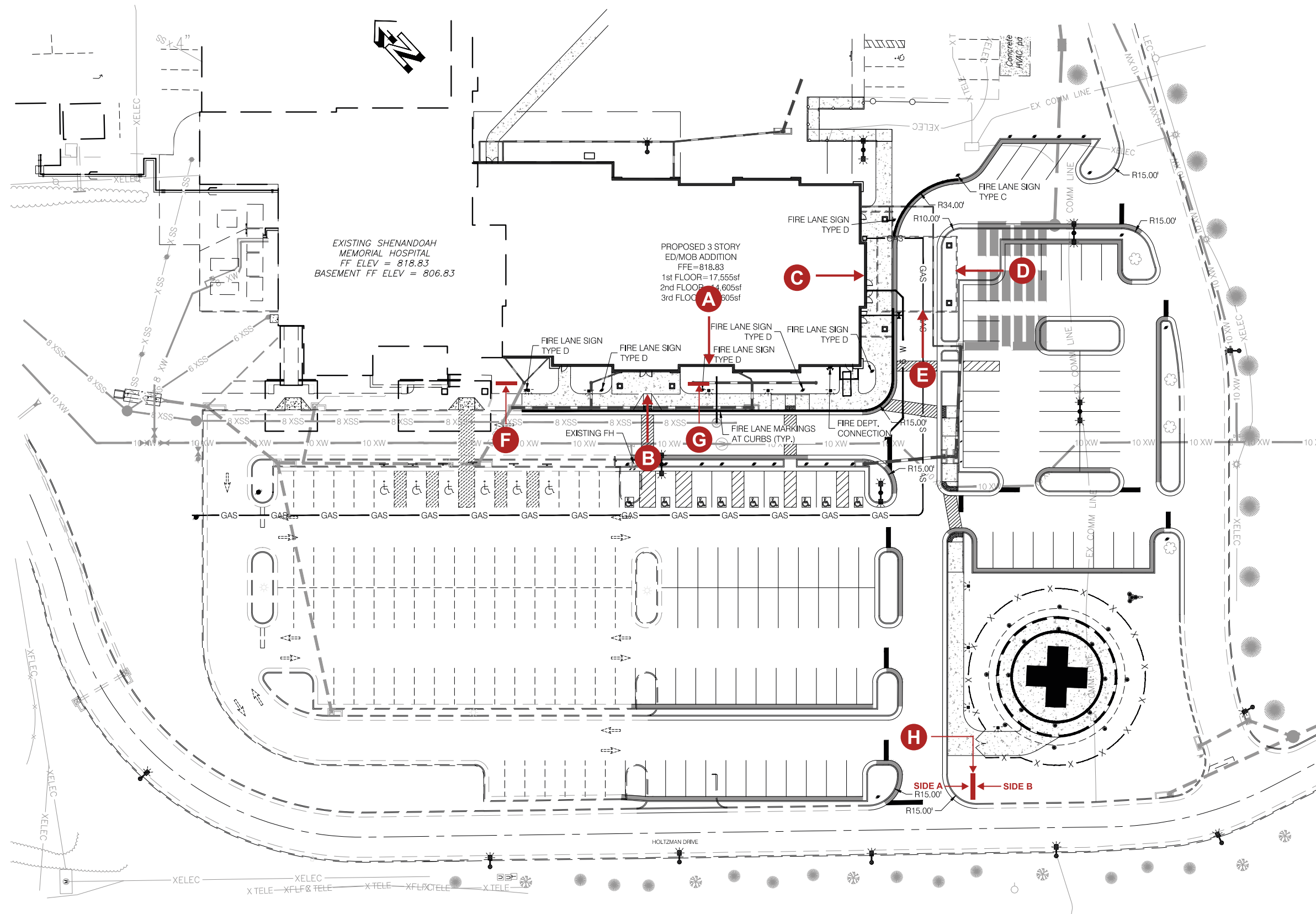


S I T E P L A N



A BUILDING LETTERS - SOUTH ELEVATION
Refer to Drawing: SMH.EDMOB.BLSE.01R

B EMERGENCY CANOPY LETTERS
Refer to Drawing: SMH.EDMOB.EBL.02

C BUILDING LETTERS - EAST ELEVATION
Refer to Drawing: SMH.EDMOB.BLEE.03R

D AMBULANCE CANOPY LETTERS
Refer to Drawing: SMH.EDMOB.ABL.04R

E AMBULANCE CANOPY LETTERS
Refer to Drawing: SMH.EDMOB.ABL.04AR

F BUILDING ENTRANCE MONUMENT SIGN
Refer to Drawing: SMH.EDMOB.BEMSA.05R

G BUILDING ENTRANCE MONUMENT SIGN
Refer to Drawing: SMH.EDMOB.BEMSB.06R

H E4 DIRECTIONAL MONUMENT SIGN
Refer to Drawing: SMH.EDMOB.E4DIR.07R



a company you can identify with

DATE

JULY 8TH, 2015

SCALE

AS INDICATED

CLIENT

VALLEY HEALTH

PROJECT

SMH - ED/MOB

LOCATION

WOODSTOCK, VA

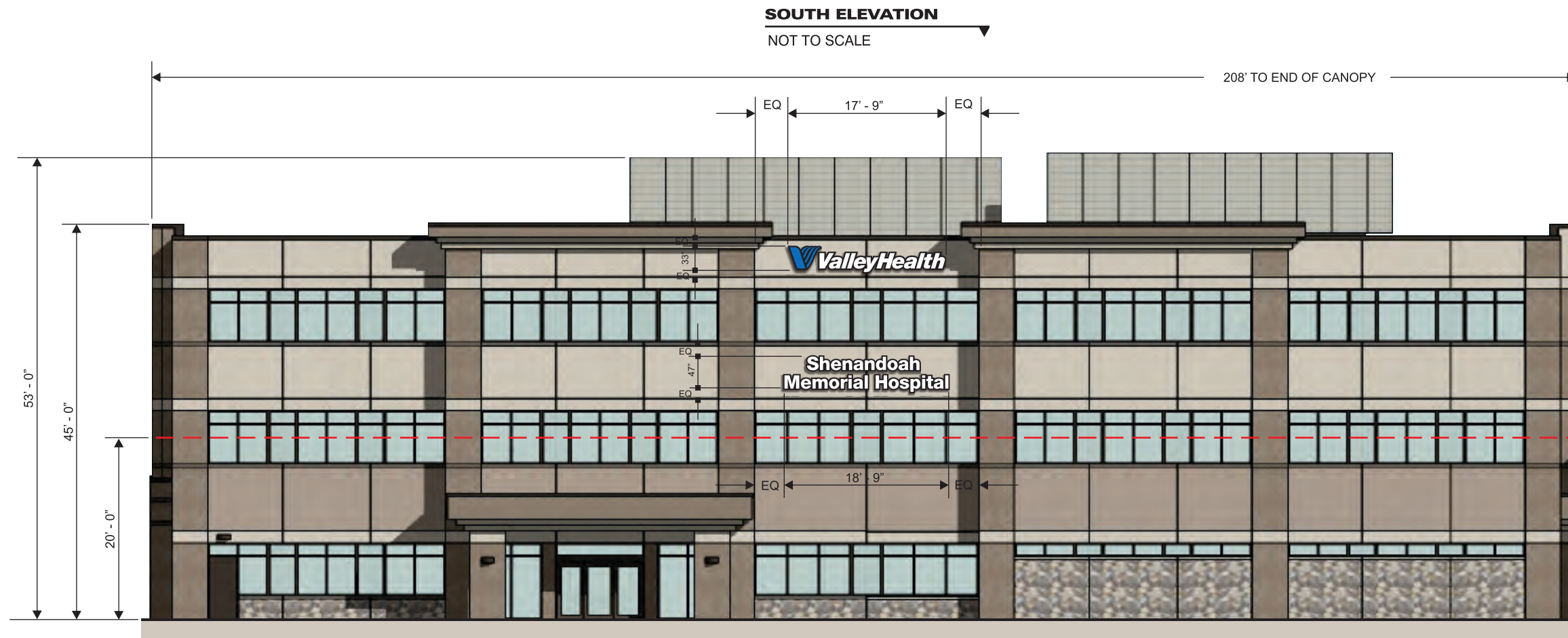
DRAWING

SMH.EDMOB.SP.008R

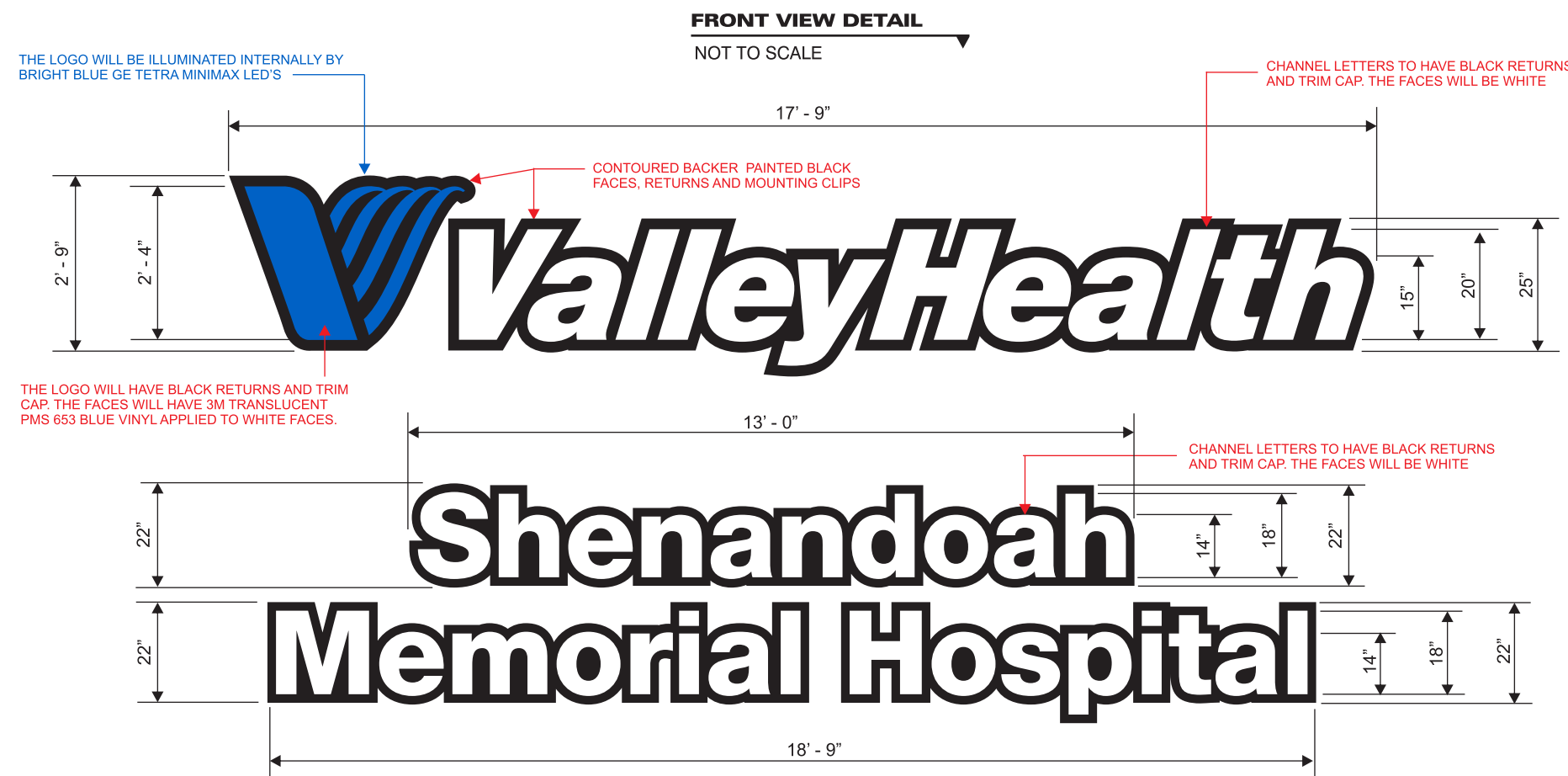
Identity America, Inc.
Professional Building
112 Spruce St. Spruce 4
Bluefield, VA 24605

Phone: 276.322.2616
Fax: 276.322.1637

identityamerica.com

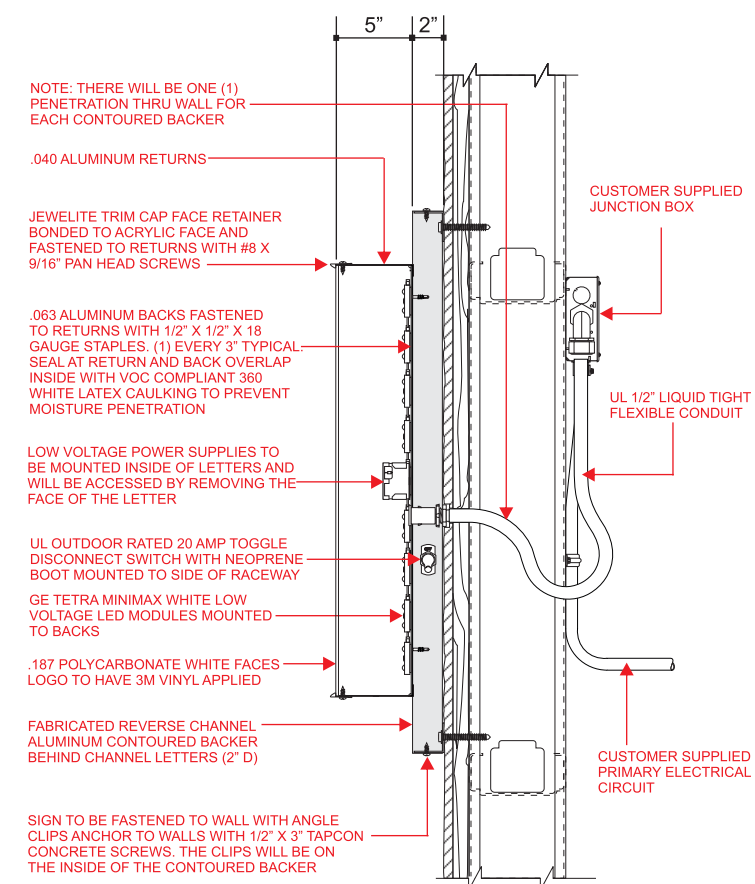


GENERAL NOTE: THE ABOVE ELEVATION IS AN ACCURATE RENDERING OF HOW THE VALLEYHEALTH LOGO & TEXT AND THE SHENANDOAH MEMORIAL HOSPITAL CHANNEL LETTERS WILL APPEAR ON THE BUILDING.



GENERAL NOTE: THE CONTOURED BACKERS WILL BE FABRICATED AS A REVERSE CHANNEL AND WILL BE ANCHORED TO THE WALL WITH ANGLE MOUNTING CLIPS. THE CLIPS WILL BE POSITIONED INWARD BEHIND THE CONTOURED BACKER. A MOUNTING PATTERN WILL BE SUPPLIED WHICH WILL SHOW ALL MOUNTING POINTS FOR THE CLIPS. THE LOW VOLTAGE POWER SUPPLIES WILL BE MOUNTED INSIDE OF THE LETTERS AND WILL BE ACCESSED BY REMOVING THE FACES OF THE LETTERS. THERE WILL BE ONE PENETRATION THRU WALL BE CONTOURED BACKER.

SECTION DETAIL
NOT TO SCALE



GENERAL NOTE:

THE VALLEYHEALTH LOGO AND TEXT WILL BE CENTERED VERTICALLY AND HORIZONTALLY IN THE UPPER BAND AS SHOWN.

THE SHENANDOAH MEMORIAL HOSPITAL LETTERS WILL BE CENTERED VERTICALLY AND HORIZONTALLY ON THE MIDDLE BAND AS SHOWN.

ELECTRICAL REQUIREMENTS:

ONE (1) 120 VOLT, 20 AMP SINGLE-PHASE CIRCUIT WILL BE REQUIRED TO POWER THESE LETTERS.

THE LETTERS WILL BE WIRED INTO THE FACILITIES ENERGY MANAGEMENT SYSTEM AND WILL TURN ON AND OFF IN CONJUNCTION WITH OTHER AREA LIGHTING AS REQUIRED.

THE CUSTOMER WILL PROVIDE THE PROPER CIRCUIT TO THE POINT ON THE WALL WHERE THE LETTERS WILL BE INSTALLED.

FINAL HOOK-UP WILL BE BY THE SIGN INSTALLER ASSISTED BY THE JOB SITE ELECTRICIAN.

SQUARE FOOTAGE TOTALS:

VALLEYHEALTH LOGO & TEXT:
2'-9" H X 17'-9" L = 48.81 SQ. FT.

SHENANDOAH:
1'-10" H X 13'-0" L = 23.79 SQ. FT.

MEMORIAL HOSPITAL:
1'-10" H X 18'-9" L = 34.31 SQ. FT.

TOTAL SQUARE FOOTAGE: 106.91 SQ. FT.



a company you can identify with

DATE

JULY 9TH, 2015

SCALE

AS INDICATED

CLIENT

VALLEY HEALTH

PROJECT

SMH - ED/MOB

LOCATION

WOODSTOCK, VA

DRAWING #

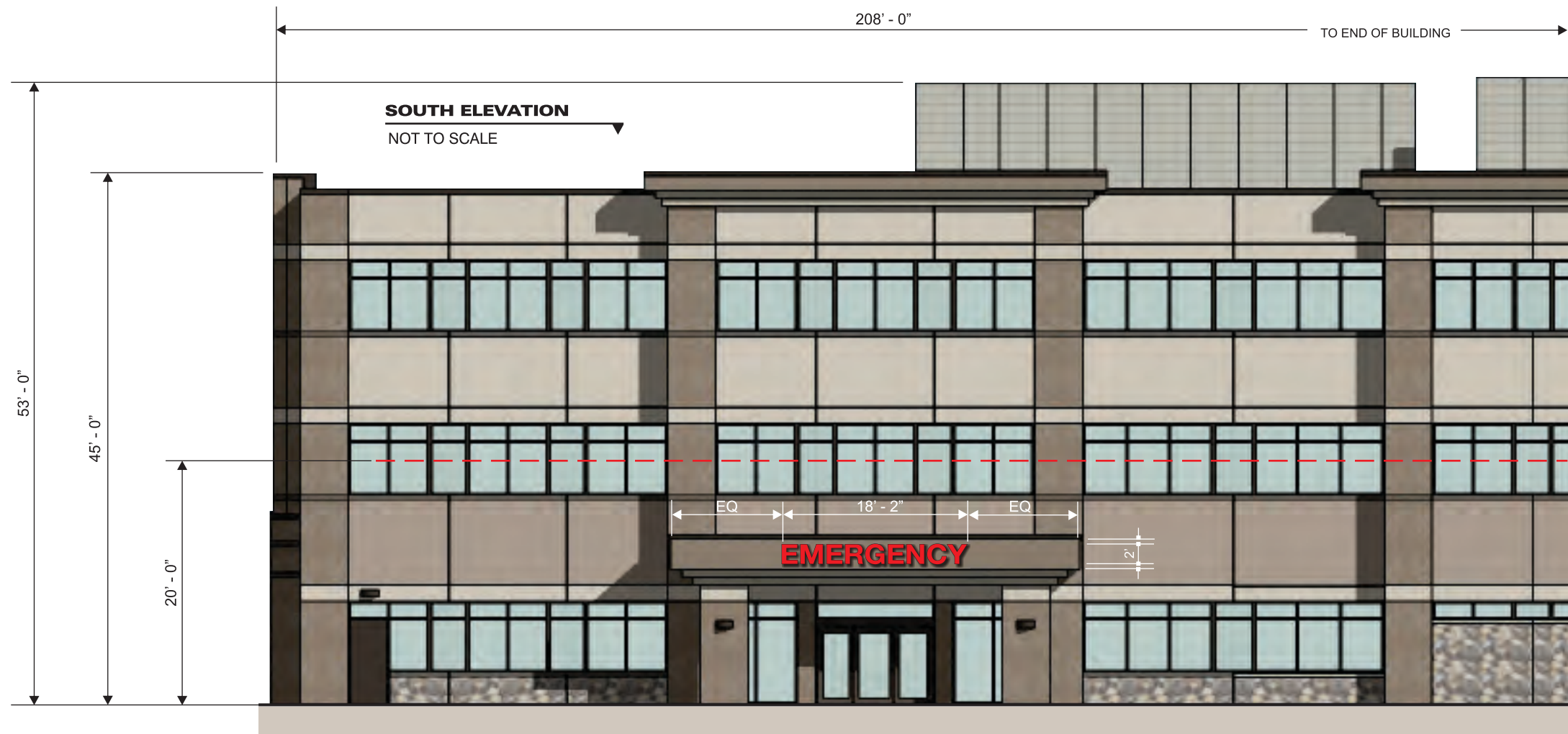
SMH.EDMOB.BLSE.01R



Identity America, Inc.
Professional Building
112 Spruce St. Spruce 4
Bluefield, VA 24605

Phone: 276.322.2616
Fax: 276.322.1637

identityamerica.com



GENERAL NOTE: THE ABOVE ELEVATION IS AN ACCURATE RENDERING OF HOW THE EMERGENCY CHANNEL LETTERS WOULD APPEAR WHEN INSTALLED ON THE CANOPY.

SQUARE FOOTAGE TOTALS:

2' - 0" H x 18' - 2" L = 36.33 SQ. FT.

FRONT VIEW DETAIL

NOT TO SCALE



GENERAL DESCRIPTION:

MANUFACTURE AND INSTALL ONE (1) SET OF ILLUMINATED CHANNEL LETTERS. THE LETTERS WILL BE MOUNTED FLUSH TO THE WALL AND WILL BE CONSTRUCTED AS FOLLOWS. THE LETTERS WILL HAVE .040 ALUMINUM RETURNS AND .063 ALUMINUM BACKS. THE INSIDE OF THE LETTERS WILL BE PAINTED BRIGHT REFLECTIVE WHITE AND THE EXTERIOR WILL BE PAINTED BLACK. ALL ALUMINUM SURFACES WILL BE PRIMED WITH AN EPOXY PRIMER AND THEN PAINTED WITH AKZO-NOBEL POLYURETHANE PAINT. THE LETTERS WILL BE LIGHTED INTERNALLY WITH GE TETRA MINIMAX BRIGHT RED LED'S. THE FACES WILL BE .187" POLYCARBONATE WITH 3M TRANSLUCENT POPPY RED VINYL APPLIED FIRST SURFACE. THE FACES OF THE LETTERS WILL BE BORDERED WITH 1" BLACK TRIM CAP. THE LETTERS WILL MEET U. L. APPROVAL AND WILL BEAR THE REQUIRED LABELS. THERE WILL BE ONE PENETRATION THRU THE WALL PER LETTER FOR ELECTRICAL WIRING. THE LOW VOLTAGE POWER SUPPLIES WILL BE MOUNTED BEHIND THE WALL AND WILL BE HOUSED IN U. L. APPROVED TRANSFORMER BOXES.

NOTE: FOR THE ACTUAL LAYOUT OF THE LED'S PLEASE REFER TO THE ATTACHED GE LAYOUT. THE LAYOUT SHOWS THE ACCURATE RECOMMENDED LAYOUT WHICH ALSO INCLUDES THE TYPE, NUMBER OF LED'S, TYPE & NUMBER OF POWER SUPPLIES AND THE TOTAL WATTAGE & AMPERAGE.

IT WILL BE THE RESPONSIBILITY OF THE SIGN VENDOR TO OBTAIN ALL NECESSARY PERMITS AND OR LICENSES REQUIRED TO INSTALL THESE LETTERS.

GENERAL NOTE:

THE CHANNEL LETTERS WILL BE MOUNTED FLUSH TO THE FACADE OF THE CANOPY AND WILL BE ALIGNED AS FOLLOWS.

THE LETTERS WILL BE CENTERED HORIZONTALLY AND VERTICALLY ON THE FLAT BAND BELOW THE TRIM.

ELECTRICAL REQUIREMENTS:

ONE (1) 120 VOLT, 20 AMP SINGLE-PHASE CIRCUIT WILL BE REQUIRED TO POWER THESE LETTERS.

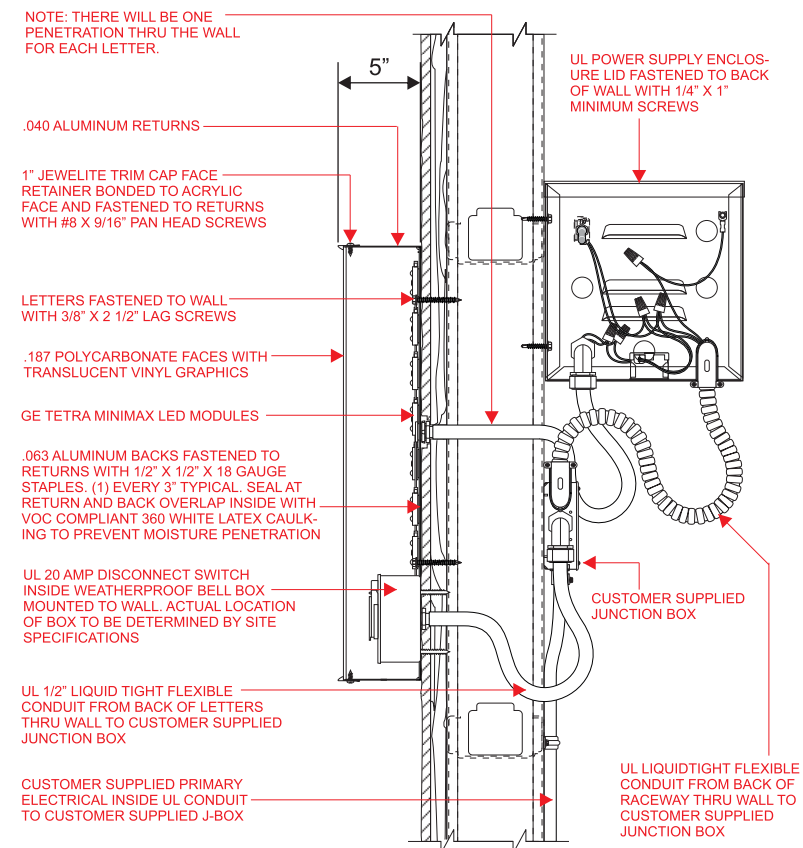
THE LETTERS WILL BE WIRED INTO THE FACILITIES ENERGY MANAGEMENT SYSTEM AND WILL TURN ON AND OFF IN CONJUNCTION WITH OTHER AREA LIGHTING AS REQUIRED.

THE CUSTOMER WILL PROVIDE THE PROPER CIRCUIT TO THE POINT ON THE WALL WHERE THE LETTERS WILL BE INSTALLED.

FINAL HOOK-UP WILL BE BY THE SIGN INSTALLER ASSISTED BY THE JOB SITE ELECTRICIAN.

SECTION DETAIL

NOT TO SCALE



a company you can identify with

DATE

JUNE 19TH, 2015

SCALE

AS INDICATED

CLIENT

VALLEY HEALTH

PROJECT

SMH - ED/MOB

LOCATION

WOODSTOCK, VA

DRAWING

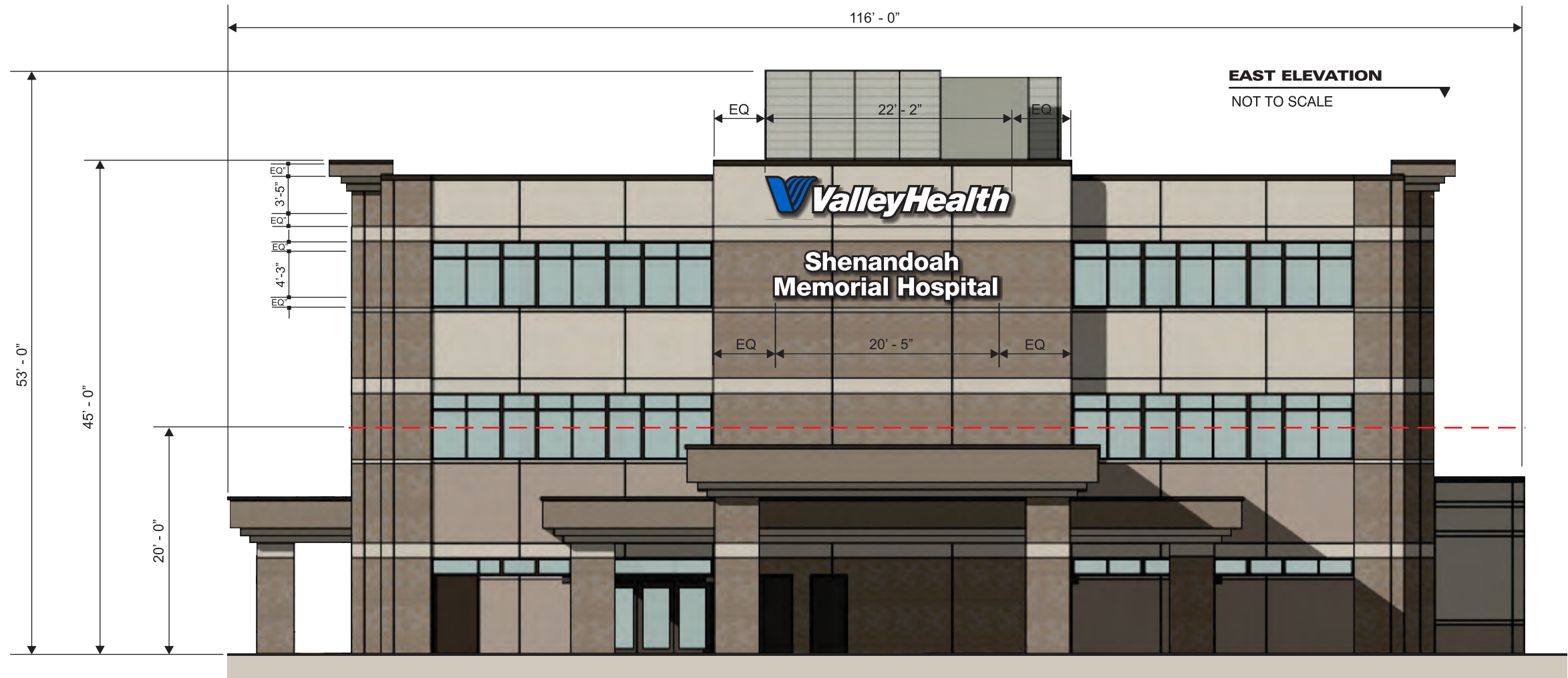
SMH.EDMOB.EBL.02

B

Identity America, Inc.
Professional Building
112 Spruce St. Spruce 4
Bluefield, VA 24605

Phone: 276.322.2616
Fax: 276.322.1637

identityamerica.com



GENERAL NOTE:

THE VALLEYHEALTH LOGO AND TEXT WILL BE CENTERED VERTICALLY AND HORIZONTALLY IN THE UPPER BAND AS SHOWN.

ELECTRICAL REQUIREMENTS:

ONE (1) 120 VOLT, 20 AMP SINGLE-PHASE CIRCUIT WILL BE REQUIRED TO POWER THESE LETTERS.

THE LETTERS WILL BE WIRED INTO THE FACILITIES ENERGY MANAGEMENT SYSTEM AND WILL TURN ON AND OFF IN CONJUNCTION WITH OTHER AREA LIGHTING AS REQUIRED.

THE CUSTOMER WILL PROVIDE THE PROPER CIRCUIT TO THE POINT ON THE WALL WHERE THE LETTERS WILL BE INSTALLED.

FINAL HOOK-UP WILL BE BY THE SIGN INSTALLER ASSISTED BY THE JOB SITE ELECTRICIAN.

SQUARE FOOTAGE TOTALS:

VALLEYHEALTH LOGO & TEXT:
3'-5" H X 22'-2" L = 75.72 SQ. FT.

SHENANDOAH:
2'-0" H X 14'-1" L = 28.17 SQ. FT.

MEMORIAL HOSPITAL:
2'-0" H X 20'-5" L = 40.83 SQ. FT.

TOTAL SQUARE FOOTAGE: 144.72 SQ. FT.

GENERAL NOTE: THE ABOVE ELEVATION IS AN ACCURATE RENDERING OF HOW THE VALLEYHEALTH LOGO & TEXT AND THE SHENANDOAH MEMORIAL HOSPITAL CHANNEL LETTERS WILL APPEAR ON THE BUILDING.



THE LOGO WILL BE ILLUMINATED INTERNALLY BY BRIGHT BLUE GE TETRA MINIMAX LED'S

THE LOGO WILL HAVE BLACK RETURNS AND TRIM CAP. THE FACES WILL HAVE 3M TRANSLUCENT PMS 653 BLUE VINYL APPLIED TO WHITE FACES.

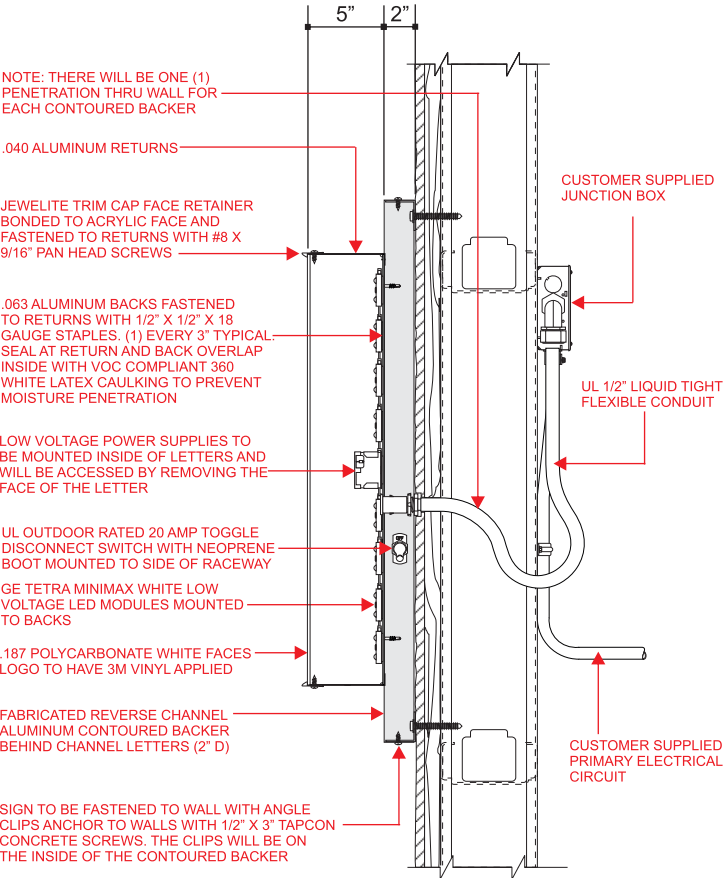
CHANNEL LETTERS TO HAVE BLACK RETURNS AND TRIM CAP. THE FACES WILL BE WHITE

CHANNEL LETTERS TO HAVE BLACK RETURNS AND TRIM CAP. THE FACES WILL BE WHITE

GENERAL NOTE: THE CONTOURED BACKERS WILL BE FABRICATED AS A REVERSE CHANNEL AND WILL BE ANCHORED TO THE WALL WITH ANGLE MOUNTING CLIPS. THE CLIPS WILL BE POSITIONED INWARD BEHIND THE CONTOURED BACKER. A MOUNTING PATTERN WILL BE SUPPLIED WHICH WILL SHOW ALL MOUNTING POINTS FOR THE CLIPS. THE LOW VOLTAGE POWER SUPPLIES WILL BE MOUNTED INSIDE OF THE LETTERS AND WILL BE ACCESSED BY REMOVING THE FACES OF THE LETTERS. THERE WILL BE ONE PENETRATION THRU WALL BE CONTOURED BACKER.

SECTION DETAIL

NOT TO SCALE



NOTE: THERE WILL BE ONE (1) PENETRATION THRU WALL FOR EACH CONTOURED BACKER

.040 ALUMINUM RETURNS

JEWELITE TRIM CAP FACE RETAINER BONDED TO ACRYLIC FACE AND FASTENED TO RETURNS WITH #8 X 9/16" PAN HEAD SCREWS

.063 ALUMINUM BACKS FASTENED TO RETURNS WITH 1/2" X 1/2" X 18 GAUGE STAPLES. (1) EVERY 3" TYPICAL. SEAL AT RETURN AND BACK OVERLAP INSIDE WITH VOC COMPLIANT 360 WHITE LATEX CAULKING TO PREVENT MOISTURE PENETRATION

LOW VOLTAGE POWER SUPPLIES TO BE MOUNTED INSIDE OF LETTERS AND WILL BE ACCESSED BY REMOVING THE FACE OF THE LETTER

UL OUTDOOR RATED 20 AMP TOGGLE DISCONNECT SWITCH WITH NEOPRENE BOOT MOUNTED TO SIDE OF RACEWAY

GE TETRA MINIMAX WHITE LOW VOLTAGE LED MODULES MOUNTED TO BACKS

.187 POLYCARBONATE WHITE FACES LOGO TO HAVE 3M VINYL APPLIED

FABRICATED REVERSE CHANNEL ALUMINUM CONTOURED BACKER BEHIND CHANNEL LETTERS (2" D)

SIGN TO BE FASTENED TO WALL WITH ANGLE CLIPS ANCHOR TO WALLS WITH 1/2" X 3" TAPCON CONCRETE SCREWS. THE CLIPS WILL BE ON THE INSIDE OF THE CONTOURED BACKER

CUSTOMER SUPPLIED JUNCTION BOX

UL 1/2" LIQUID TIGHT FLEXIBLE CONDUIT

CUSTOMER SUPPLIED PRIMARY ELECTRICAL CIRCUIT



a company you can identify with

DATE

JULY 9TH, 2015

SCALE

AS INDICATED

CLIENT

VALLEY HEALTH

PROJECT

SMH - ED/MOB

LOCATION

WOODSTOCK, VA

DRAWING #

SMH.EDMOB.BLEE.03R

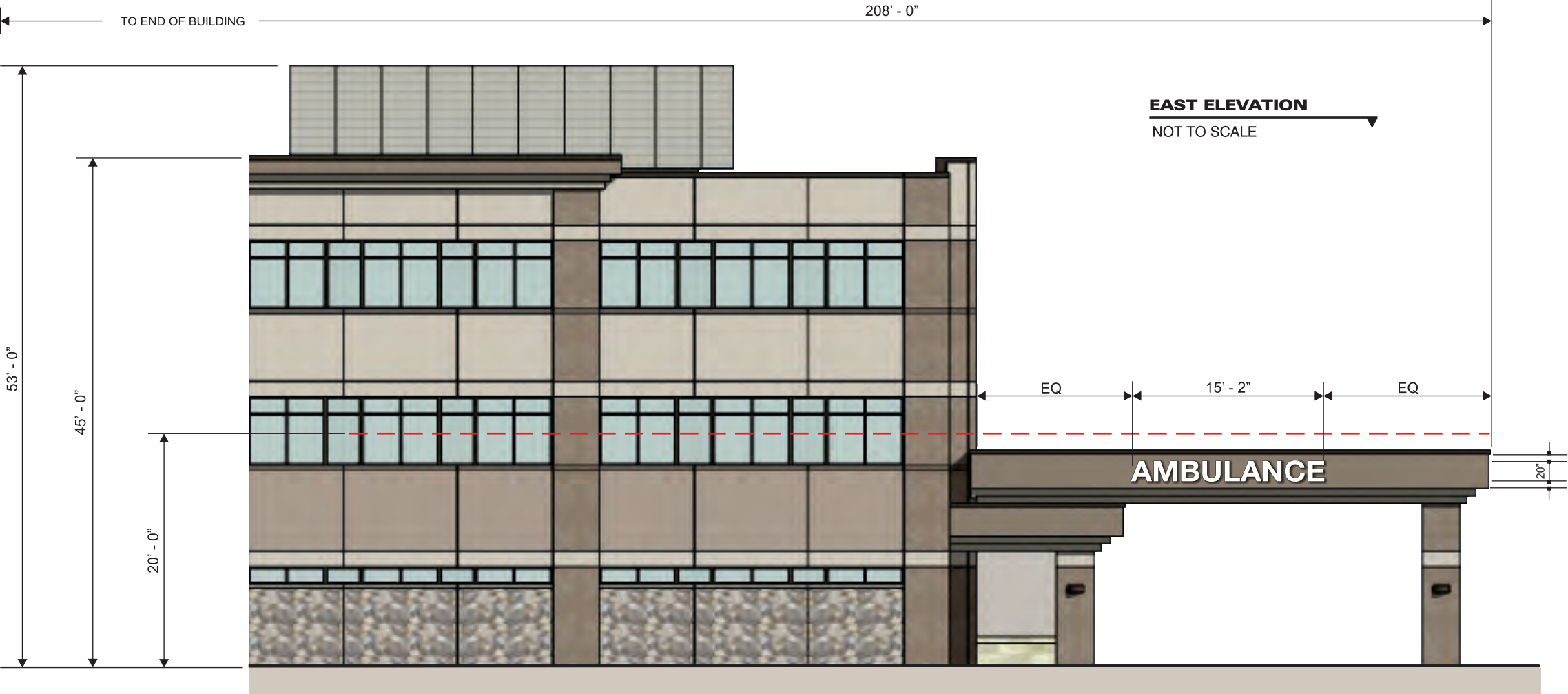


Identity America, Inc.

Professional Building
112 Spruce St. Spruce 4
Bluefield, VA 24605

Phone: 276.322.2616
Fax: 276.322.1637

identityamerica.com



GENERAL NOTE:

THE CHANNEL LETTERS WILL BE MOUNTED FLUSH TO THE FACADE OF THE CANOPY AND WILL BE ALIGNED AS FOLLOWS.

THE LETTERS WILL BE CENTERED HORIZONTALLY AND VERTICALLY ON THE FLAT BAND BELOW THE TRIM.

ELECTRICAL REQUIREMENTS:

ONE (1) 120 VOLT, 20 AMP SINGLE-PHASE CIRCUIT WILL BE REQUIRED TO POWER THESE LETTERS.

THE LETTERS WILL BE WIRED INTO THE FACILITIES ENERGY MANAGEMENT SYSTEM AND WILL TURN ON AND OFF IN CONJUNCTION WITH OTHER AREA LIGHTING AS REQUIRED.

THE CUSTOMER WILL PROVIDE THE PROPER CIRCUIT TO THE POINT ON THE WALL WHERE THE LETTERS WILL BE INSTALLED.

FINAL HOOK-UP WILL BE BY THE SIGN INSTALLER ASSISTED BY THE JOB SITE ELECTRICIAN.

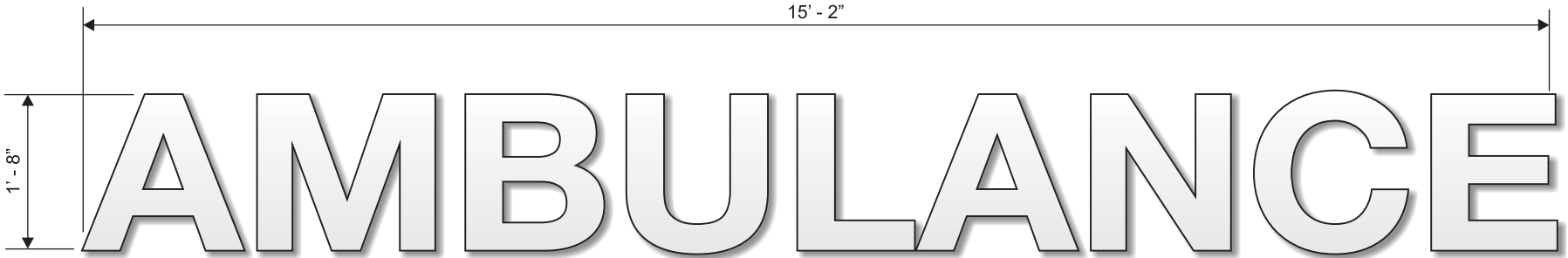
GENERAL NOTE: THE ABOVE ELEVATION IS AN ACCURATE RENDERING OF HOW THE AMBULANCE CHANNEL LETTERS WOULD APPEAR WHEN INSTALLED ON THE CANOPY.

SQUARE FOOTAGE TOTALS:

1' - 8" H x 15' - 2" L = 25.33 SQ. FT.

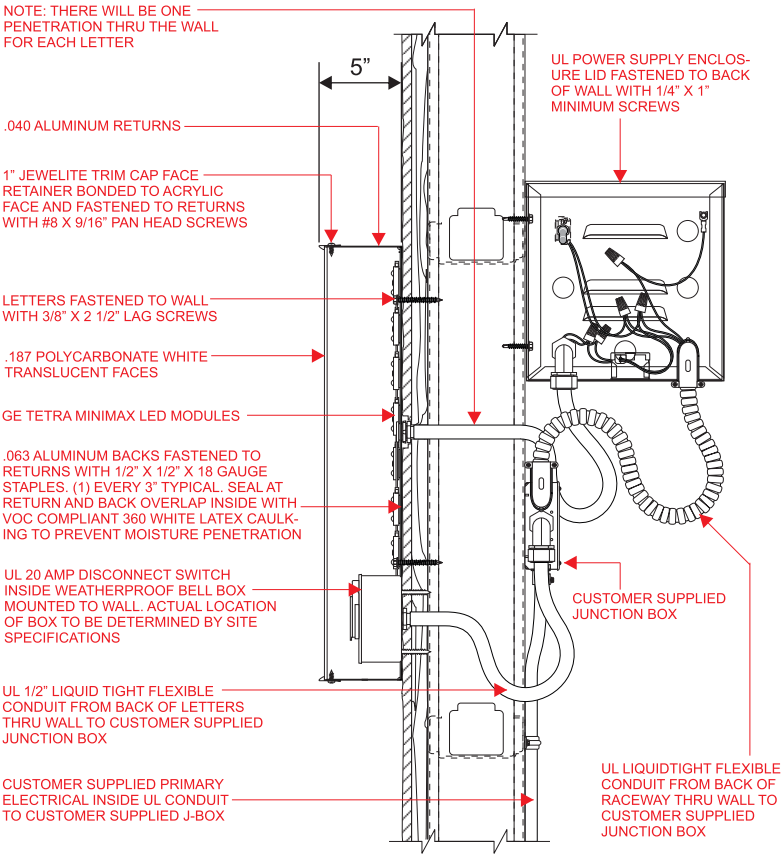
FRONT VIEW DETAIL

NOT TO SCALE



SECTION DETAIL

NOT TO SCALE



GENERAL DESCRIPTION:

MANUFACTURE AND INSTALL ONE (1) SET OF ILLUMINATED CHANNEL LETTERS. THE LETTERS WILL BE MOUNTED FLUSH TO THE WALL AND WILL BE CONSTRUCTED AS FOLLOWS. THE LETTERS WILL HAVE .040 ALUMINUM RETURNS AND .063 ALUMINUM BACKS. THE INSIDE OF THE LETTERS WILL BE PAINTED BRIGHT REFLECTIVE WHITE AND THE EXTERIOR WILL BE PAINTED BLACK. ALL ALUMINUM SURFACES WILL BE PRIMED WITH AN EPOXY PRIMER AND THEN PAINTED WITH AKZO-NOBEL POLYURETHANE PAINT. THE LETTERS WILL BE LIGHTED INTERNALLY WITH GE TETRA MINIMAX BRIGHT WHITE LED'S. THE FACES WILL BE CONSTRUCTED OF .187" WHITE TRANSLUCENT POLYCARBONATE. THE FACES OF THE LETTERS WILL BE BORDERED WITH 1" BLACK TRIM CAP. THE LETTERS WILL MEET U. L. APPROVAL AND WILL BEAR THE REQUIRED LABELS. THERE WILL BE ONE PENETRATION THRU THE WALL PER EACH LETTER FOR ELECTRICAL WIRING. THE LOW VOLTAGE POWER SUPPLIES WILL BE MOUNTED BEHIND THE WALL AND WILL BE HOUSED IN U. L. APPROVED TRANSFORMER BOXES.

NOTE: FOR THE ACTUAL LAYOUT OF THE LED'S PLEASE REFER TO THE ATTACHED GE LAYOUT. THE LAYOUT SHOWS THE ACCURATE RECOMMENDED LAYOUT WHICH ALSO INCLUDES THE TYPE, NUMBER OF LED'S, TYPE & NUMBER OF POWER SUPPLIES AND THE TOTAL WATTAGE & AMPERAGE.

IT WILL BE THE RESPONSIBILITY OF THE SIGN VENDOR TO OBTAIN ALL NECESSARY PERMITS AND OR LICENSES REQUIRED TO INSTALL THESE LETTERS.



a company you can identify with

DATE

JULY 4TH, 2015

SCALE

AS INDICATED

CLIENT

VALLEY HEALTH

PROJECT

SMH - ED/MOB

LOCATION

WOODSTOCK, VA

DRAWING #

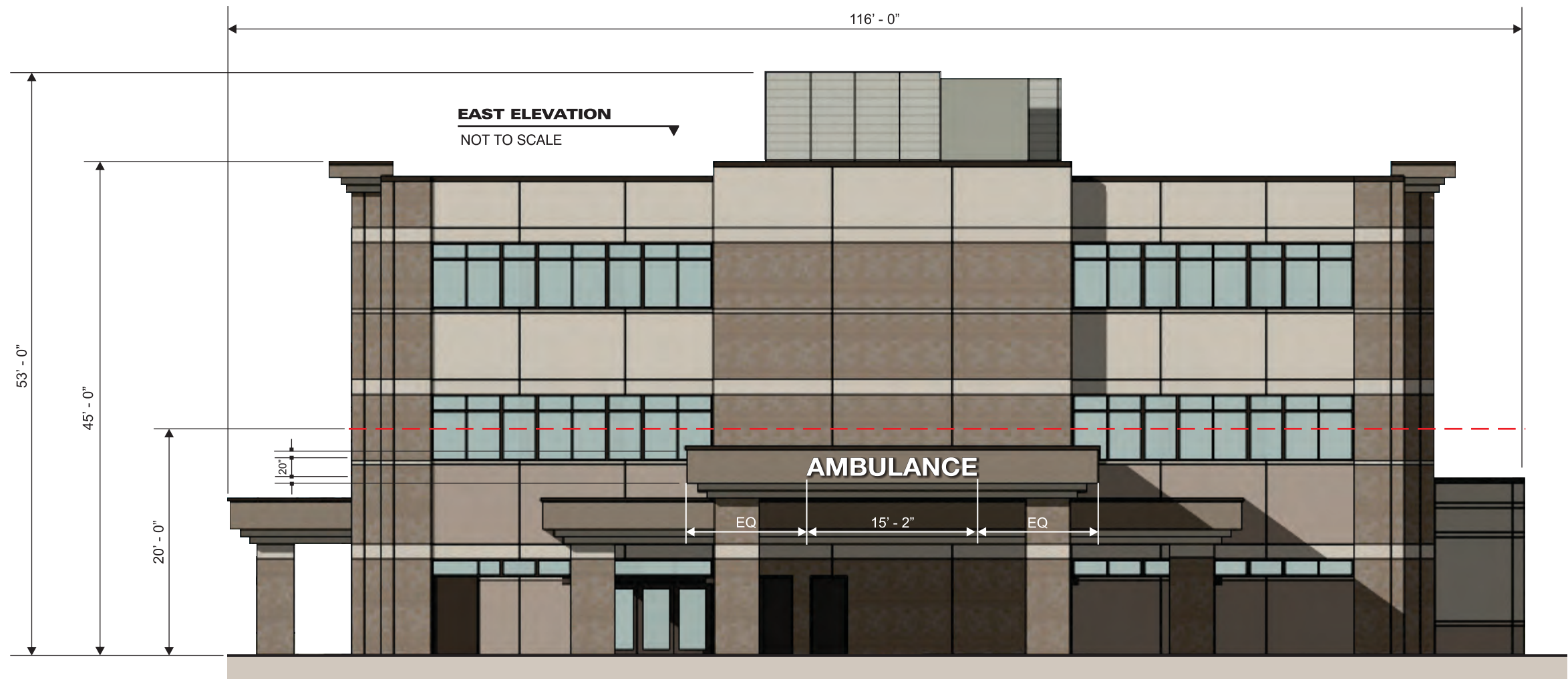
SMH.EDMOB.ABL.04AR



Identity America, Inc.
Professional Building
112 Spruce St. Spruce 4
Bluefield, VA 24605

Phone: 276.322.2616
Fax: 276.322.1637

identityamerica.com



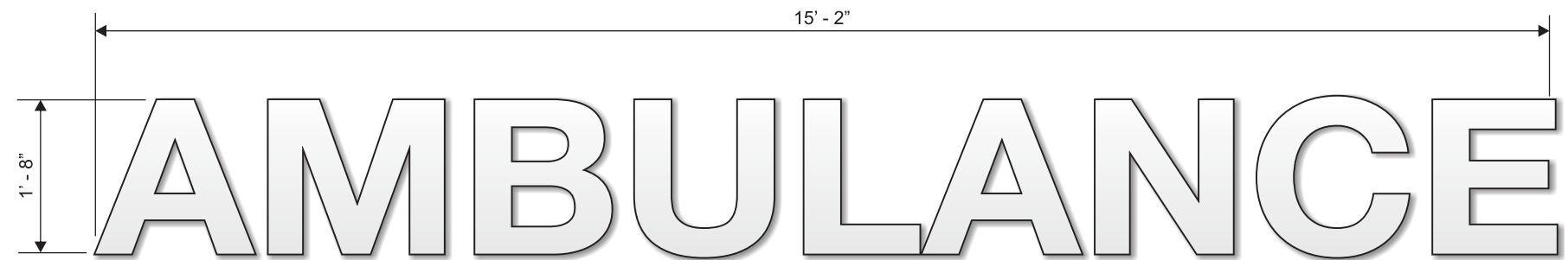
GENERAL NOTE: THE ABOVE ELEVATION IS AN ACCURATE RENDERING OF HOW THE AMBULANCE CHANNEL LETTERS WOULD APPEAR WHEN INSTALLED ON THE CANOPY.

SQUARE FOOTAGE TOTALS:

1' - 8" H x 15' - 2" L = 25.33 SQ. FT.

FRONT VIEW DETAIL

NOT TO SCALE



GENERAL DESCRIPTION:

MANUFACTURE AND INSTALL ONE (1) SET OF ILLUMINATED CHANNEL LETTERS. THE LETTERS WILL BE MOUNTED FLUSH TO THE WALL AND WILL BE CONSTRUCTED AS FOLLOWS. THE LETTERS WILL HAVE .040 ALUMINUM RETURNS AND .063 ALUMINUM BACKS. THE INSIDE OF THE LETTERS WILL BE PAINTED BRIGHT REFLECTIVE WHITE AND THE EXTERIOR WILL BE PAINTED BLACK. ALL ALUMINUM SURFACES WILL BE PRIMED WITH AN EPOXY PRIMER AND THEN PAINTED WITH AKZO-NOBEL POLYURETHANE PAINT. THE LETTERS WILL BE LIGHTED INTERNALLY WITH GE TETRA MINIMAX BRIGHT WHITE LED'S. THE FACES WILL BE CONSTRUCTED OF .187" WHITE TRANSLUCENT POLYCARBONATE. THE FACES OF THE LETTERS WILL BE BORDERED WITH 1" BLACK TRIM CAP. THE LETTERS WILL MEET U. L. APPROVAL AND WILL BEAR THE REQUIRED LABELS. THERE WILL BE ONE PENETRATION THRU THE WALL PER LETTER FOR ELECTRICAL WIRING. THE LOW VOLTAGE POWER SUPPLIES WILL BE MOUNTED BEHIND THE WALL AND WILL BE HOUSED IN U. L. APPROVED TRANSFORMER BOXES.

NOTE: FOR THE ACTUAL LAYOUT OF THE LED'S PLEASE REFER TO THE ATTACHED GE LAYOUT. THE LAYOUT SHOWS THE ACCURATE RECOMMENDED LAYOUT WHICH ALSO INCLUDES THE TYPE, NUMBER OF LED'S, TYPE & NUMBER OF POWER SUPPLIES AND THE TOTAL WATTAGE & AMPERAGE.

IT WILL BE THE RESPONSIBILITY OF THE SIGN VENDOR TO OBTAIN ALL NECESSARY PERMITS AND OR LICENSES REQUIRED TO INSTALL THESE LETTERS.

GENERAL NOTE:

THE CHANNEL LETTERS WILL BE MOUNTED FLUSH TO THE FACADE OF THE CANOPY AND WILL BE ALIGNED AS FOLLOWS.

THE LETTERS WILL BE CENTERED HORIZONTALLY AND VERTICALLY ON THE FLAT BAND BELOW THE TRIM.

ELECTRICAL REQUIREMENTS:

ONE (1) 120 VOLT, 20 AMP SINGLE-PHASE CIRCUIT WILL BE REQUIRED TO POWER THESE LETTERS.

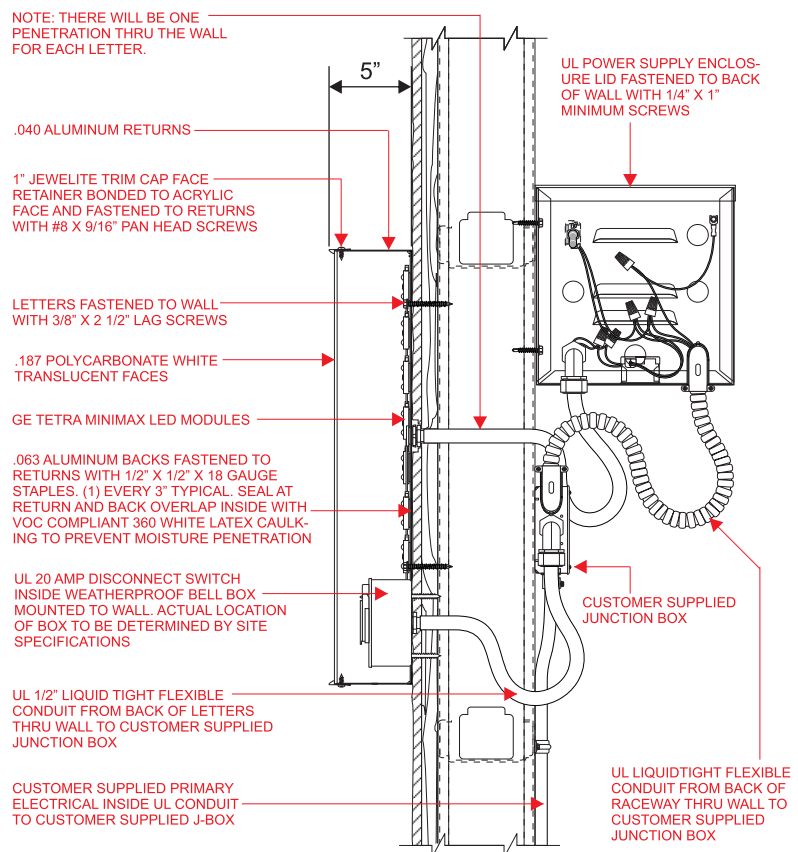
THE LETTERS WILL BE WIRED INTO THE FACILITIES ENERGY MANAGEMENT SYSTEM AND WILL TURN ON AND OFF IN CONJUNCTION WITH OTHER AREA LIGHTING AS REQUIRED.

THE CUSTOMER WILL PROVIDE THE PROPER CIRCUIT TO THE POINT ON THE WALL WHERE THE LETTERS WILL BE INSTALLED.

FINAL HOOK-UP WILL BE BY THE SIGN INSTALLER ASSISTED BY THE JOB SITE ELECTRICIAN.

SECTION DETAIL

NOT TO SCALE



a company you can identify with

DATE

JULY 4TH, 2015

SCALE

AS INDICATED

CLIENT

VALLEY HEALTH

PROJECT

SMH - ED/MOB

LOCATION

WOODSTOCK, VA

DRAWING

SMH.EDMOB.ABL.04R



Identity America, Inc.

Professional Building
112 Spruce St. Spruce 4
Bluefield, VA 24605

Phone: 276.322.2616

Fax: 276.322.1637

identityamerica.com

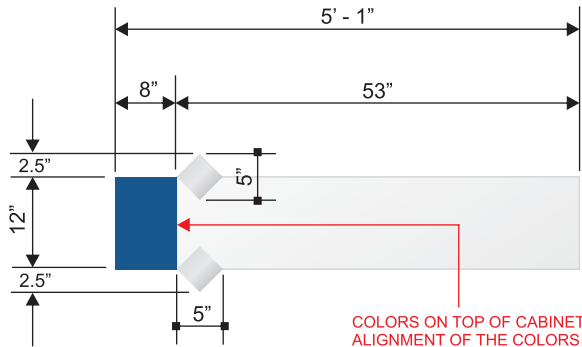
COLOR SCHEME:

- WHITE
AKZO-NOBEL PAINT
- PMS 653 BLUE
AKZO-NOBEL PAINT
AVERY COBALT BLUE
TRANSLUCENT VINYL
- BLACK
AKZO-NOBEL PAINT
3M OPAQUE VINYL
- SILVER
ANODIZED ALUMINUM

UPON ACCEPTANCE A FULL SET OF COLOR
SAMPLES WILL BE PROVIDED FOR APPROVAL

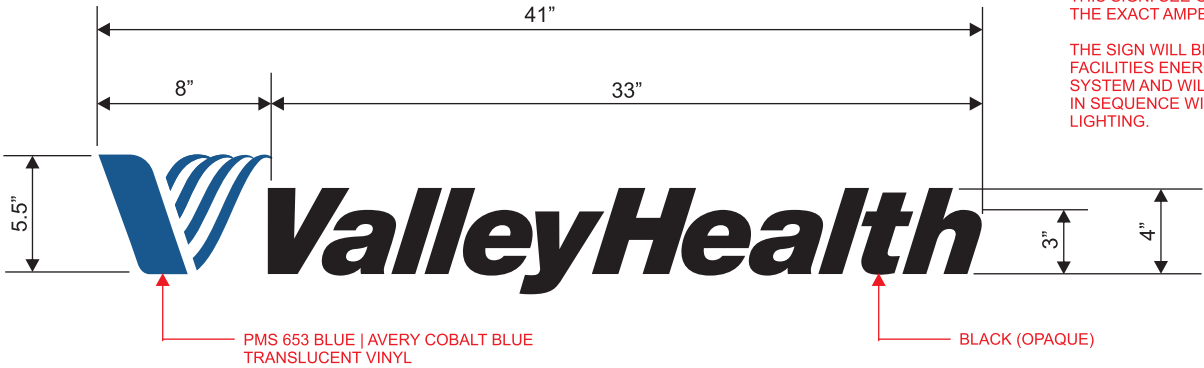
TOP VIEW DETAIL

NOT TO SCALE



LOGO DETAIL

NOT TO SCALE



ELECTRICAL REQUIREMENTS:

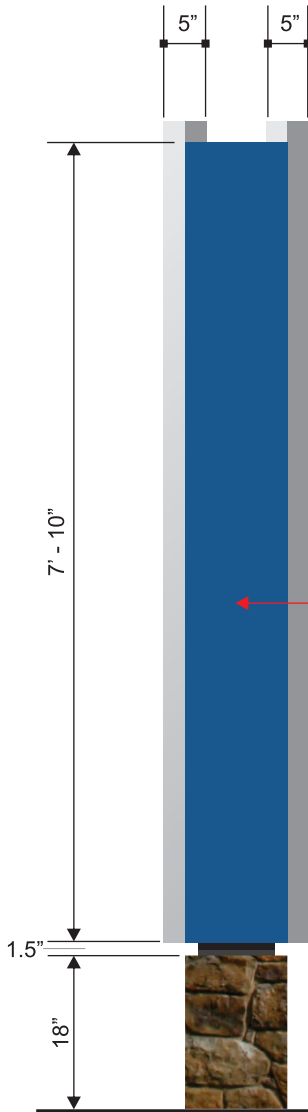
ONE (1) 120 VOLT, SINGLE - PHASE
CIRCUIT WILL BE NEEDED TO POWER
THIS SIGN. SEE GE LED LAYOUT FOR
THE EXACT AMPERAGE.

THE SIGN WILL BE WIRED INTO THE
FACILITIES ENERGY MANAGEMENT
SYSTEM AND WILL TURN ON AND OFF
IN SEQUENCE WITH OTHER AREA
LIGHTING.

GENERAL DESCRIPTION: MANUFACTURE AND INSTALL ONE (1) SINGLE-FACED MONUMENT SIGN. THE SIGN WILL HAVE AN ALL ALUMINUM INTERNAL FRAME. THE CABINET, FACES AND INSET REVEALS WILL BE CONSTRUCTED OF ALUMINUM. THE HEADER PANEL WILL HAVE ROUTED LOGO AND TEXT WITH 1/2" THICK PUSH THRU CLEAR ACRYLIC WITH 3M VINYL APPLIED FIRST SURFACE. THE SUBHEADING TEXT PANELS WILL BE ALUMINUM WITH ROUTED TEXT WITH 1/2" THICK PUSH THRU CLEAR ACRYLIC WITH OPAQUE BLACK VINYL APPLIED FIRST SURFACE. INTERNAL ILLUMINATION BY GE TETRA MAX WHITE LED'S (SEE GE LED LAYOUT). ALL ALUMINUM SURFACES WILL BE PRIMED WITH AN EPOXY PRIMER AND THEN PAINTED WITH AKZO-NOBEL POLYURETHANE PAINT. THE VERTICAL BLUE BAR WILL BE LIGHTED INTERNALLY BY GE TETRA BRIGHT BLUE LED'S (SEE GE LAYOUT). THE FRONT, BACK AND LEFT END OF THE VERTICAL BLUE BAR WILL LIGHT AND WILL BE CONSTRUCTED OF CLEAR LEXAN WITH 90 DEGREE BENT EDGES. THE LEXAN BAR WILL HAVE TRANSLUCENT VINYL TO MATCH PMS 653 BLUE APPLIED FIRST SURFACE. THE SIGN WILL BE INSTALLED ON A SINGLE-STEEL POST WHICH WILL BE SET IN CONCRETE (SEE ATTACHED ENGINEERING). THE SIGN WILL MEET U. L. APPROVAL AND WILL BEAR THE REQUIRED LABELS. THE SIGN WILL HAVE A DECORATIVE STONE BASE WHICH WILL BE INCLUDED BY THE SIGN MANUFACTURER.

L. SIDE VIEW DETAIL

NOT TO SCALE



THE TOP AND BOTTOM OF
THE VERTICAL BLUE BAR
WILL BE ALUMINUM AND
WILL HAVE A RETAINER TO
HOLD THE LEXAN IN PLACE

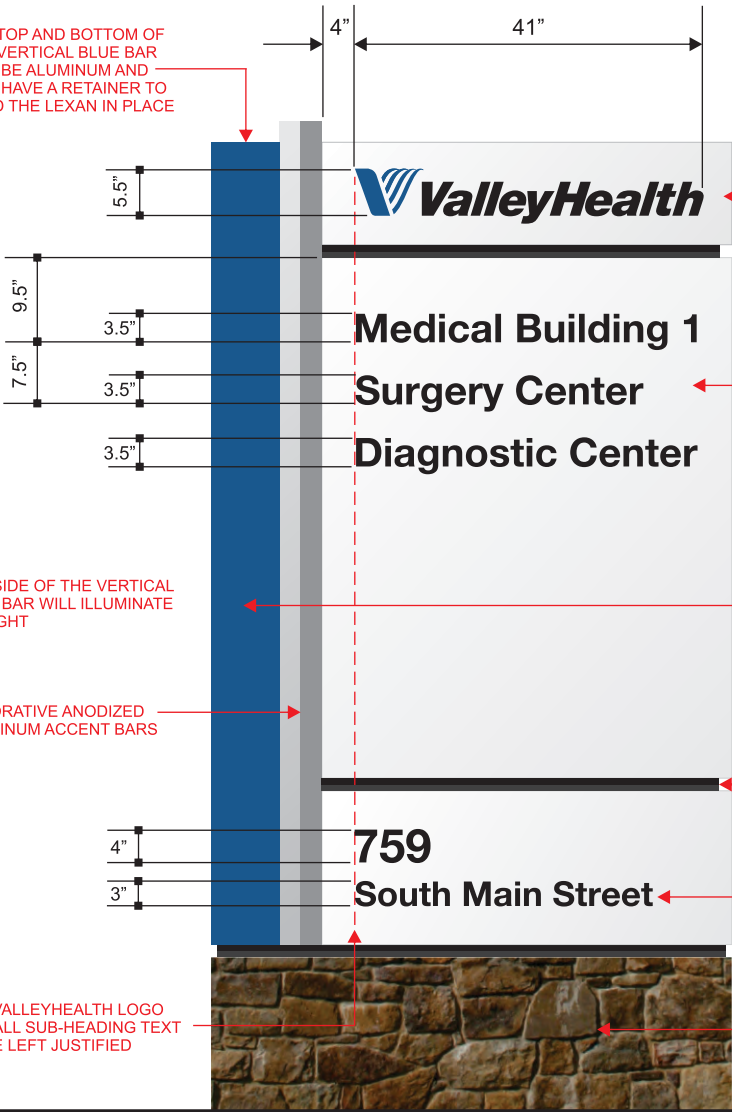
THE SIDE OF THE VERTICAL
BLUE BAR WILL ILLUMINATE
AT NIGHT

DECORATIVE ANODIZED
ALUMINUM ACCENT BARS

THE VALLEYHEALTH LOGO
AND ALL SUB-HEADING TEXT
TO BE LEFT JUSTIFIED

SIDE A DETAIL

NOT TO SCALE



HEADER PANELS TO BE ALUMINUM WITH
ROUTED LOGO & TEXT WITH PUSH THRU
1/2" ACRYLIC. THE EDGES WILL BE CLEAR.
THE LOGO WILL HAVE PMS 653 BLUE
TRANSLUCENT VINYL APPLIED TO THE
1ST SURFACE. THE TEXT WILL HAVE BLACK
OPAQUE VINYL APPLIED 1ST SURFACE.

SUB-HEADING TEXT PANEL TO BE ALUMINUM
WITH ROUTED TEXT WITH PUSH THRU 1/2"
ACRYLIC. THE EDGES WILL BE CLEAR. THE
TEXT WILL HAVE BLACK OPAQUE VINYL
APPLIED 1ST SURFACE. THIS FACE WILL BE
A ONE PIECE FACE WITH NO SEAMS.

THE VERTICAL BLUE BAR WILL BE FLAT LEXAN
WITH 90 DEGREE BENDS ON THE EDGES. THE
VERTICAL BAR WILL HAVE TRANSLUCENT VINYL
APPLIED FIRST SURFACE TO MATCH PMS 653
BLUE. THE VERTICAL BAR WILL BE ILLUMINATED
INTERNALLY BY BRIGHT BLUE GE LED LIGHTING.
THE FRONT, LEFT SIDE AND BACK WILL LIGHT AT
NIGHT.

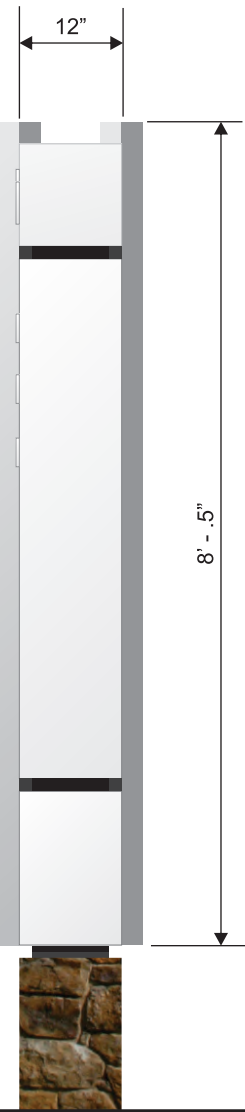
INSET ALUMINUM REVEALS

THE LOWER PANEL WILL BE FLAT ALUMINUM
AND WILL NOT BE ILLUMINATED WITH LED'S.
THIS FACE WILL BE A ONE PIECE FACE WITH
NO SEAMS. THE ADDRESS WILL BE OPAQUE
BLACK VINYL APPLIED FIRST SURFACE.

THE STONE USED IN THE BASE WILL MATCH THE
STONE USED IN THE NEW ED/MOB BUILDING.

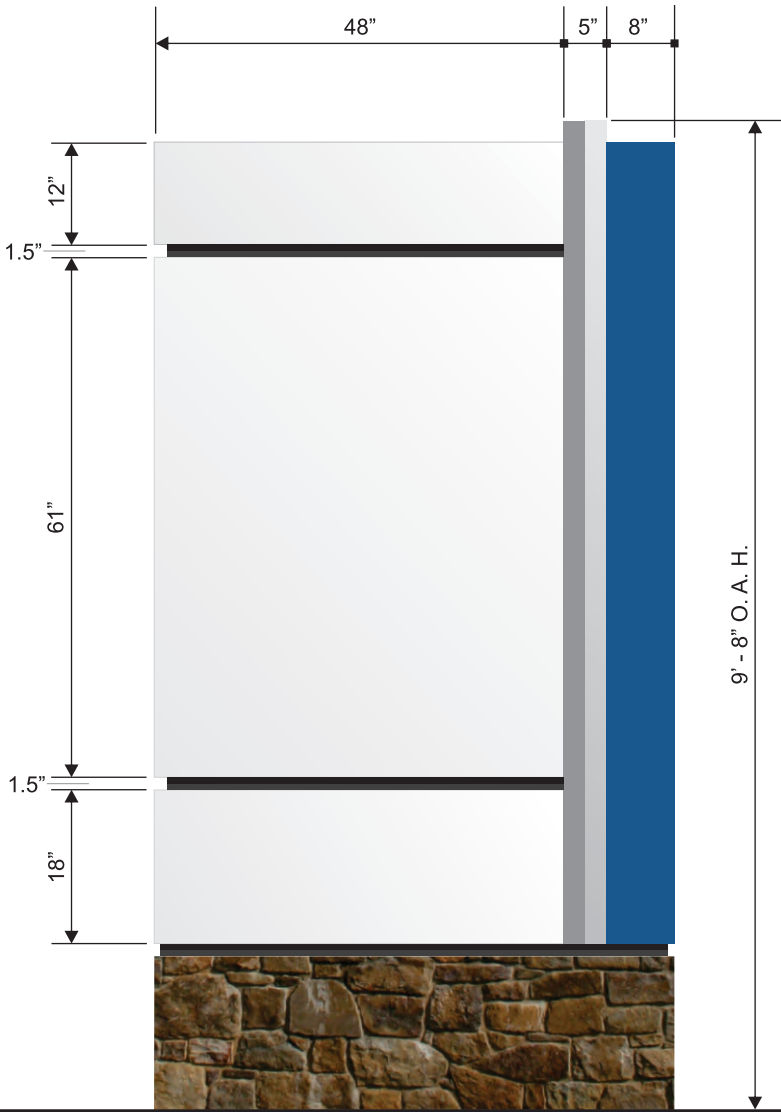
R. SIDE VIEW DETAIL

NOT TO SCALE



SIDE B DETAIL

NOT TO SCALE



a company you can identify with

DATE

JANUARY 8TH, 2016

SCALE

AS INDICATED

CLIENT

VALLEY HEALTH

PROJECT

SMH - ED/MOB

LOCATION

WOODSTOCK, VA

DRAWING #

SMH.EDMOB.BEMSA.05R



Identity America, Inc.
Professional Building
112 Spruce St. Spruce 4
Bluefield, VA 24605

Phone: 276.322.2616
Fax: 276.322.1637

identityamerica.com

COLOR SCHEME:

- WHITE

AKZO-NOBEL PAINT

TRANSLUCENT ACRYLIC
- PMS 653 BLUE

AKZO-NOBEL PAINT

AVERY COBALT BLUE

TRANSLUCENT VINYL
- BLACK

AKZO-NOBEL PAINT

3M OPAQUE VINYL
- SILVER

ANODIZED ALUMINUM
- PMS 485 RED

AKZO-NOBEL PAINT

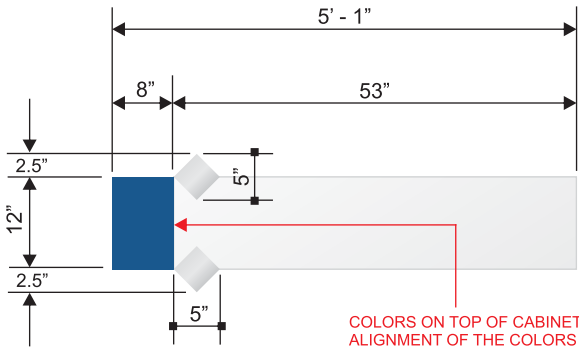
3M POPPY RED

TRANSLUCENT VINYL

UPON ACCEPTANCE A FULL SET OF COLOR
SAMPLES WILL BE PROVIDED FOR APPROVAL

TOP VIEW DETAIL

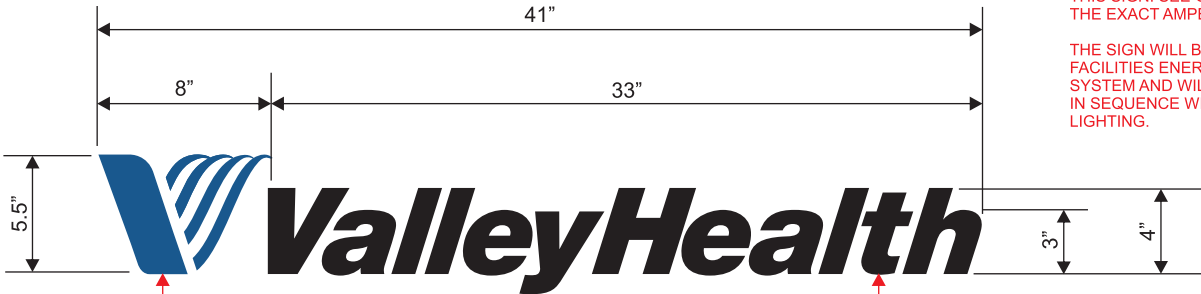
NOT TO SCALE



COLORS ON TOP OF CABINET TO MATCH THE
ALIGNMENT OF THE COLORS ON THE FACE SIDES

LOGO DETAIL

NOT TO SCALE



PMS 653 BLUE | AVERY COBALT BLUE
TRANSLUCENT VINYL

BLACK (OPAQUE)

ELECTRICAL REQUIREMENTS:

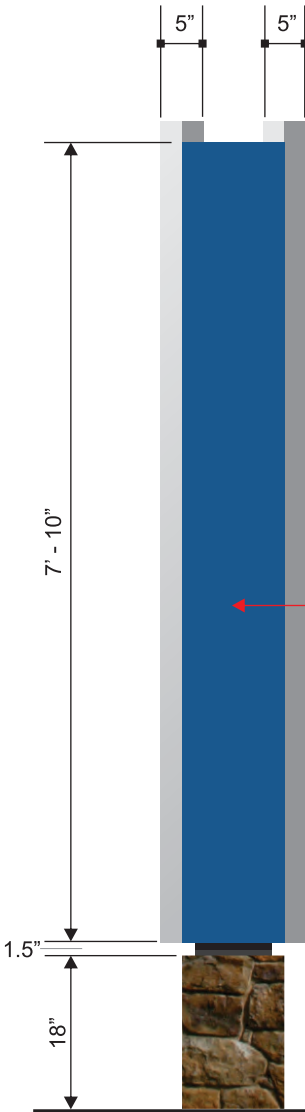
ONE (1) 120 VOLT, SINGLE - PHASE
CIRCUIT WILL BE NEEDED TO POWER
THIS SIGN. SEE GE LED LAYOUT FOR
THE EXACT AMPERAGE.

THE SIGN WILL BE WIRED INTO THE
FACILITIES ENERGY MANAGEMENT
SYSTEM AND WILL TURN ON AND OFF
IN SEQUENCE WITH OTHER AREA
LIGHTING.

GENERAL DESCRIPTION: MANUFACTURE AND INSTALL ONE (1) SINGLE-FACED MONUMENT SIGN. THE SIGN WILL HAVE AN ALL ALUMINUM INTERNAL FRAME. THE CABINET, FACES AND INSET REVEALS WILL BE CONSTRUCTED OF ALUMINUM. THE HEADER PANEL WILL HAVE ROUTED LOGO AND TEXT WITH 1/2" THICK PUSH THRU CLEAR ACRYLIC WITH 3M VINYL APPLIED FIRST SURFACE. THE EMERGENCY PANEL WILL BE FLAT WHITE ACRYLIC WITH 3M POPPY RED TRANSLUCENT VINYL APPLIED FIRST SURFACE. THE EMERGENCY TEXT WILL BE THE WHITE ACRYLIC SHOWING THROUGH. INTERNAL ILLUMINATION BY GE TETRA MAX WHITE LED'S (SEE GE LED LAYOUT). ALL ALUMINUM SURFACES WILL BE PRIMED WITH AN EPOXY PRIMER AND THEN PAINTED WITH AKZO-NOBEL POLYURETHANE PAINT. THE VERTICAL BLUE BAR WILL BE LIGHTED INTERNALLY BY GE TETRA BRIGHT BLUE LED'S (SEE GE LAYOUT). THE FRONT, BACK AND LEFT END OF THE VERTICAL BLUE BAR WILL LIGHT AND WILL BE CONSTRUCTED OF CLEAR LEXAN WITH 90 DEGREE BENT EDGES. THE LEXAN BAR WILL HAVE TRANSLUCENT VINYL TO MATCH PMS 653 BLUE APPLIED FIRST SURFACE. THE SIGN WILL BE INSTALLED ON A SINGLE-STEEL POST WHICH WILL BE SET IN CONCRETE (SEE ATTACHED ENGINEERING). THE SIGN WILL MEET U. L. APPROVAL AND WILL BEAR THE REQUIRED LABELS. THE SIGN WILL HAVE A DECORATIVE STONE BASE WHICH WILL BE INCLUDED BY THE SIGN MANUFACTURER.

L. SIDE VIEW DETAIL

NOT TO SCALE



THE TOP AND BOTTOM OF
THE VERTICAL BLUE BAR
WILL BE ALUMINUM AND
WILL HAVE A RETAINER TO
HOLD THE LEXAN IN PLACE

THE MID SECTION WILL
HAVE FLAT ALUMINUM
PANELS WITH NO SEAMS

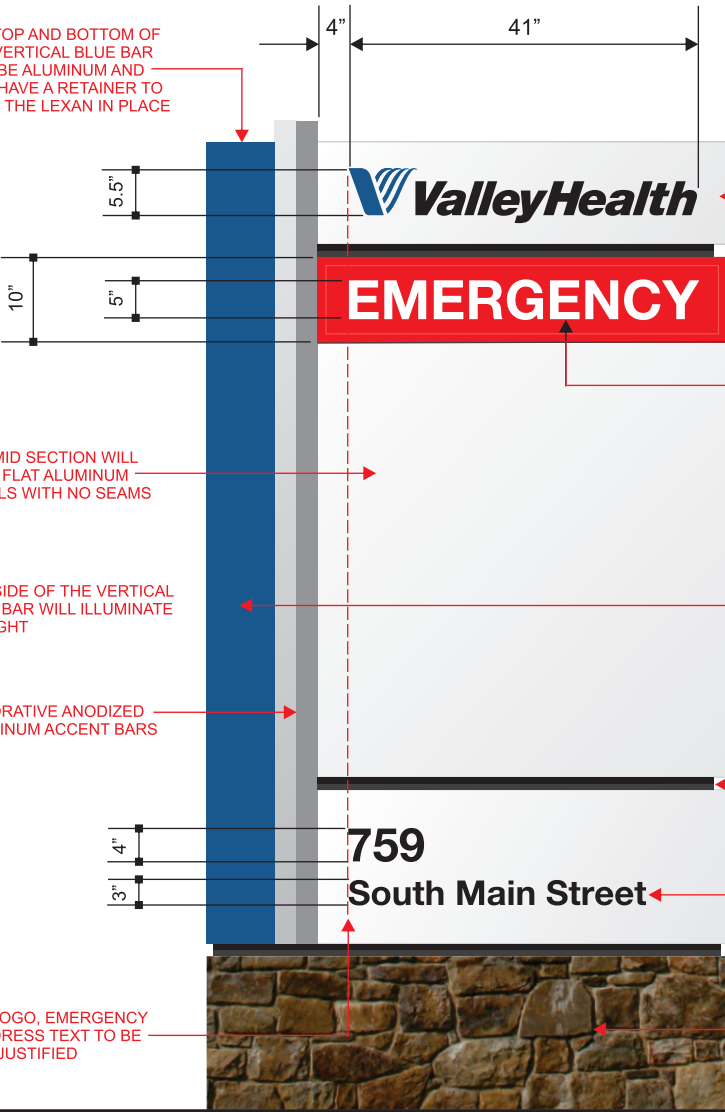
THE SIDE OF THE VERTICAL
BLUE BAR WILL ILLUMINATE
AT NIGHT

DECORATIVE ANODIZED
ALUMINUM ACCENT BARS

THE LOGO, EMERGENCY
& ADDRESS TEXT TO BE
LEFT JUSTIFIED

SIDE A DETAIL

NOT TO SCALE



ValleyHealth

EMERGENCY

759
South Main Street

HEADER PANELS TO BE ALUMINUM WITH
ROUTED LOGO & TEXT WITH PUSH THRU
1/2" ACRYLIC. THE EDGES WILL BE CLEAR.
THE LOGO WILL HAVE PMS 653 BLUE
TRANSLUCENT VINYL APPLIED TO THE
1ST SURFACE. THE TEXT WILL HAVE BLACK
OPAQUE VINYL APPLIED 1ST SURFACE.

THE EMERGENCY PANEL WILL BE FLAT WHITE
TRANSLUCENT ACRYLIC WITH PREMIUM RED
TRANSLUCENT VINYL APPLIED FIRST SURFACE.
THE EMERGENCY TEXT WILL BE THE WHITE
ACRYLIC SHOWING THROUGH.

THE VERTICAL BLUE BAR WILL BE FLAT LEXAN
WITH 90 DEGREE BENDS ON THE EDGES. THE
VERTICAL BAR WILL HAVE TRANSLUCENT VINYL
APPLIED FIRST SURFACE TO MATCH PMS 653
BLUE. THE VERTICAL BAR WILL BE ILLUMINATED
INTERNALLY BY BRIGHT BLUE GE LED LIGHTING.
THE FRONT, LEFT SIDE AND BACK WILL LIGHT AT
NIGHT.

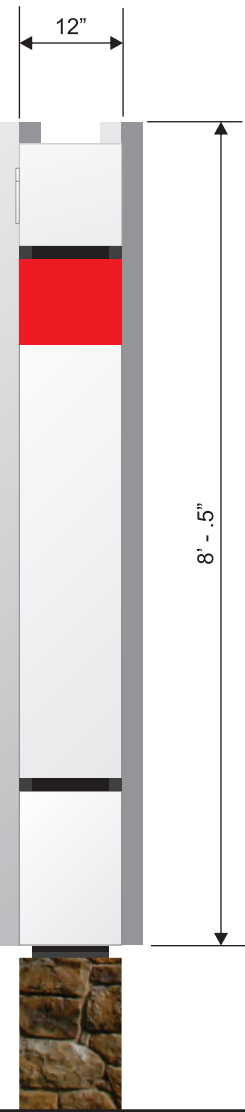
INSET ALUMINUM REVEALS

THE LOWER PANEL WILL BE FLAT ALUMINUM
AND WILL NOT BE ILLUMINATED WITH LED'S.
THIS FACE WILL BE A ONE PIECE FACE WITH
NO SEAMS. THE ADDRESS WILL BE OPAQUE
BLACK VINYL APPLIED FIRST SURFACE.

THE STONE USED IN THE BASE WILL MATCH THE
STONE USED IN THE NEW ED/MOB BUILDING.

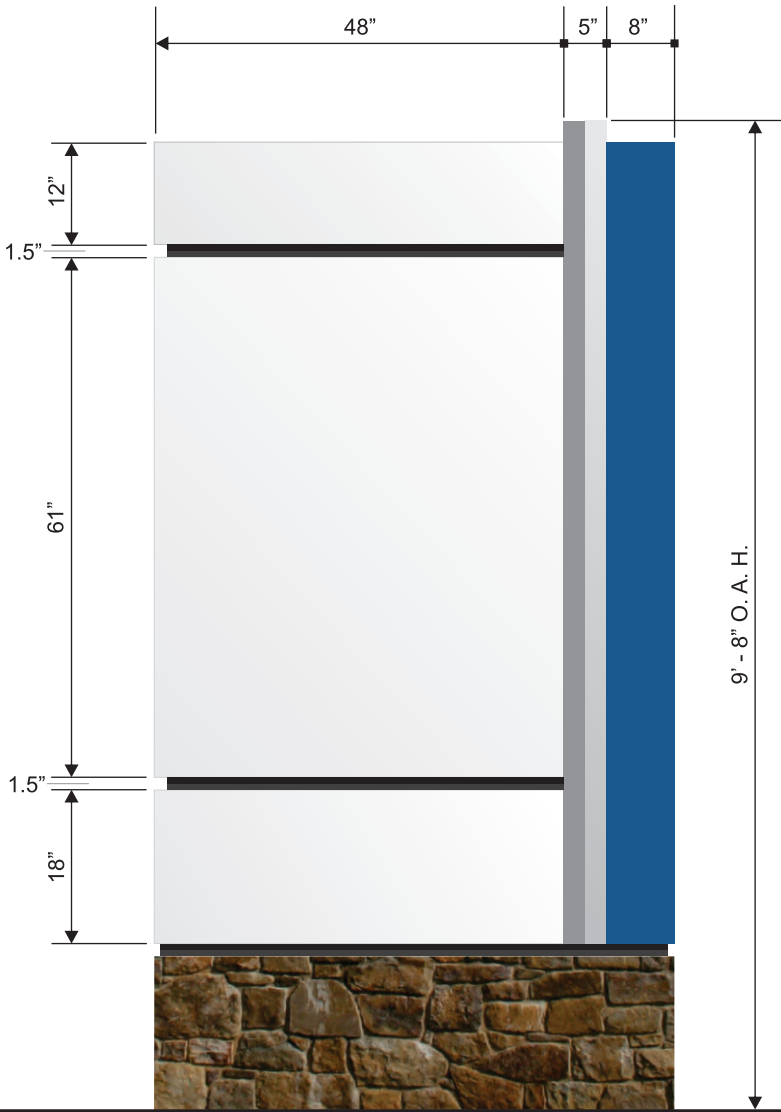
R. SIDE VIEW DETAIL

NOT TO SCALE



SIDE B DETAIL

NOT TO SCALE



a company you can identify with

DATE

JANUARY 9TH, 2016

SCALE

AS INDICATED

CLIENT

VALLEY HEALTH

PROJECT

SMH - ED/MOB

LOCATION

WOODSTOCK, VA

DRAWING #

SMH.EDMOB.BEMSB.06R



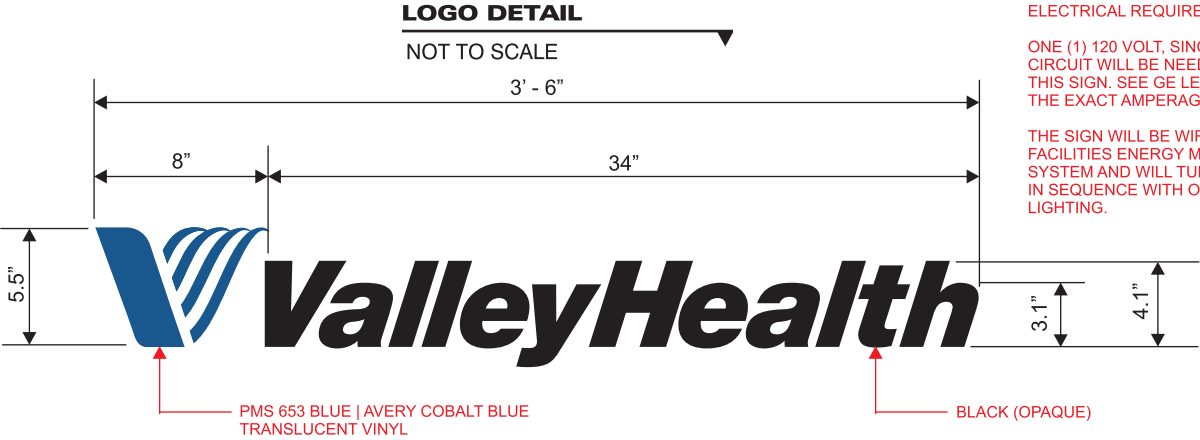
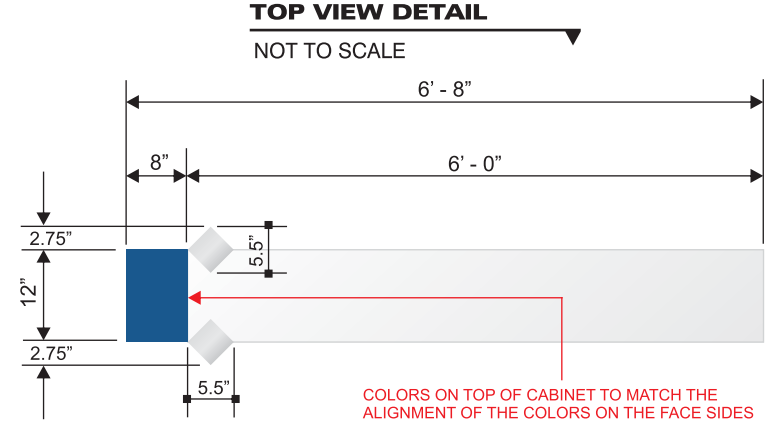
Identity America, Inc.
Professional Building
112 Spruce St. Spruce 4
Bluefield, VA 24605

Phone: 276.322.2616
Fax: 276.322.1637

identityamerica.com

COLOR SCHEME:

- WHITE
AKZO-NOBEL PAINT
TRANSLUCENT ACRYLIC
- PMS 653 BLUE
AKZO-NOBEL PAINT
AVERY COBALT BLUE
TRANSLUCENT VINYL
- BLACK
AKZO-NOBEL PAINT
3M OPAQUE VINYL
- SILVER
ANODIZED ALUMINUM
- PMS 485 RED
AKZO-NOBEL PAINT
3M POPPY RED
TRANSLUCENT VINYL



ELECTRICAL REQUIREMENTS:

ONE (1) 120 VOLT, SINGLE- PHASE
CIRCUIT WILL BE NEEDED TO POWER
THIS SIGN. SEE GE LED LAYOUT FOR
THE EXACT AMPERAGE.

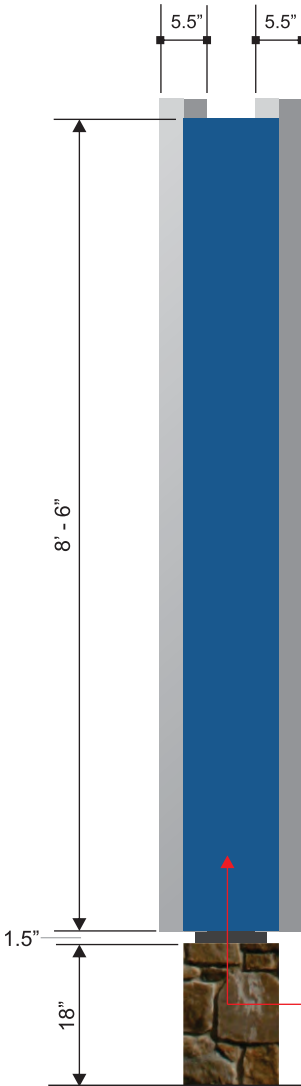
THE SIGN WILL BE WIRED INTO THE
FACILITIES ENERGY MANAGEMENT
SYSTEM AND WILL TURN ON AND OFF
IN SEQUENCE WITH OTHER AREA
LIGHTING.

GENERAL DESCRIPTION: MANUFACTURE AND INSTALL ONE (1) DOUBLE-FACED MONUMENT SIGN. THE SIGN WILL HAVE AN ALL ALUMINUM INTERNAL FRAME. THE CABINET, FACES AND INSET REVEALS WILL BE CON-
STRUCTED OF ALUMINUM. THE HEADER PANEL AND SUB-HEADING PANEL WILL HAVE ROUTED LOGO AND TEXT WITH 1/2" THICK PUSH THRU CLEAR ACRYLIC WITH VINYL APPLIED FIRST SURFACE. THE EMERGENCY
PANEL WILL BE FLAT WHITE ACRYLIC WITH 3M POPPY RED TRANSLUCENT VINYL APPLIED FIRST SURFACE. THE EMERGENCY TEXT WILL BE THE WHITE ACRYLIC SHOWING THROUGH. INTERNAL ILLUMINATION BY GE
TETRA MAX WHITE LED'S (SEE GE LED LAYOUT). ALL ALUMINUM SURFACES WILL BE PRIMED WITH AN EPOXY PRIMER AND THEN PAINTED WITH AKZO-NOBEL POLYURETHANE PAINT. THE VERTICAL BLUE BAR WILL
BE LIGHTED INTERNALLY BY GE TETRA BRIGHT BLUE LED'S (SEE GE LAYOUT). THE FRONT, BACK AND LEFT END OF THE VERTICAL BLUE BAR WILL LIGHT AND WILL BE CONSTRUCTED OF CLEAR LEXAN WITH 90
DEGREE BENT EDGES. THE LEXAN BAR WILL HAVE TRANSLUCENT VINYL TO MATCH PMS 653 BLUE APPLIED FIRST SURFACE. THE SIGN WILL BE INSTALLED ON A SINGLE-STEEL POST WHICH WILL BE SET IN
CONCRETE (SEE ATTACHED ENGINEERING). THE SIGN WILL MEET U. L. APPROVAL AND WILL BEAR THE REQUIRED LABELS. THE SIGN WILL HAVE A DECORATIVE STONE BASE WHICH WILL BE INCLUDED.

L. SIDE VIEW DETAIL

NOT TO SCALE

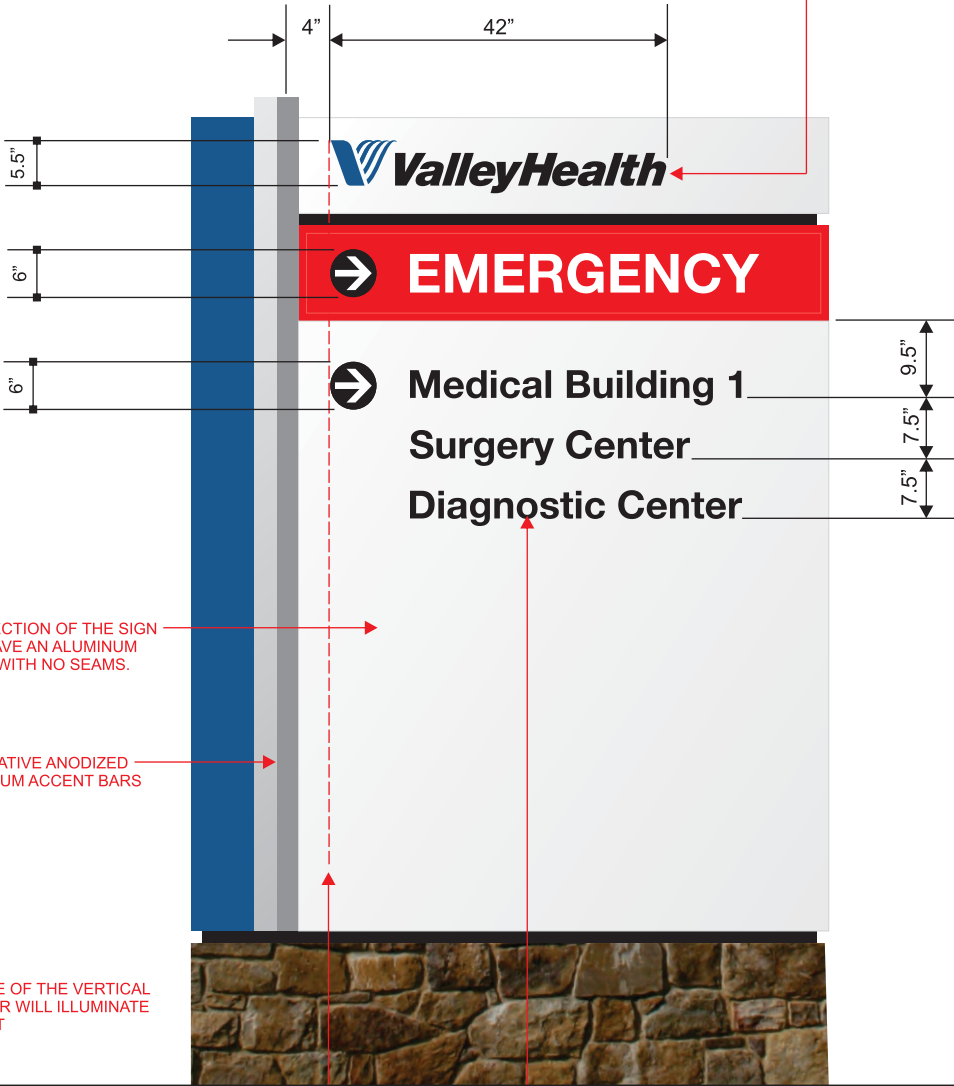
UPON ACCEPTANCE A FULL SET OF COLOR
SAMPLES WILL BE PROVIDED FOR APPROVAL



SIDE A DETAIL

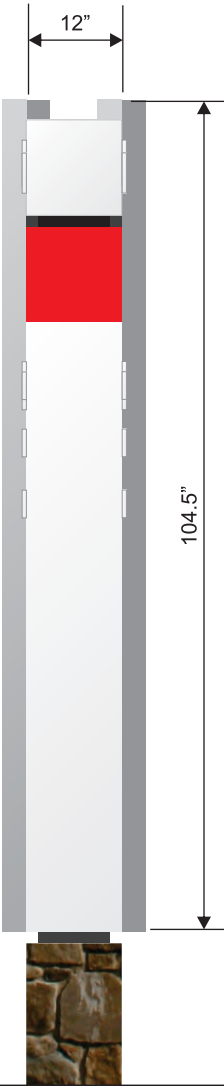
NOT TO SCALE

HEADER PANELS TO BE ALUMINUM WITH ROUTED LOGO & TEXT WITH PUSH THRU 1/2" ACRYLIC. THE EDGES WILL BE CLEAR.
THE LOGO WILL HAVE PMS 653 BLUE TRANSLUCENT VINYL APPLIED TO THE 1ST SURFACE. THE TEXT WILL HAVE BLACK VINYL.



R. SIDE VIEW DETAIL

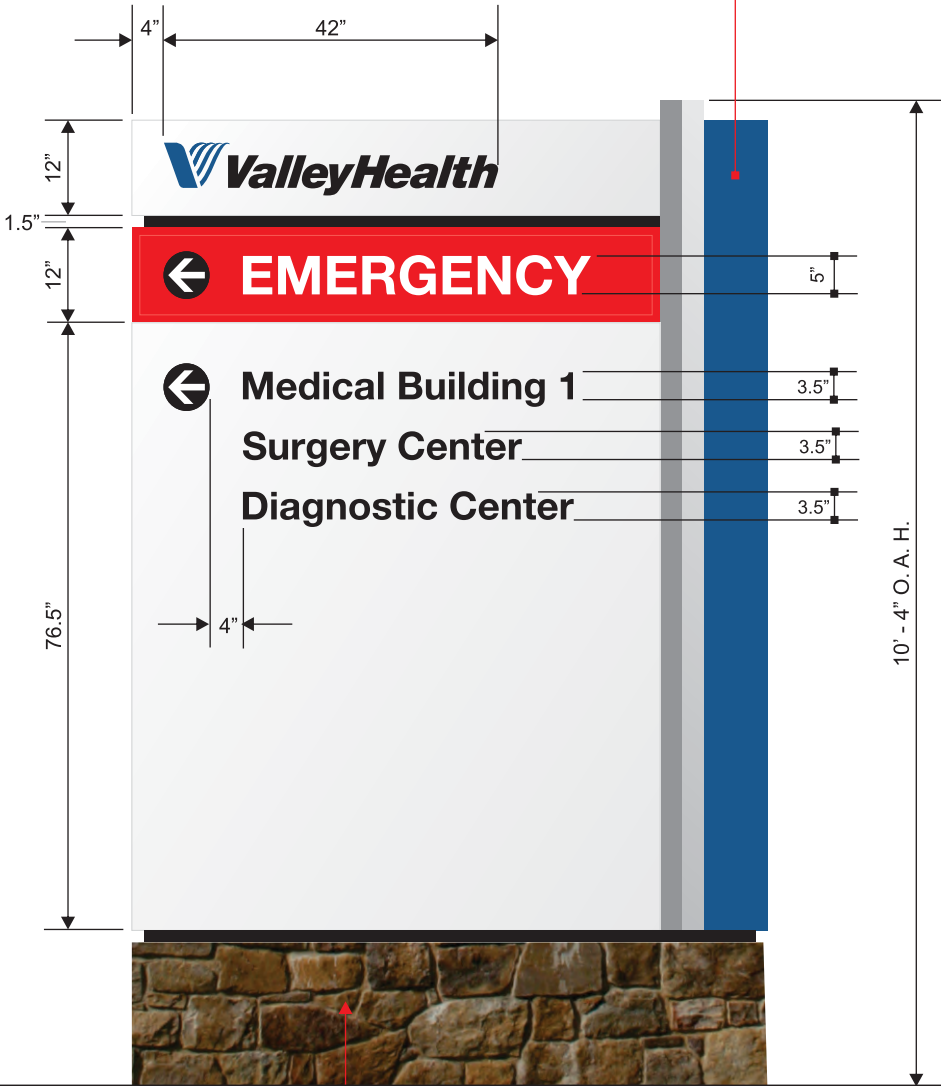
NOT TO SCALE



SIDE B DETAIL

NOT TO SCALE

THE VERTICAL BLUE BAR WILL BE FLAT LEXAN WITH 90 DEGREE BENDS ON THE EDGES. THE VERTICAL BAR WILL
HAVE TRANSLUCENT VINYL APPLIED FIRST SURFACE TO MATCH PMS 653 BLUE. THE VERTICAL BAR WILL BE ILLUM-
INATED INTERNALLY BY BRIGHT BLUE GE LED LIGHTING. THE FRONT, LEFT SIDE AND BACK WILL LIGHT AT NIGHT.



THE VALLEYHEALTH LOGO AND THE CIRCLES
WITH ARROWS TO BE LEFT JUSTIFIED

THE SUB-HAEADING PANELS TO BE ALUMINUM WITH ROUTED ARROWS & TEXT WITH PUSH THRU 1/2" ACRYLIC.
THE EDGES WILL BE CLEAR. THE TEXT AND ARROW WILL HAVE OPAQUE BLACK VINYL APPLIED 1ST SURFACE.

THE STONE USED IN THE BASE WILL MATCH THE
STONE USED IN THE NEW ED/MOB BUILDING.



a company you can identify with

DATE

APRIL 27TH, 2016

SCALE

AS INDICATED

CLIENT

VALLEY HEALTH

PROJECT

SMH - ED/MOB

LOCATION

WOODSTOCK, VA

DRAWING #

SMH.EDMOB.E4DIR.07R2



Identity America, Inc.

Professional Building
112 Spruce St. Spruce 4
Bluefield, VA 24605

Phone: 276.322.2616
Fax: 276.322.1637

identityamerica.com