

ED | MOB SIGNAGE PROJECT

- A BUILDING LETTERS - SOUTH ELEVATION
- B EMERGENCY CANOPY LETTERS
- C BUILDING LETTERS - EAST ELEVATION
- D AMBULANCE CANOPY LETTERS
- E AMBULANCE CANOPY LETTERS
- F BUILDING ENTRANCE MONUMENT SIGN
- G BUILDING ENTRANCE MONUMENT SIGN
- H E4 PRIMARY DIRECTIONAL SIGN

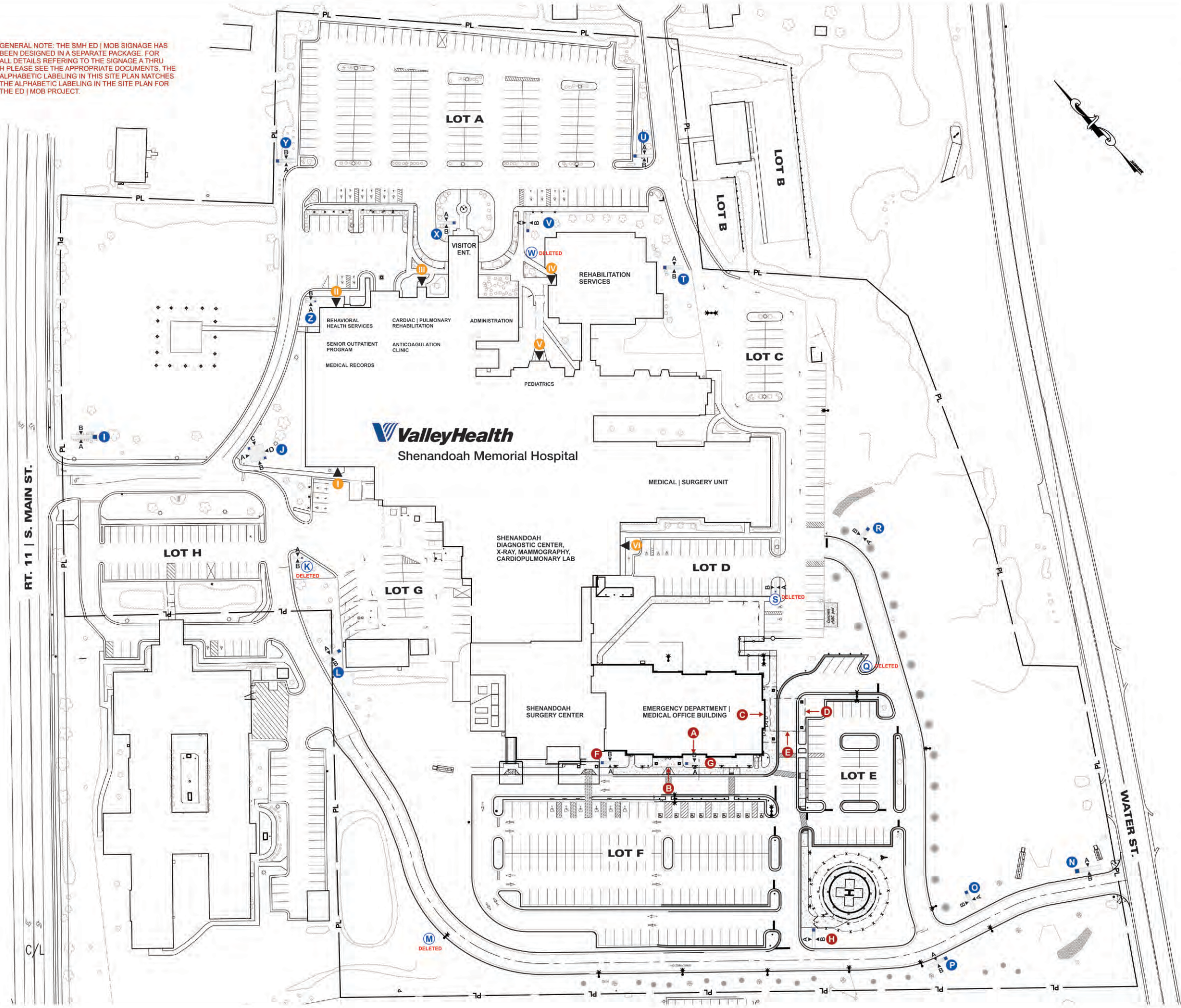
SMH MONUMENT SIGN UPGRADE

- I CAMPUS IDENTITY MONUMENT SIGN
- J E4 PRIMARY DIRECTIONAL SIGN
- K THIS SIGN HAS BEEN DELETED
- L E4 PRIMARY DIRECTIONAL SIGN
- M THIS SIGN HAS BEEN DELETED
- N CAMPUS IDENTITY MONUMENT SIGN
- O E4 PRIMARY DIRECTIONAL SIGN
- P E4 PRIMARY DIRECTIONAL SIGN
- Q THIS SIGN HAS BEEN DELETED
- R E4 PRIMARY DIRECTIONAL SIGN
- S THIS SIGN HAS BEEN DELETED
- T E4 PRIMARY DIRECTIONAL SIGN
- U E4 PRIMARY DIRECTIONAL SIGN
- V E6 SECONDARY DIRECTIONAL SIGN
- W THIS SIGN HAS BEEN DELETED
- X BUILDING ENTRANCE MONUMENT SIGN
- Y E6 SECONDARY DIRECTIONAL SIGN
- Z E3 BUILDING ADDRESS SIGN

WALL SIGNS AT ENTRANCES

- I TEXT TO BE DETERMINED
- II BEHAVIORAL HEALTH SERVICES  
SENIOR OUTPATIENT PROGRAM  
MEDICAL RECORDS
- III CARDIAC | PULMONARY REHABILITATION  
ANTICOAGULATION CLINIC
- IV REHABILITATION SERVICES
- V PEDIATRICS
- VI DIAGNOSTIC CENTER

GENERAL NOTE: THE SMH ED | MOB SIGNAGE HAS BEEN DESIGNED IN A SEPARATE PACKAGE. FOR ALL DETAILS REFERRING TO THE SIGNAGE A THRU H PLEASE SEE THE APPROPRIATE DOCUMENTS. THE ALPHABETIC LABELING IN THIS SITE PLAN MATCHES THE ALPHABETIC LABELING IN THE SITE PLAN FOR THE ED | MOB PROJECT.



REVISIONS:	
I	11-6-15
II	11-12-15
III	11-20-15
IV	11-30-15
V	1-03-16
VI	3-15-16



COLOR SCHEME:

- WHITE  
AKZO-NOBEL PAINT  
ACRYLIC #7328 WHITE
- PMS 653 BLUE  
AKZO-NOBEL PAINT  
3M TRANSLUCENT VINYL
- BLACK  
AKZO-NOBEL PAINT  
3M OPAQUE VINYL
- SILVER  
ANODIZED ALUMINUM
- PMS 485 RED  
AKZO-NOBEL PAINT  
3M TRANSLUCENT VINYL

UPON ACCEPTANCE A FULL SET OF COLOR  
SAMPLES WILL BE PROVIDED FOR APPROVAL

L. SIDE VIEW DETAIL  
NOT TO SCALE

TOP VIEW DETAIL  
NOT TO SCALE

LOGO DETAIL  
NOT TO SCALE

ELECTRICAL REQUIREMENTS:  
  
ONE (1) 120 VOLT, 20 AMP, SINGLE-  
PHASE CIRCUIT WILL BE NEEDED  
TO POWER THIS SIGN  
  
THE SIGN WILL BE WIRED INTO THE  
FACILITIES ENERGY MANAGEMENT  
SYSTEM AND WILL TURN ON AND OFF  
IN SEQUENCE WITH OTHER AREA  
LIGHTING.

GENERAL DESCRIPTION: MANUFACTURE AND INSTALL ONE (1) DOUBLE-FACED ILLUMINATED CAMPUS IDENTITY MONUMENT SIGN. THE SIGN WILL HAVE AN ALL ALUMINUM WELDED INTERNAL STRUCTURE. THE CABINET, FACES, INSET REVEALS AND DECORATIVE ACCENT BARS WILL BE CONSTRUCTED OF ALUMINUM. THE UPPER AND LOWER SECTIONS OF THE SIGN WILL HAVE ROUTED ALUMINUM FACES WITH 1/2" PUSH THRU ACRYLIC LOGO AND TEXT. THE TEXT AND LOGO WILL HAVE PREMIUM VINYL GRAPHICS APPLIED TO FIRST SURFACE. THE EMERGENCY SECTION WILL HAVE WHITE ACRYLIC FACES WITH PREMIUM VINYL GRAPHICS. THE MAIN BODY WILL BE INTERNALLY ILLUMINATED WITH GE BRIGHT WHITE LED LIGHTING. THE VERTICAL BLUE BAR WILL BE INTERNALLY ILLUMINATED WITH GE TETRA MAX BRIGHT BLUE LED MODULES. THE FACES WILL BE TRANSLUCENT WHITE ACRYLIC WITH TRANSLUCENT BLUE VINYL GRAPHICS APPLIED TO FIRST SURFACE. THE SIGN WILL MEET U. L. APPROVAL AND WILL BEAR ALL NECESSARY LABELS. THE SIGN WILL BE INSTALLED ON A SINGLE STEEL POST WHICH WILL BE SET IN A CONCRETE FOUNDATION. UPON ACCEPTANCE PROFESSIONAL SEALED ENGINEERED DRAWINGS WILL BE PROVIDED WHICH WILL SHOW ALL STEEL SIZES AND FOUNDATION DETAILS.

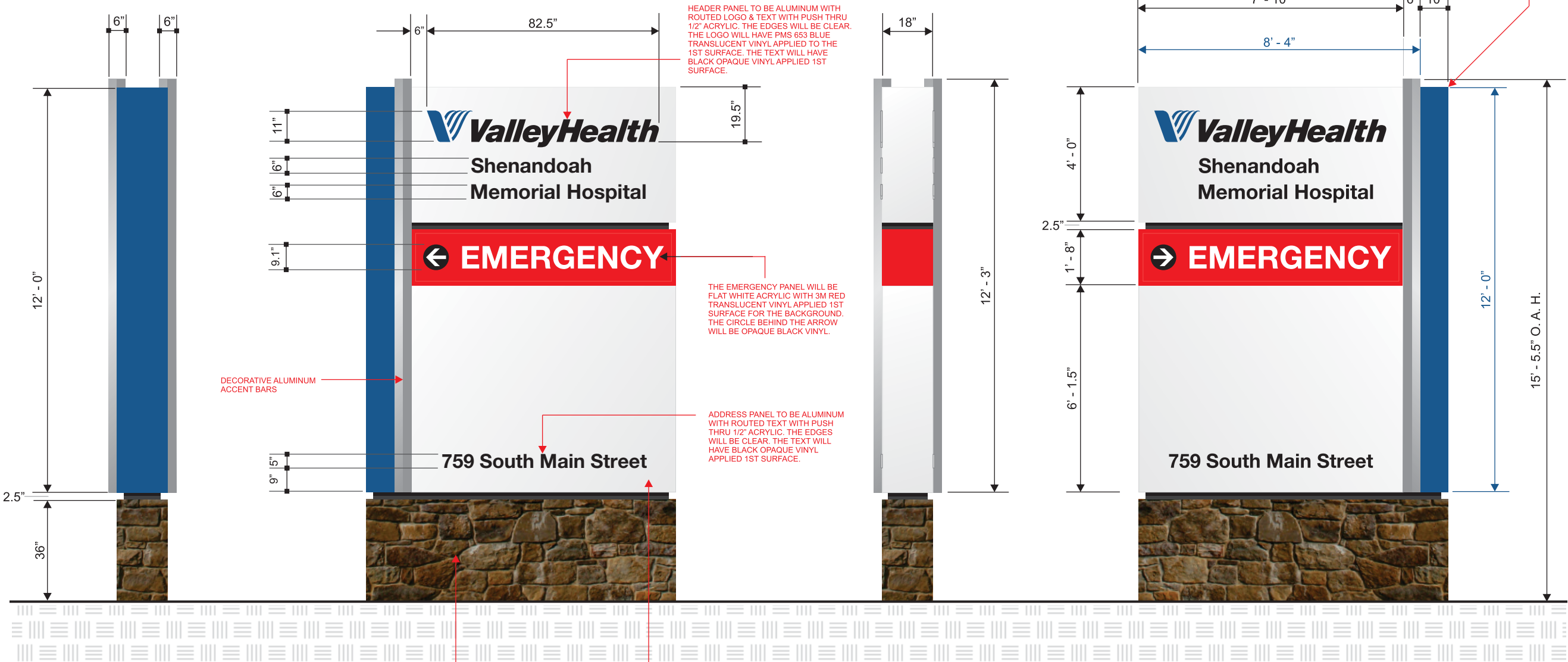
SIDE B DETAIL  
NOT TO SCALE

R. SIDE VIEW DETAIL  
NOT TO SCALE

SQUARE FOOTAGE CALCULATION:  
  
SIGN BODY HEIGHT: 12' - 0"  
SIGN BODY WIDTH: 8' - 4"  
SQ. FT. TOTAL: 100 S. F.

SIDE A DETAIL  
NOT TO SCALE

THE VERTICAL SECTION OF THE SIGN  
WILL BE INTERNALLY ILLUMINATED BY  
GE TETRA MAX BRIGHT BLUE LED MOD-  
ULES. THE FACES WILL BE TRANSLUCENT  
WHITE ACRYLIC WITH TRANSLUCENT BLUE  
VINYL GRAPHICS APPLIED FIRST SURFACE.



THE STONE USED IN THE BASE WILL MATCH THE  
STONE USED IN THE NEW ED/MOB BUILDING.

THE MAIN BODY OF THE SIGN WILL BE CONSTRUCTED TO HAVE AN ALL ALUMINUM WELDED INTERNAL STRUCTURE.  
THE SIGN WILL BE INTERNALLY ILLUMINATED WITH GE BRIGHT WHITE LED LIGHTING. SEE GE LAYOUT FOR DETAILS.



a company you can identify with

DATE

FEBRUARY 26TH, 2016

SCALE

AS INDICATED

CLIENT

VALLEY HEALTH

PROJECT

SMH CAMPUS SIGNAGE

LOCATION

WOODSTOCK, VA

DRAWING #

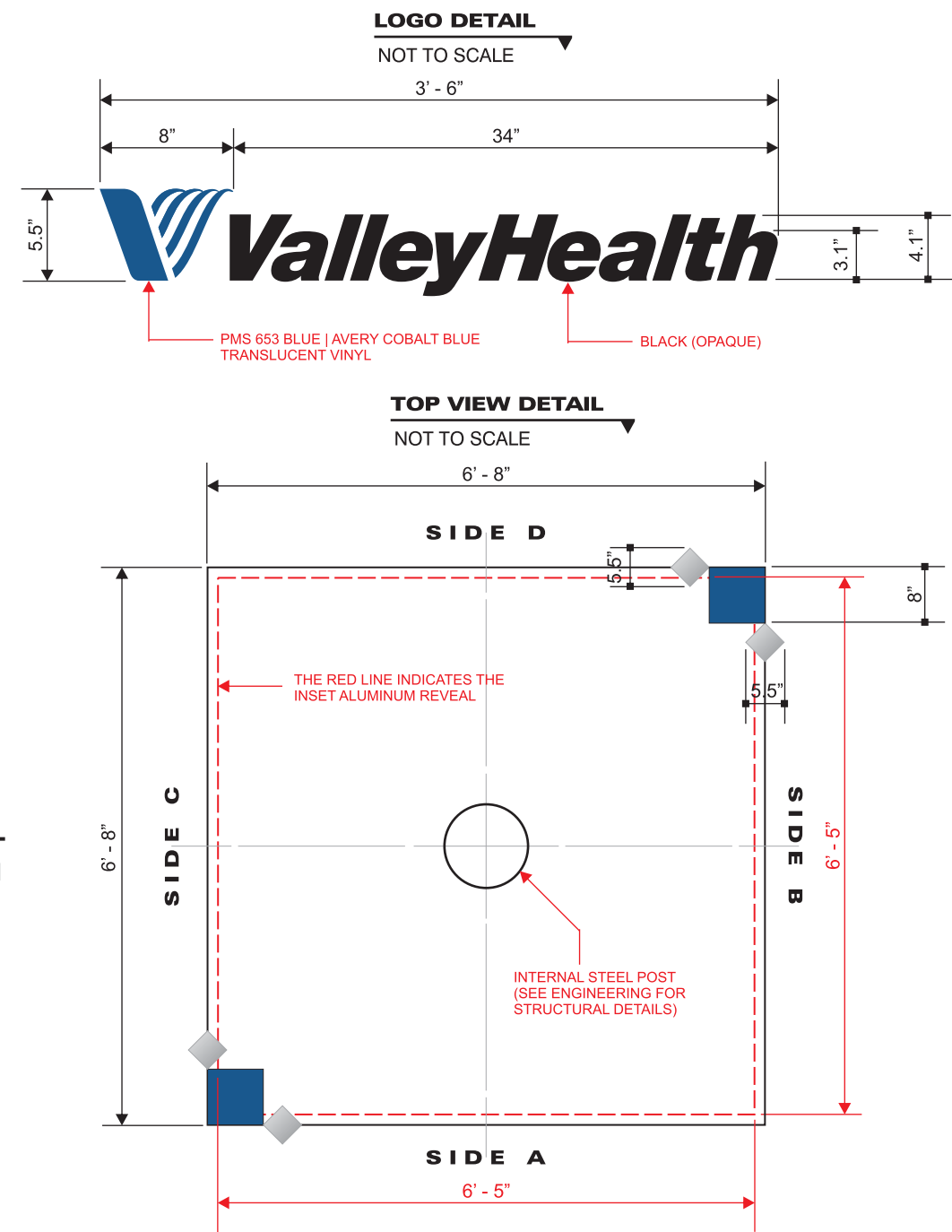
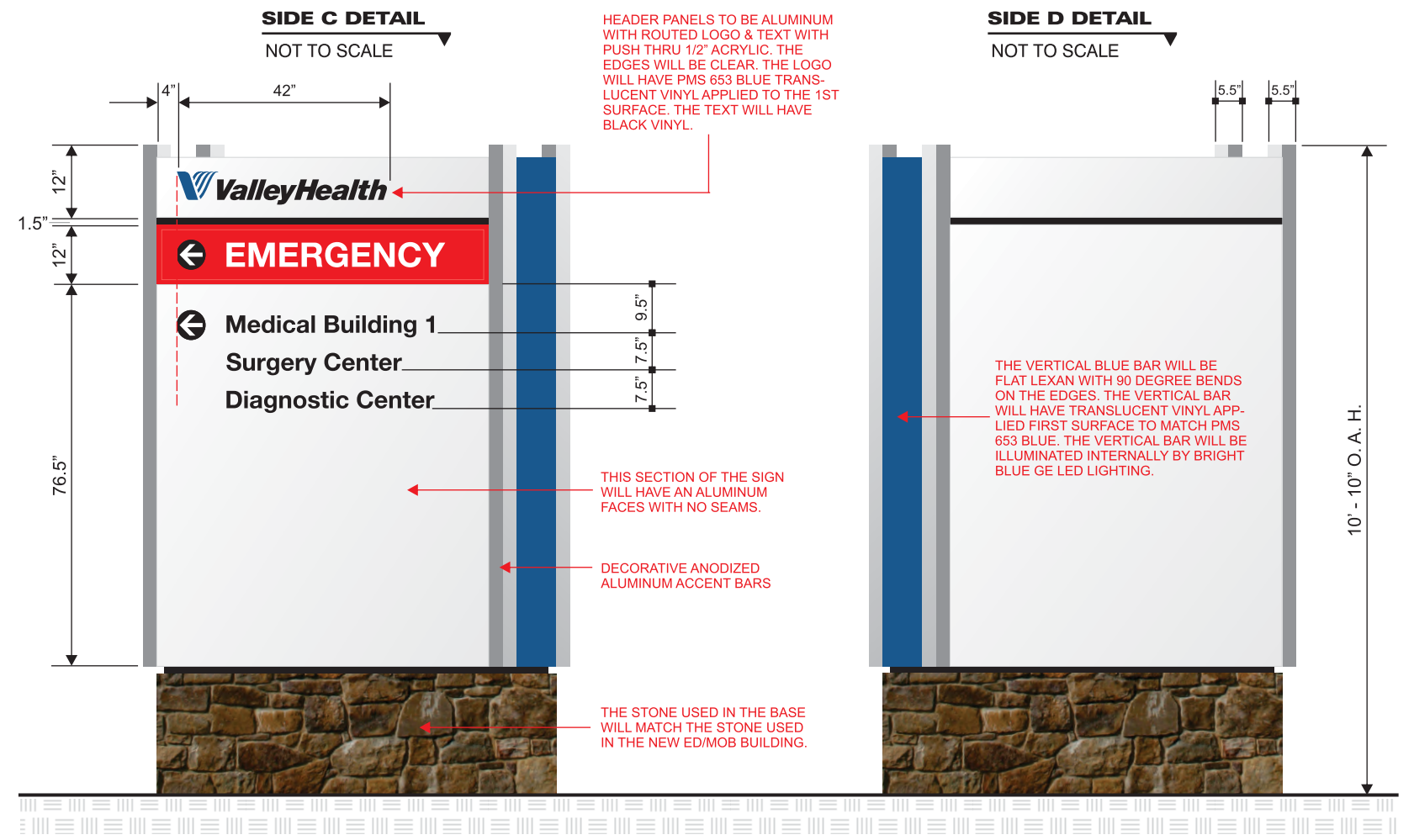
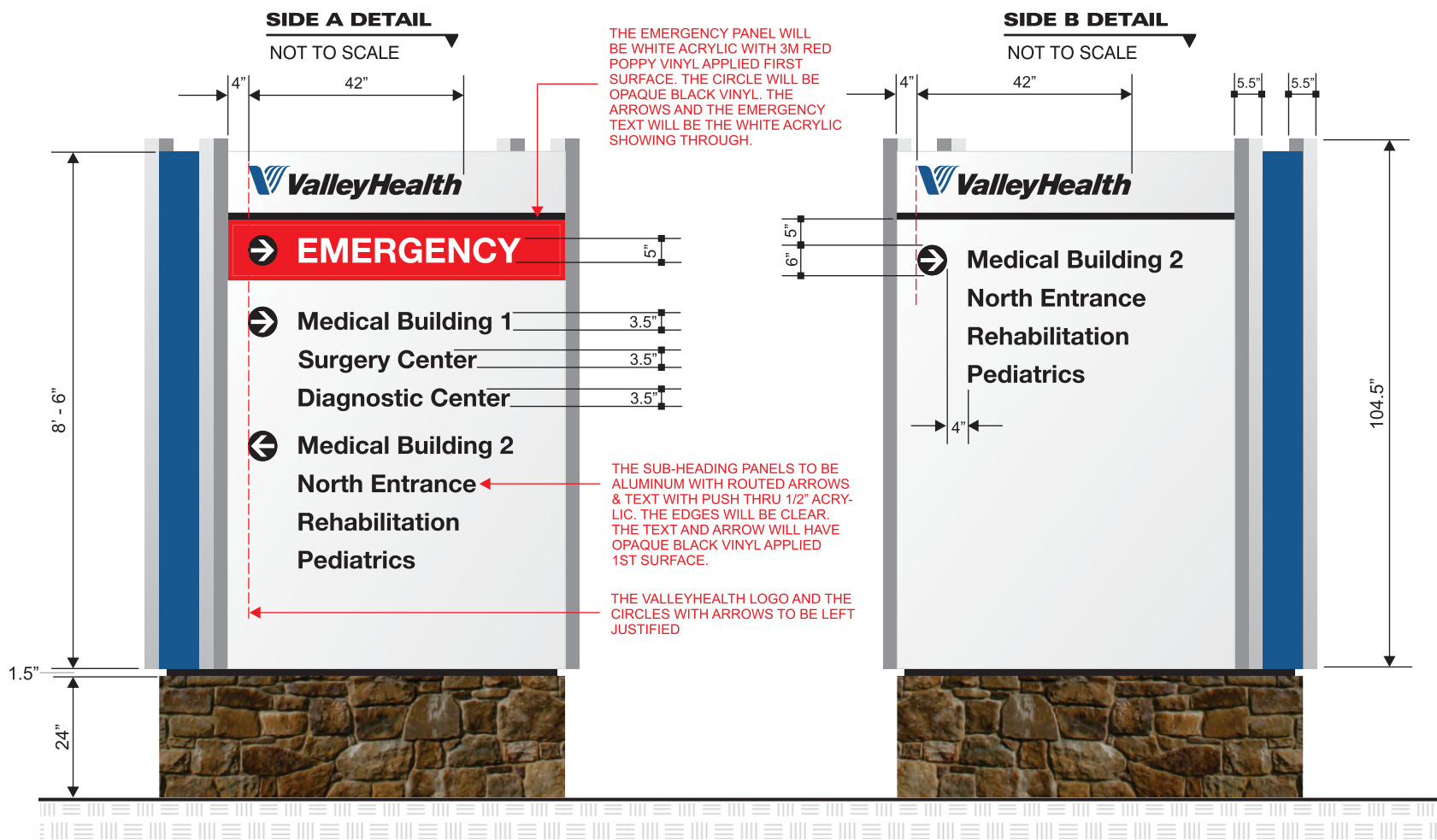
VH.SMH.SIGNI.01ALT2



Identity America, Inc.  
Professional Building  
112 Spruce St. Spruce 4  
Bluefield, VA 24605

Phone: 276.322.2616  
Fax: 276.322.1637

identityamerica.com






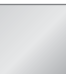

GENERAL DESCRIPTION: MANUFACTURE AND INSTALL ONE (1) 4 SIDED MONUMENT SIGN. THE SIGN WILL HAVE AN ALL ALUMINUM INTERNAL FRAME. THE CABINET, FACES AND INSET REVEALS WILL BE CONSTRUCTED OF ALUMINUM. THE HEADER PANEL AND SUB-HEADING PANEL WILL HAVE ROUTED LOGO AND TEXT WITH 1/2" THICK PUSH THRU CLEAR ACRYLIC WITH VINYL APPLIED FIRST SURFACE. THE EMERGENCY PANEL WILL BE FLAT WHITE ACRYLIC WITH 3M POPPY RED TRANSLUCENT VINYL APPLIED FIRST SURFACE. THE EMERGENCY TEXT WILL BE THE WHITE ACRYLIC SHOWING THROUGH. INTERNAL ILLUMINATION BY GE TETRA MAX WHITE LED'S (SEE GE LED LAYOUT). ALL ALUMINUM SURFACES WILL BE PRIMED WITH AN EPOXY PRIMER AND THEN PAINTED WITH AKZO-NOBEL POLYURETHANE PAINT. THE VERTICAL BLUE BAR WILL BE LIGHTED INTERNALLY BY GE TETRA BRIGHT BLUE LED'S (SEE GE LAYOUT). THE VERTICAL BLUE BAR WILL LIGHT AND WILL BE CONSTRUCTED OF CLEAR LEXAN. THE LEXAN BAR WILL HAVE TRANSLUCENT VINYL TO MATCH PMS 653 BLUE APPLIED FIRST SURFACE. THE SIGN WILL BE INSTALLED ON A SINGLE-STEEL POST WHICH WILL BE SET IN CONCRETE (SEE ATTACHED ENGINEERING). THE SIGN WILL MEET U. L. APPROVAL AND WILL BEAR THE REQUIRED LABELS. THE SIGN WILL HAVE A DECORATIVE STONE BASE WHICH WILL BE INCLUDED.

**ELECTRICAL REQUIREMENTS:**

ONE (1) 120 VOLT, SINGLE-PHASE CIRCUIT WILL BE NEEDED TO POWER THIS SIGN. SEE GE LED LAYOUT FOR THE EXACT AMPERAGE.

THE SIGN WILL BE WIRED INTO THE FACILITIES ENERGY MANAGEMENT SYSTEM AND WILL TURN ON AND OFF IN SEQUENCE WITH OTHER AREA LIGHTING.

**COLOR SCHEME:**

	- WHITE AKZO-NOBEL PAINT TRANSLUCENT ACRYLIC
	- PMS 653 BLUE AKZO-NOBEL PAINT AVERY COBALT BLUE TRANSLUCENT VINYL
	- BLACK AKZO-NOBEL PAINT 3M OPAQUE VINYL
	- SILVER ANODIZED ALUMINUM
	- PMS 485 RED AKZO-NOBEL PAINT 3M POPPY RED TRANSLUCENT VINYL



a company you can identify with

**DATE**

JANUARY 19TH, 2016

**SCALE**

AS INDICATED

**CLIENT**

VALLEY HEALTH

**PROJECT**

SMH CAMPUS SIGNAGE

**LOCATION**

WOODSTOCK, VA

**DRAWING #**

VH.SMH.SIGNJ.02



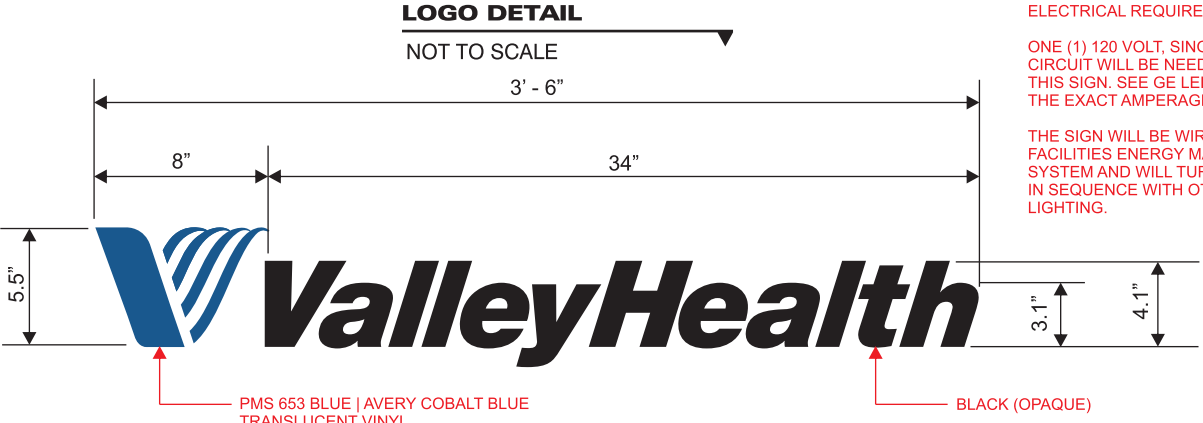
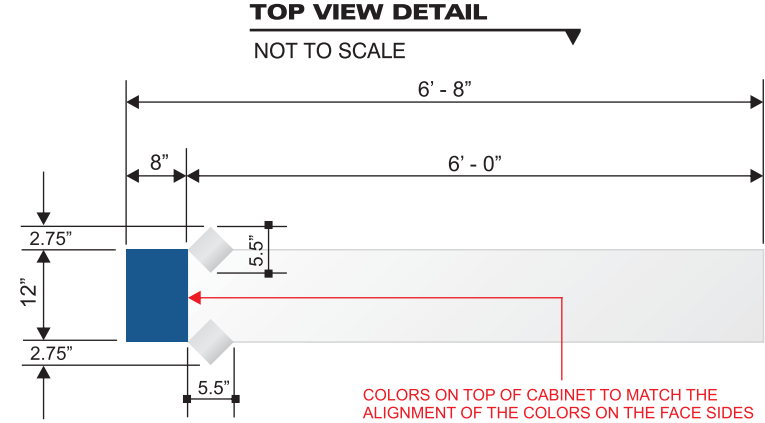
**Identity America, Inc.**  
Professional Building  
112 Spruce St. Spruce 4  
Bluefield, VA 24605

Phone: 276.322.2616  
Fax: 276.322.1637

[identityamerica.com](http://identityamerica.com)

COLOR SCHEME:

- WHITE  
AKZO-NOBEL PAINT  
TRANSLUCENT ACRYLIC
- PMS 653 BLUE  
AKZO-NOBEL PAINT  
AVERY COBALT BLUE  
TRANSLUCENT VINYL
- BLACK  
AKZO-NOBEL PAINT  
3M OPAQUE VINYL
- SILVER  
ANODIZED ALUMINUM
- PMS 485 RED  
AKZO-NOBEL PAINT  
3M POPPY RED  
TRANSLUCENT VINYL



ELECTRICAL REQUIREMENTS:

ONE (1) 120 VOLT, SINGLE- PHASE  
CIRCUIT WILL BE NEEDED TO POWER  
THIS SIGN. SEE GE LED LAYOUT FOR  
THE EXACT AMPERAGE.

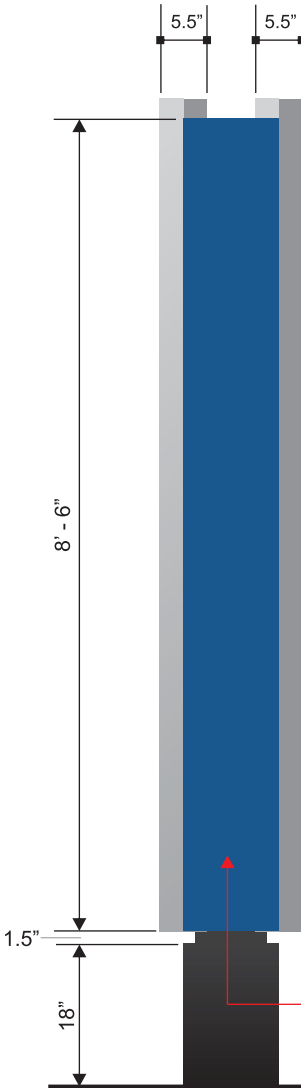
THE SIGN WILL BE WIRED INTO THE  
FACILITIES ENERGY MANAGEMENT  
SYSTEM AND WILL TURN ON AND OFF  
IN SEQUENCE WITH OTHER AREA  
LIGHTING.

GENERAL DESCRIPTION: MANUFACTURE AND INSTALL ONE (1) DOUBLE-FACED MONUMENT SIGN. THE SIGN WILL HAVE AN ALL ALUMINUM INTERNAL FRAME. THE CABINET, FACES AND INSET REVEALS WILL BE CON-  
STRUCTED OF ALUMINUM. THE HEADER PANEL AND SUB-HEADING PANEL WILL HAVE ROUTED LOGO AND TEXT WITH 1/2" THICK PUSH THRU CLEAR ACRYLIC WITH VINYL APPLIED FIRST SURFACE. THE EMERGENCY  
PANEL WILL BE FLAT WHITE ACRYLIC WITH 3M POPPY RED TRANSLUCENT VINYL APPLIED FIRST SURFACE. THE EMERGENCY TEXT WILL BE THE WHITE ACRYLIC SHOWING THROUGH. INTERNAL ILLUMINATION BY GE  
TETRA MAX WHITE LED'S (SEE GE LED LAYOUT). ALL ALUMINUM SURFACES WILL BE PRIMED WITH AN EPOXY PRIMER AND THEN PAINTED WITH AKZO-NOBEL POLYURETHANE PAINT. THE VERTICAL BLUE BAR WILL  
BE LIGHTED INTERNALLY BY GE TETRA BRIGHT BLUE LED'S (SEE GE LAYOUT). THE FRONT, BACK AND LEFT END OF THE VERTICAL BLUE BAR WILL LIGHT AND WILL BE CONSTRUCTED OF CLEAR LEXAN WITH 90  
DEGREE BENT EDGES. THE LEXAN BAR WILL HAVE TRANSLUCENT VINYL TO MATCH PMS 653 BLUE APPLIED FIRST SURFACE. THE SIGN WILL BE INSTALLED ON A SINGLE-STEEL POST WHICH WILL BE SET IN  
CONCRETE (SEE ATTACHED ENGINEERING). THE SIGN WILL MEET U. L. APPROVAL AND WILL BEAR THE REQUIRED LABELS. THE SIGN WILL HAVE AN ALL ALUMINUM BASE.

L. SIDE VIEW DETAIL

NOT TO SCALE

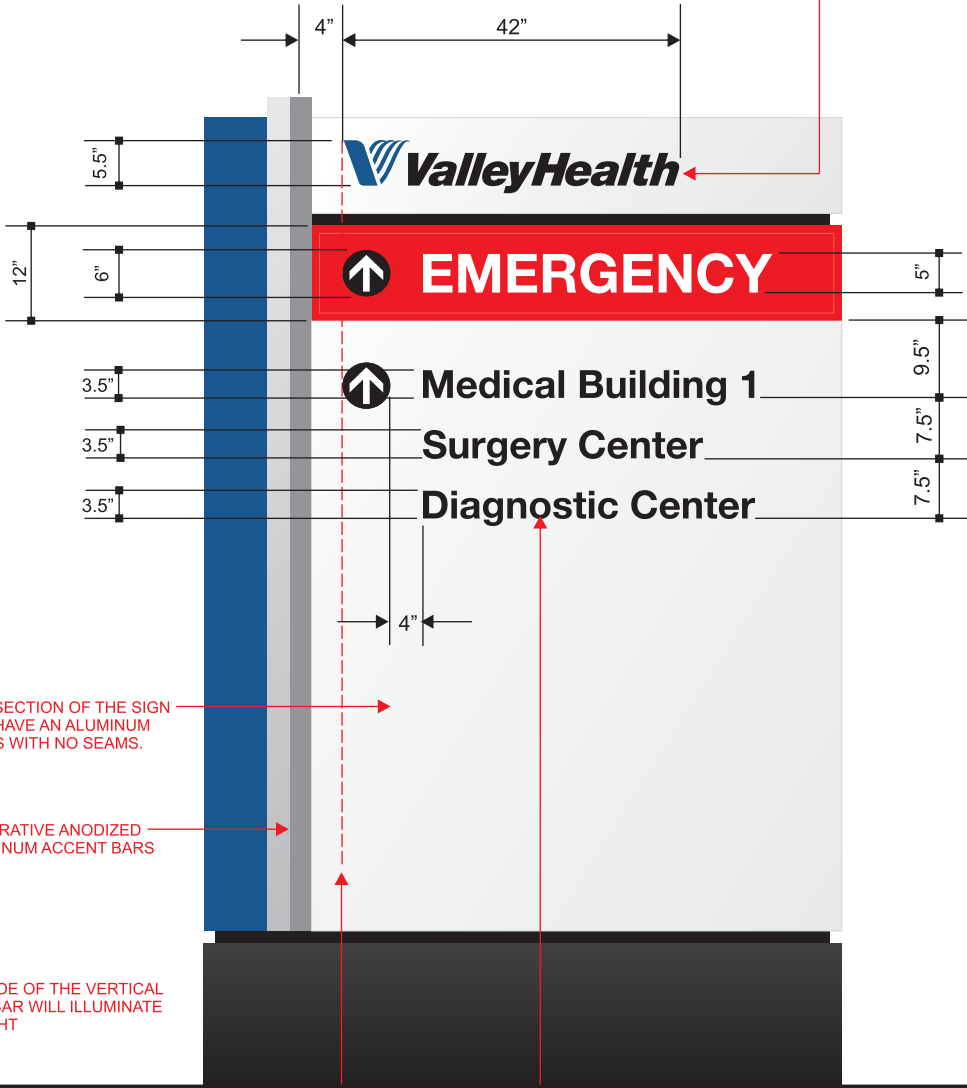
UPON ACCEPTANCE A FULL SET OF COLOR  
SAMPLES WILL BE PROVIDED FOR APPROVAL



SIDE A DETAIL

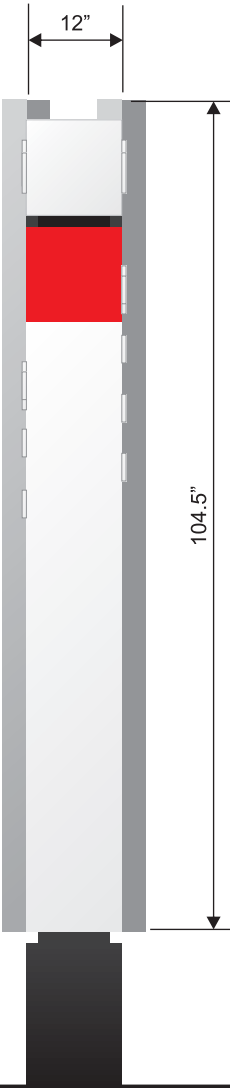
NOT TO SCALE

HEADER PANELS TO BE ALUMINUM WITH ROUTED LOGO & TEXT WITH PUSH THRU 1/2" ACRYLIC. THE EDGES WILL BE CLEAR.  
THE LOGO WILL HAVE PMS 653 BLUE TRANSLUCENT VINYL APPLIED TO THE 1ST SURFACE. THE TEXT WILL HAVE BLACK VINYL.



R. SIDE VIEW DETAIL

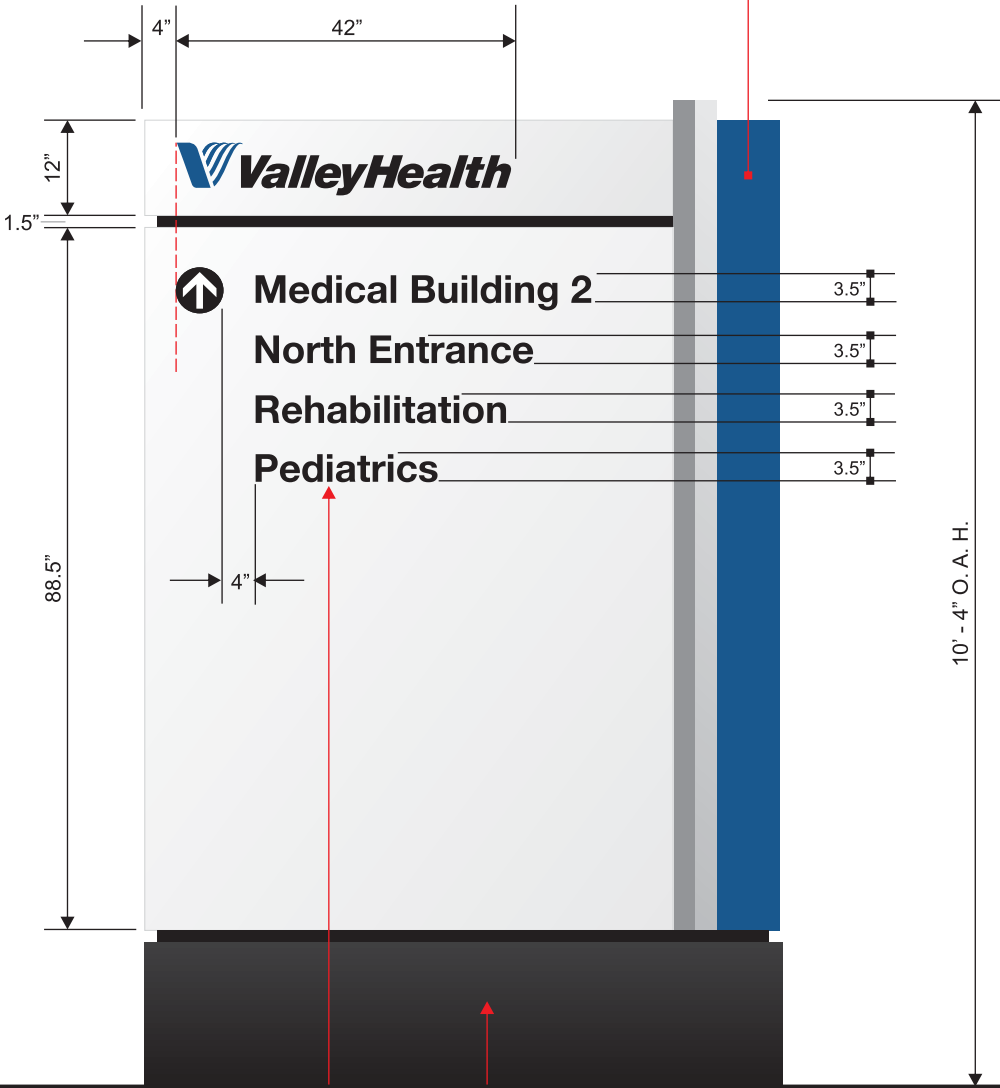
NOT TO SCALE



SIDE B DETAIL

NOT TO SCALE

THE VERTICAL BLUE BAR WILL BE FLAT LEXAN WITH 90 DEGREE BENDS ON THE EDGES. THE VERTICAL BAR WILL  
HAVE TRANSLUCENT VINYL APPLIED FIRST SURFACE TO MATCH PMS 653 BLUE. THE VERTICAL BAR WILL BE ILLUM-  
INATED INTERNALLY BY BRIGHT BLUE GE LED LIGHTING. THE FRONT, LEFT SIDE AND BACK WILL LIGHT AT NIGHT.



THE VALLEYHEALTH LOGO AND THE CIRCLES  
WITH ARROWS TO BE LEFT JUSTIFIED

THE SUB-HAEADING PANELS TO BE ALUMINUM WITH ROUTED ARROWS & TEXT WITH PUSH THRU 1/2" ACRYLIC.  
THE EDGES WILL BE CLEAR. THE TEXT AND ARROW WILL HAVE OPAQUE BLACK VINYL APPLIED 1ST SURFACE.

THE SIGN BASE WILL HAVE AN ALUMINUM INTERNAL  
FRAME SHEETED WITH ALUMINUM.



a company you can identify with

DATE

JANUARY 15TH, 2016

SCALE

AS INDICATED

CLIENT

VALLEY HEALTH

PROJECT

SMH CAMPUS SIGNAGE

LOCATION

WOODSTOCK, VA

DRAWING #

VH.SMH.SIGNL.03



Identity America, Inc.

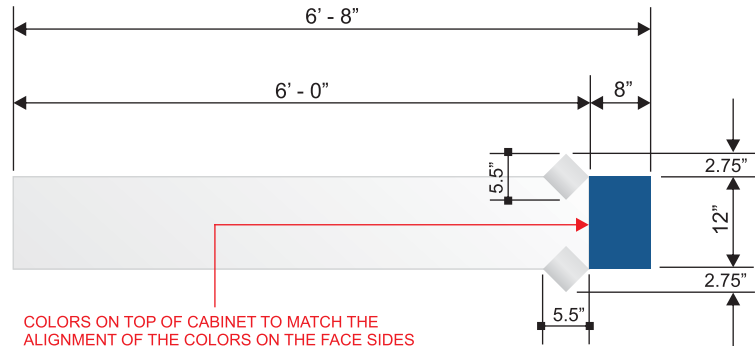
Professional Building  
112 Spruce St. Spruce 4  
Bluefield, VA 24605

Phone: 276.322.2616  
Fax: 276.322.1637

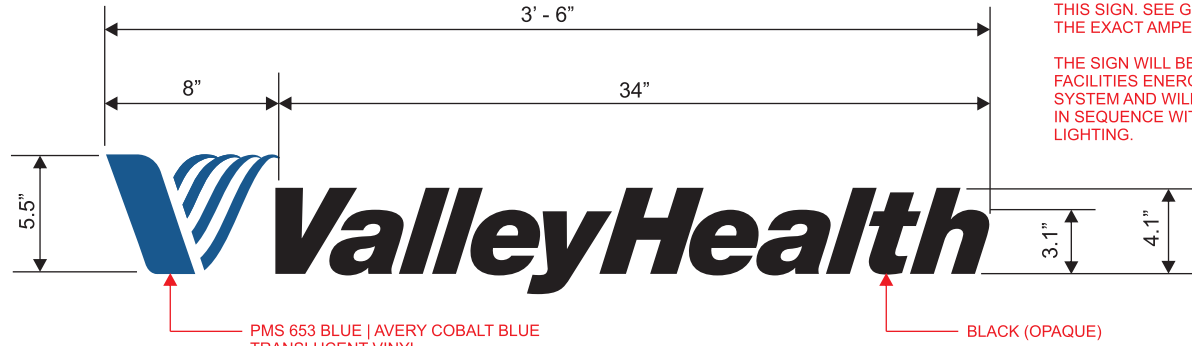
identityamerica.com





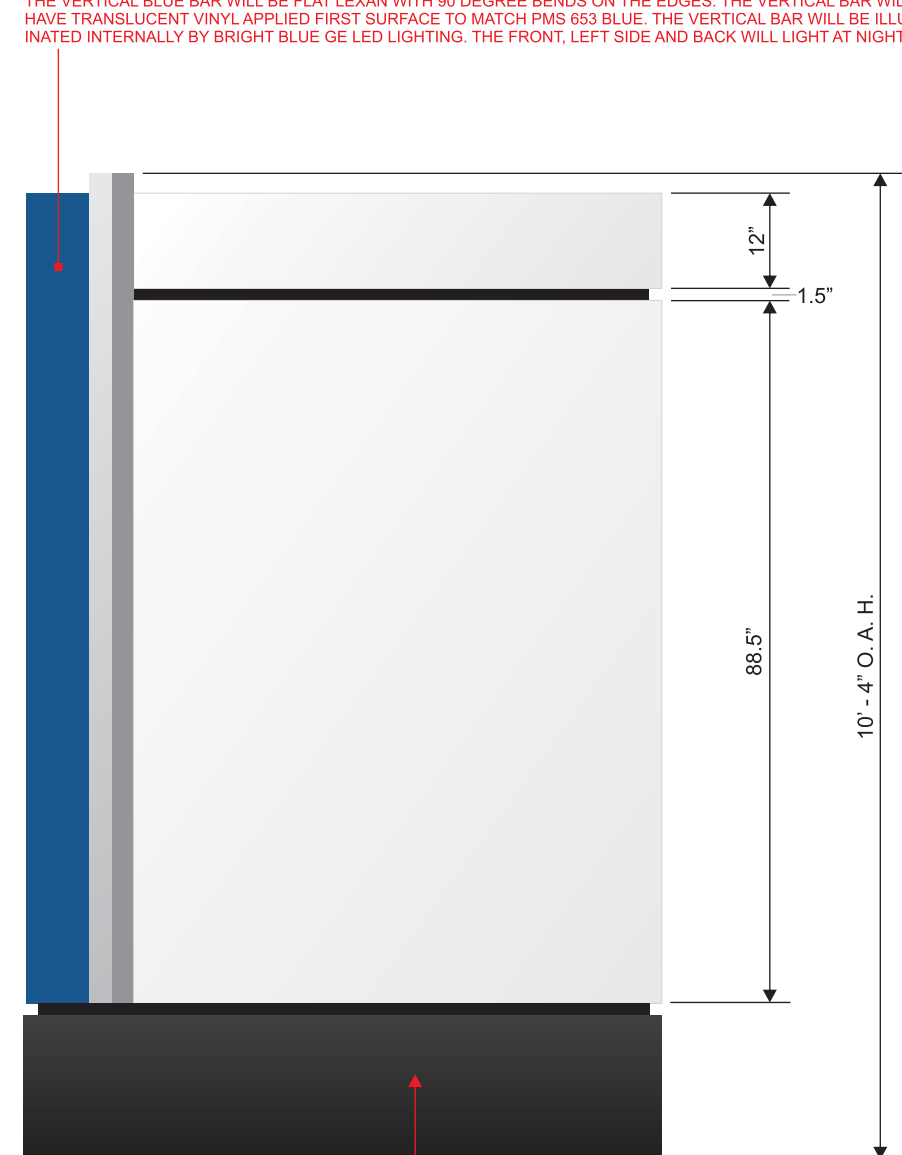
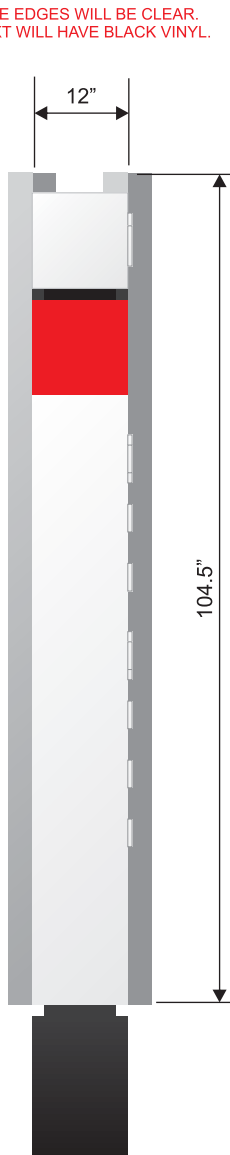
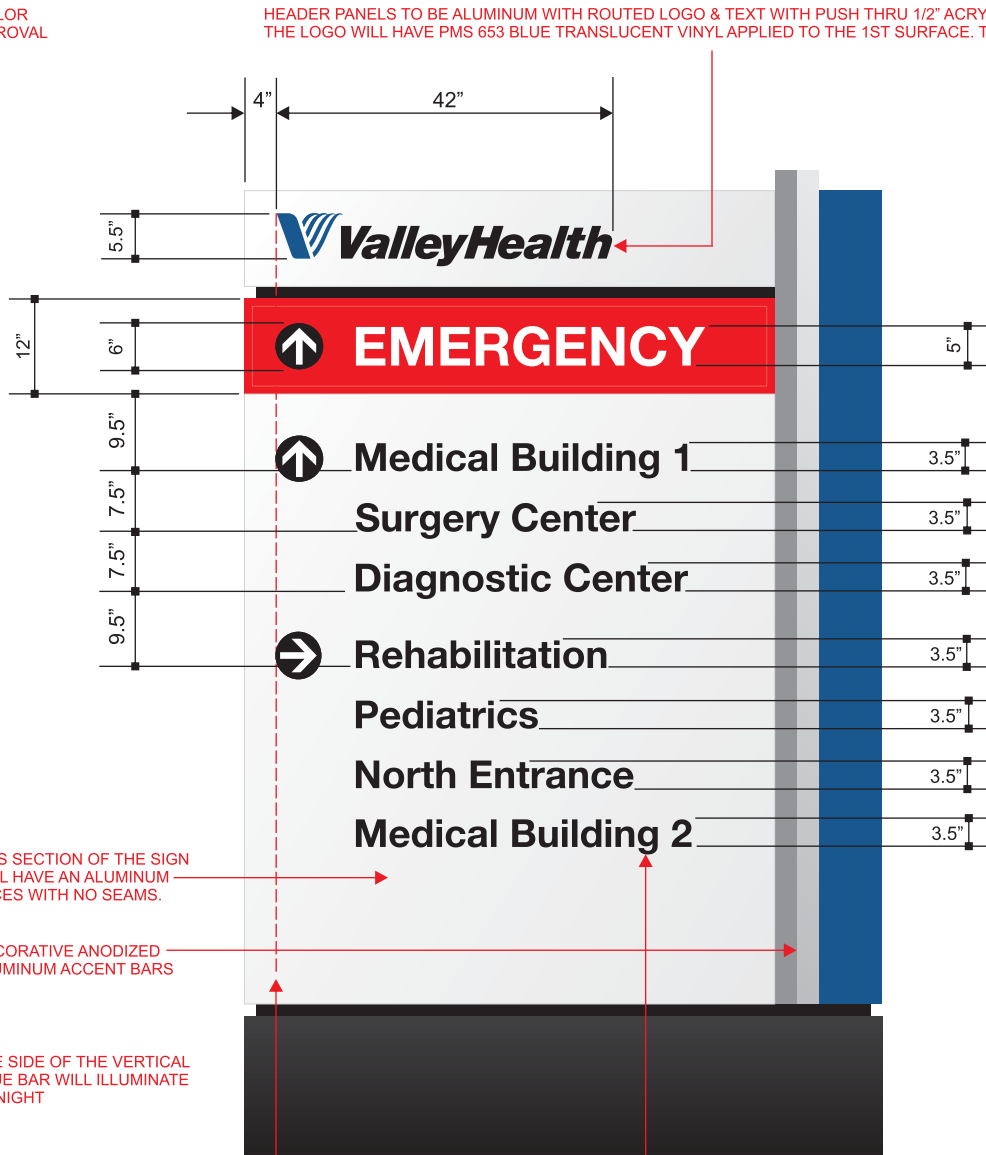


COLORS ON TOP OF CABINET TO MATCH THE  
ALIGNMENT OF THE COLORS ON THE FACE SIDES



- PMS 653 BLUE | AVERY COBALT BLUE TRANSLUCENT VINYL

— BLACK (OPAQUE)



THE VALLEYHEALTH LOGO AND THE CIRCLES  
WITH ARROWS TO BE LEFT JUSTIFIED

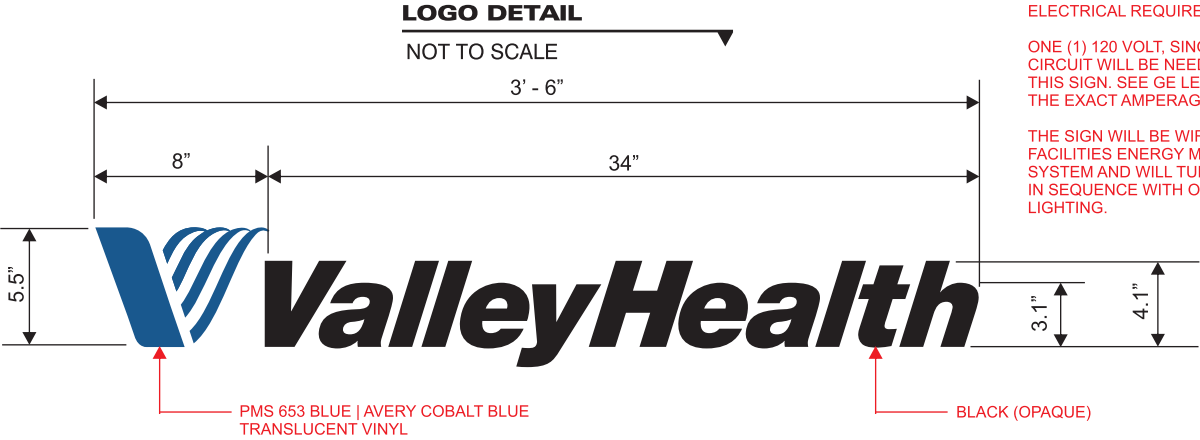
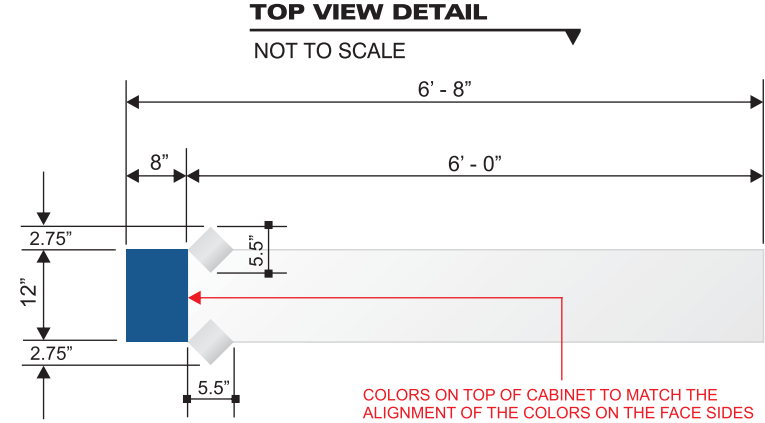
THE SUB-HEADING PANELS TO BE ALUMINUM WITH ROUTED ARROWS & TEXT WITH PUSH THRU 1/2" ACRYLIC. THE EDGES WILL BE CLEAR. THE TEXT AND ARROW WILL HAVE OPAQUE BLACK VINYL APPLIED 1ST SURFACE.



**identityamerica.com**

COLOR SCHEME:

- WHITE  
AKZO-NOBEL PAINT  
TRANSLUCENT ACRYLIC
- PMS 653 BLUE  
AKZO-NOBEL PAINT  
AVERY COBALT BLUE  
TRANSLUCENT VINYL
- BLACK  
AKZO-NOBEL PAINT  
3M OPAQUE VINYL
- SILVER  
ANODIZED ALUMINUM
- PMS 485 RED  
AKZO-NOBEL PAINT  
3M POPPY RED  
TRANSLUCENT VINYL



ELECTRICAL REQUIREMENTS:

ONE (1) 120 VOLT, SINGLE- PHASE  
CIRCUIT WILL BE NEEDED TO POWER  
THIS SIGN. SEE GE LED LAYOUT FOR  
THE EXACT AMPERAGE.

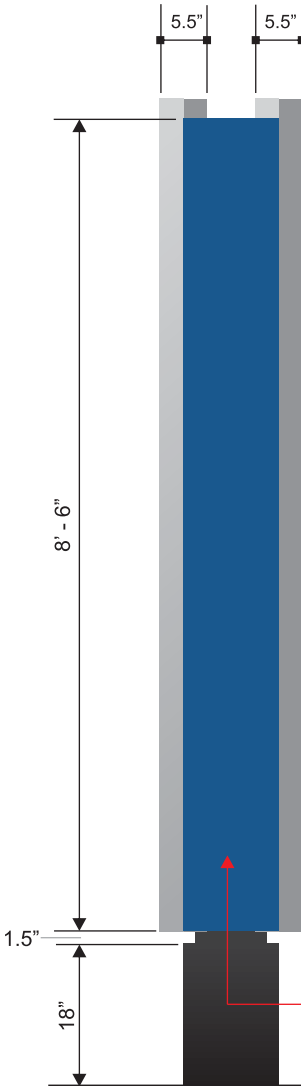
THE SIGN WILL BE WIRED INTO THE  
FACILITIES ENERGY MANAGEMENT  
SYSTEM AND WILL TURN ON AND OFF  
IN SEQUENCE WITH OTHER AREA  
LIGHTING.

GENERAL DESCRIPTION: MANUFACTURE AND INSTALL ONE (1) SINGLE-FACED MONUMENT SIGN. THE SIGN WILL HAVE AN ALL ALUMINUM INTERNAL FRAME. THE CABINET, FACES AND INSET REVEALS WILL BE CONSTRUCTED OF ALUMINUM. THE HEADER PANEL AND SUB-HEADING PANEL WILL HAVE ROUTED LOGO AND TEXT WITH 1/2" THICK PUSH THRU CLEAR ACRYLIC WITH VINYL APPLIED FIRST SURFACE. THE EMERGENCY PANEL WILL BE FLAT WHITE ACRYLIC WITH 3M POPPY RED TRANSLUCENT VINYL APPLIED FIRST SURFACE. THE EMERGENCY TEXT WILL BE THE WHITE ACRYLIC SHOWING THROUGH. INTERNAL ILLUMINATION BY GE TETRA MAX WHITE LED'S (SEE GE LED LAYOUT). ALL ALUMINUM SURFACES WILL BE PRIMED WITH AN EPOXY PRIMER AND THEN PAINTED WITH AKZO-NOBEL POLYURETHANE PAINT. THE VERTICAL BLUE BAR WILL BE LIGHTED INTERNALLY BY GE TETRA BRIGHT BLUE LED'S (SEE GE LAYOUT). THE FRONT, BACK AND LEFT END OF THE VERTICAL BLUE BAR WILL LIGHT AND WILL BE CONSTRUCTED OF CLEAR LEXAN WITH 90 DEGREE BENT EDGES. THE LEXAN BAR WILL HAVE TRANSLUCENT VINYL TO MATCH PMS 653 BLUE APPLIED FIRST SURFACE. THE SIGN WILL BE INSTALLED ON A SINGLE-STEEL POST WHICH WILL BE SET IN CONCRETE (SEE ATTACHED ENGINEERING). THE SIGN WILL MEET U. L. APPROVAL AND WILL BEAR THE REQUIRED LABELS. THE SIGN WILL HAVE AN ALL ALUMINUM BASE.

L. SIDE VIEW DETAIL

NOT TO SCALE

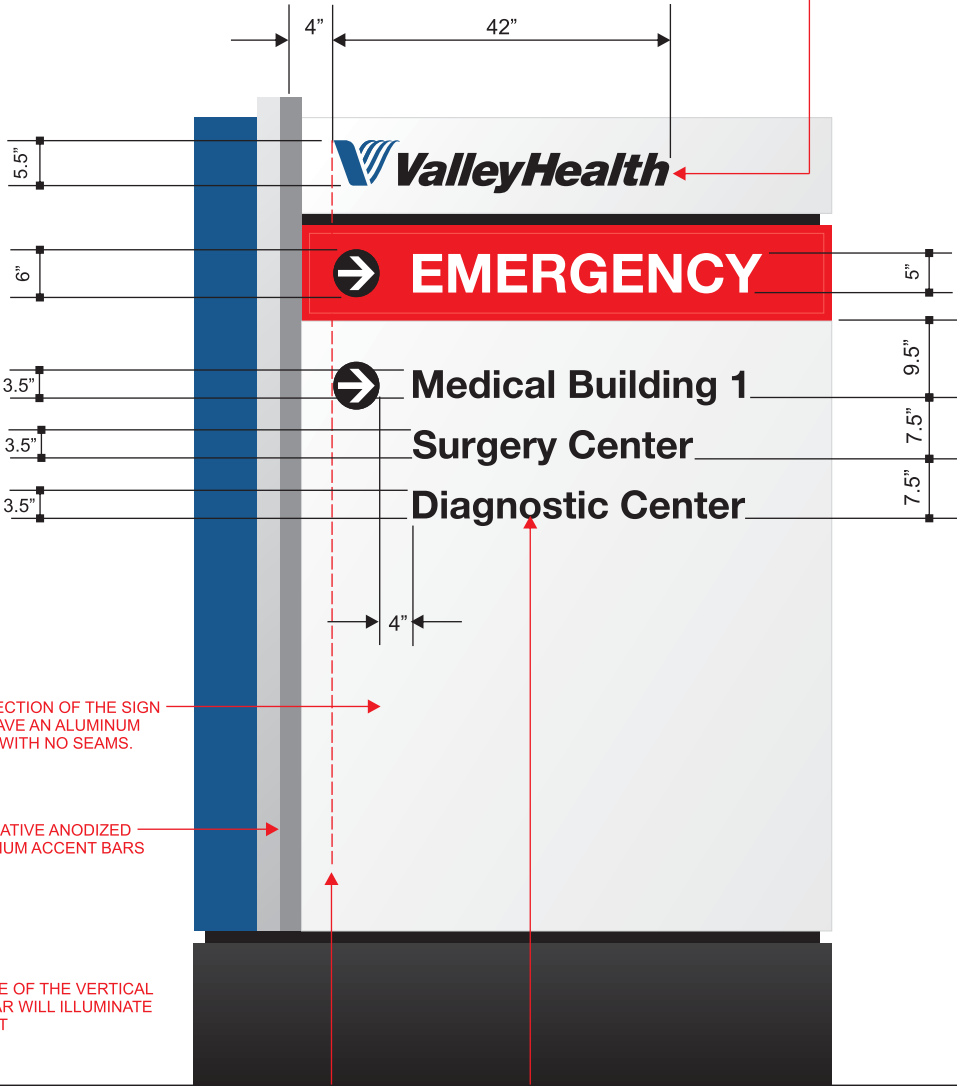
UPON ACCEPTANCE A FULL SET OF COLOR  
SAMPLES WILL BE PROVIDED FOR APPROVAL



SIDE A DETAIL

NOT TO SCALE

HEADER PANEL TO BE ALUMINUM WITH ROUTED LOGO & TEXT WITH PUSH THRU 1/2" ACRYLIC. THE EDGES WILL BE CLEAR. THE LOGO WILL HAVE PMS 653 BLUE TRANSLUCENT VINYL APPLIED TO THE 1ST SURFACE. THE TEXT WILL HAVE BLACK VINYL.



THIS SECTION OF THE SIGN  
WILL HAVE AN ALUMINUM  
FACES WITH NO SEAMS.

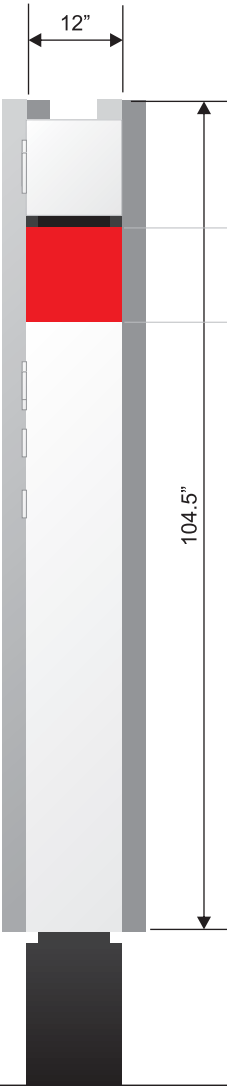
DECORATIVE ANODIZED  
ALUMINUM ACCENT BARS

THE SIDE OF THE VERTICAL  
BLUE BAR WILL ILLUMINATE  
AT NIGHT

THE VALLEYHEALTH LOGO AND THE CIRCLES  
WITH ARROWS TO BE LEFT JUSTIFIED

R. SIDE VIEW DETAIL

NOT TO SCALE

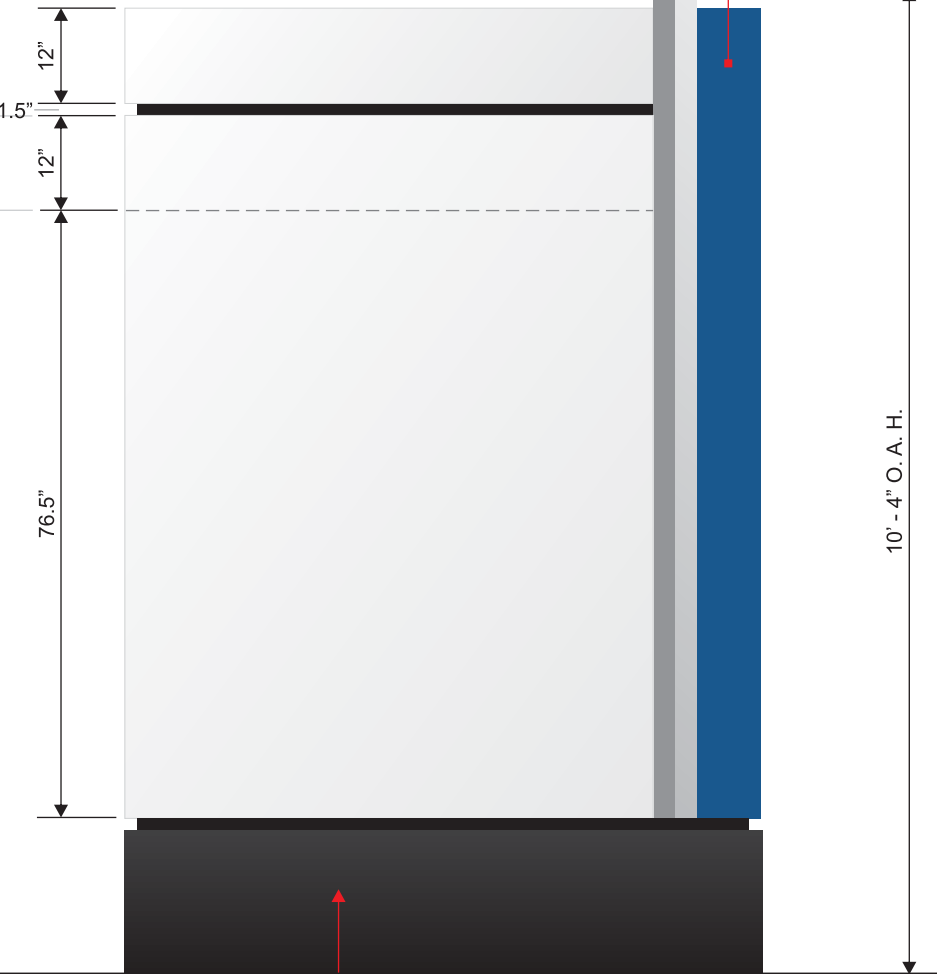


THE SUB-HAEADING PANELS TO BE ALUMINUM WITH ROUTED ARROWS & TEXT WITH PUSH THRU 1/2" ACRYLIC. THE EDGES WILL BE CLEAR. THE TEXT AND ARROW WILL HAVE OPAQUE BLACK VINYL APPLIED 1ST SURFACE.

SIDE B DETAIL

NOT TO SCALE

THE VERTICAL BLUE BAR WILL BE FLAT LEXAN WITH 90 DEGREE BENDS ON THE EDGES. THE VERTICAL BAR WILL HAVE TRANSLUCENT VINYL APPLIED FIRST SURFACE TO MATCH PMS 653 BLUE. THE VERTICAL BAR WILL BE ILLUMINATED INTERNALLY BY BRIGHT BLUE GE LED LIGHTING. THE FRONT, LEFT SIDE AND BACK WILL LIGHT AT NIGHT.



THE SIGN BASE WILL HAVE AN ALUMINUM INTERNAL  
FRAME SHEETED WITH ALUMINUM.



a company you can identify with

DATE

JANUARY 15TH, 2016

SCALE

AS INDICATED

CLIENT

VALLEY HEALTH

PROJECT

SMH CAMPUS SIGNAGE

LOCATION

WOODSTOCK, VA

DRAWING #

VH.SMH.SIGNP.06



Identity America, Inc.

Professional Building  
112 Spruce St. Spruce 4  
Bluefield, VA 24605

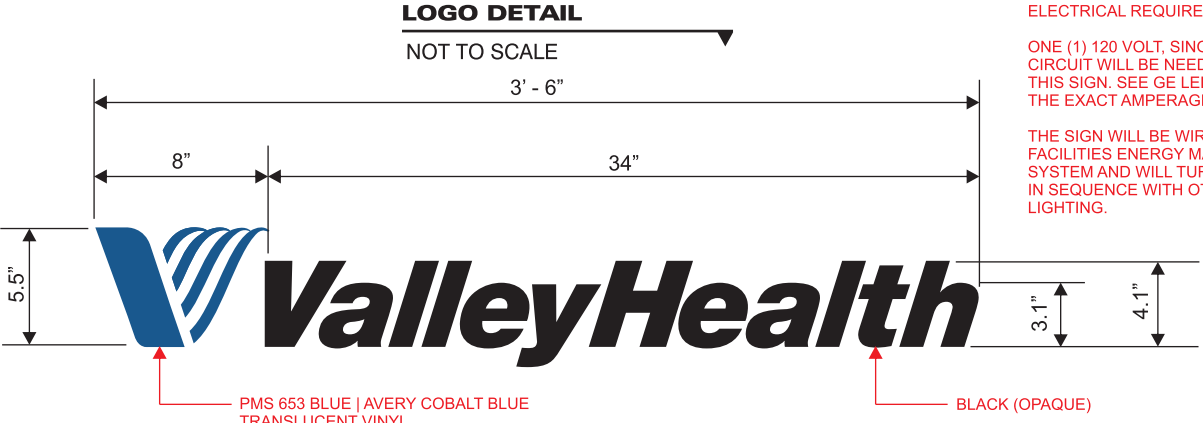
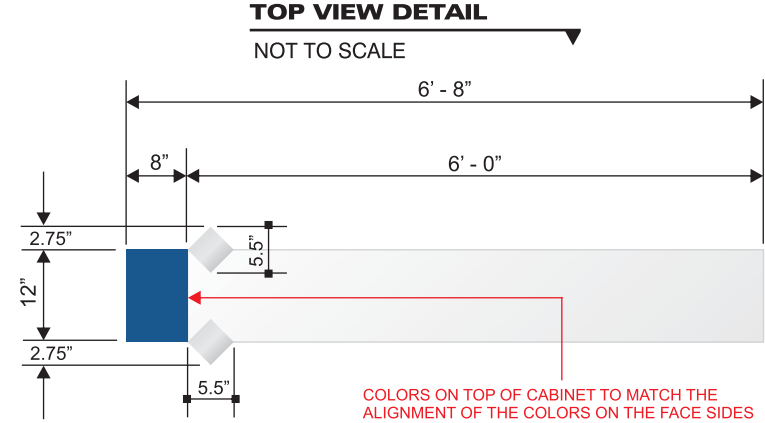
Phone: 276.322.2616

Fax: 276.322.1637

identityamerica.com

COLOR SCHEME:

- WHITE  
AKZO-NOBEL PAINT  
TRANSLUCENT ACRYLIC
- PMS 653 BLUE  
AKZO-NOBEL PAINT  
AVERY COBALT BLUE  
TRANSLUCENT VINYL
- BLACK  
AKZO-NOBEL PAINT  
3M OPAQUE VINYL
- SILVER  
ANODIZED ALUMINUM
- PMS 485 RED  
AKZO-NOBEL PAINT  
3M POPPY RED  
TRANSLUCENT VINYL



ELECTRICAL REQUIREMENTS:

ONE (1) 120 VOLT, SINGLE- PHASE  
CIRCUIT WILL BE NEEDED TO POWER  
THIS SIGN. SEE GE LED LAYOUT FOR  
THE EXACT AMPERAGE.

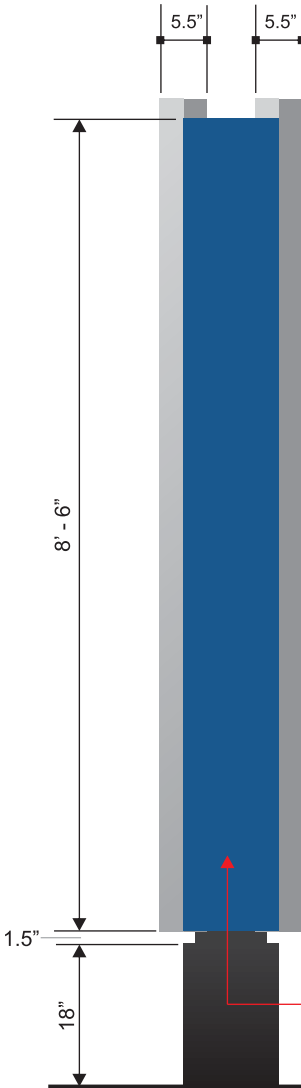
THE SIGN WILL BE WIRED INTO THE  
FACILITIES ENERGY MANAGEMENT  
SYSTEM AND WILL TURN ON AND OFF  
IN SEQUENCE WITH OTHER AREA  
LIGHTING.

GENERAL DESCRIPTION: MANUFACTURE AND INSTALL ONE (1) DOUBLE-FACED MONUMENT SIGN. THE SIGN WILL HAVE AN ALL ALUMINUM INTERNAL FRAME. THE CABINET, FACES AND INSET REVEALS WILL BE CON-  
STRUCTED OF ALUMINUM. THE HEADER PANEL AND SUB-HEADING PANEL WILL HAVE ROUTED LOGO AND TEXT WITH 1/2" THICK PUSH THRU CLEAR ACRYLIC WITH VINYL APPLIED FIRST SURFACE. THE EMERGENCY  
PANEL WILL BE FLAT WHITE ACRYLIC WITH 3M POPPY RED TRANSLUCENT VINYL APPLIED FIRST SURFACE. THE EMERGENCY TEXT WILL BE THE WHITE ACRYLIC SHOWING THROUGH. INTERNAL ILLUMINATION BY GE  
TETRA MAX WHITE LED'S (SEE GE LED LAYOUT). ALL ALUMINUM SURFACES WILL BE PRIMED WITH AN EPOXY PRIMER AND THEN PAINTED WITH AKZO-NOBEL POLYURETHANE PAINT. THE VERTICAL BLUE BAR WILL  
BE LIGHTED INTERNALLY BY GE TETRA BRIGHT BLUE LED'S (SEE GE LAYOUT). THE FRONT, BACK AND LEFT END OF THE VERTICAL BLUE BAR WILL LIGHT AND WILL BE CONSTRUCTED OF CLEAR LEXAN WITH 90  
DEGREE BENT EDGES. THE LEXAN BAR WILL HAVE TRANSLUCENT VINYL TO MATCH PMS 653 BLUE APPLIED FIRST SURFACE. THE SIGN WILL BE INSTALLED ON A SINGLE-STEEL POST WHICH WILL BE SET IN  
CONCRETE (SEE ATTACHED ENGINEERING). THE SIGN WILL MEET U. L. APPROVAL AND WILL BEAR THE REQUIRED LABELS. THE SIGN WILL HAVE AN ALL ALUMINUM BASE.

L. SIDE VIEW DETAIL

NOT TO SCALE

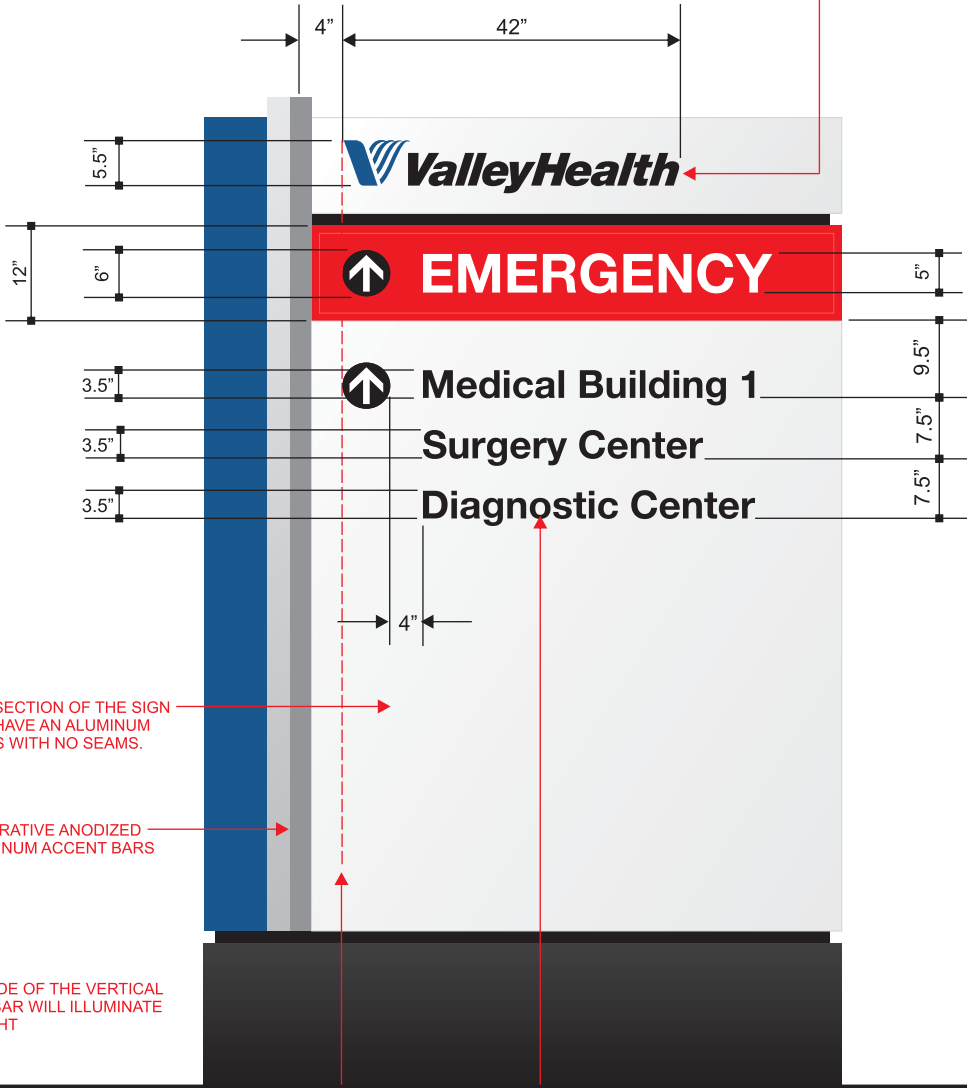
UPON ACCEPTANCE A FULL SET OF COLOR  
SAMPLES WILL BE PROVIDED FOR APPROVAL



SIDE B DETAIL

NOT TO SCALE

HEADER PANELS TO BE ALUMINUM WITH ROUTED LOGO & TEXT WITH PUSH THRU 1/2" ACRYLIC. THE EDGES WILL BE CLEAR.  
THE LOGO WILL HAVE PMS 653 BLUE TRANSLUCENT VINYL APPLIED TO THE 1ST SURFACE. THE TEXT WILL HAVE BLACK VINYL.



THIS SECTION OF THE SIGN  
WILL HAVE AN ALUMINUM  
FACES WITH NO SEAMS.

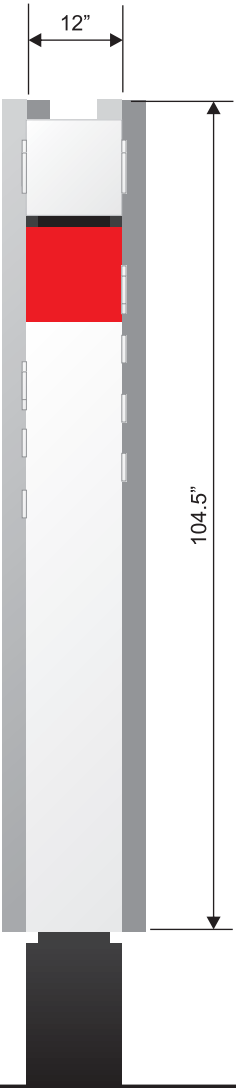
DECORATIVE ANODIZED  
ALUMINUM ACCENT BARS

THE SIDE OF THE VERTICAL  
BLUE BAR WILL ILLUMINATE  
AT NIGHT

THE VALLEYHEALTH LOGO AND THE CIRCLES  
WITH ARROWS TO BE LEFT JUSTIFIED

R. SIDE VIEW DETAIL

NOT TO SCALE

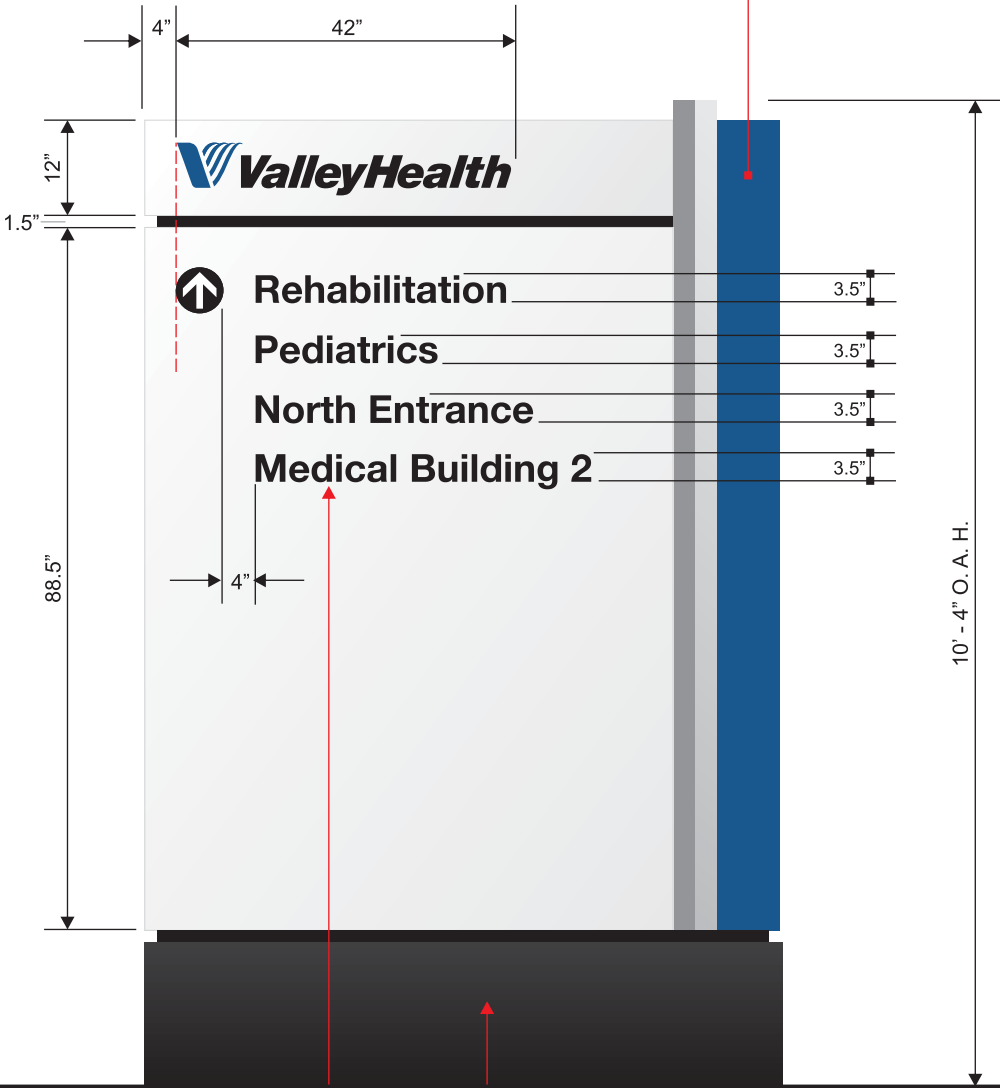


THE SUB-HAEADING PANELS TO BE ALUMINUM WITH ROUTED ARROWS & TEXT WITH PUSH THRU 1/2" ACRYLIC.  
THE EDGES WILL BE CLEAR. THE TEXT AND ARROW WILL HAVE OPAQUE BLACK VINYL APPLIED 1ST SURFACE.

SIDE A DETAIL

NOT TO SCALE

THE VERTICAL BLUE BAR WILL BE FLAT LEXAN WITH 90 DEGREE BENDS ON THE EDGES. THE VERTICAL BAR WILL  
HAVE TRANSLUCENT VINYL APPLIED FIRST SURFACE TO MATCH PMS 653 BLUE. THE VERTICAL BAR WILL BE ILLUM-  
INATED INTERNALLY BY BRIGHT BLUE GE LED LIGHTING. THE FRONT, LEFT SIDE AND BACK WILL LIGHT AT NIGHT.



THE SIGN BASE WILL HAVE AN ALUMINUM INTERNAL  
FRAME SHEETED WITH ALUMINUM.



a company you can identify with

DATE

NOVEMBER 18TH, 2016

SCALE

AS INDICATED

CLIENT

VALLEY HEALTH

PROJECT

SMH CAMPUS SIGNAGE

LOCATION

WOODSTOCK, VA

DRAWING #

VH.SMH.SIGNR.07



Identity America, Inc.

Professional Building  
112 Spruce St. Spruce 4  
Bluefield, VA 24605

Phone: 276.322.2616  
Fax: 276.322.1637

identityamerica.com

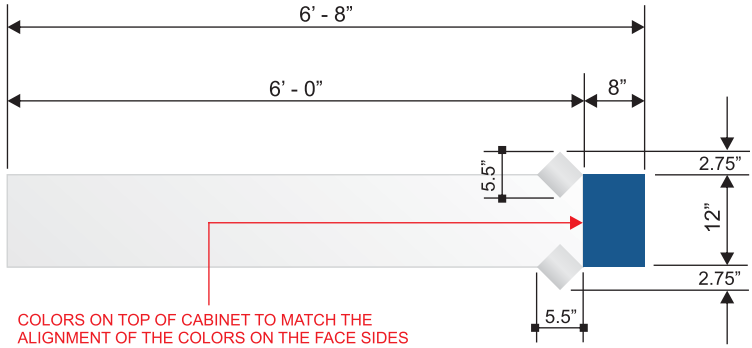


COLOR SCHEME:

- WHITE  
AKZO-NOBEL PAINT  
TRANSLUCENT ACRYLIC
- PMS 653 BLUE  
AKZO-NOBEL PAINT  
AVERY COBALT BLUE  
TRANSLUCENT VINYL
- BLACK  
AKZO-NOBEL PAINT  
3M OPAQUE VINYL
- SILVER  
ANODIZED ALUMINUM
- PMS 485 RED  
AKZO-NOBEL PAINT  
3M POPPY RED  
TRANSLUCENT VINYL

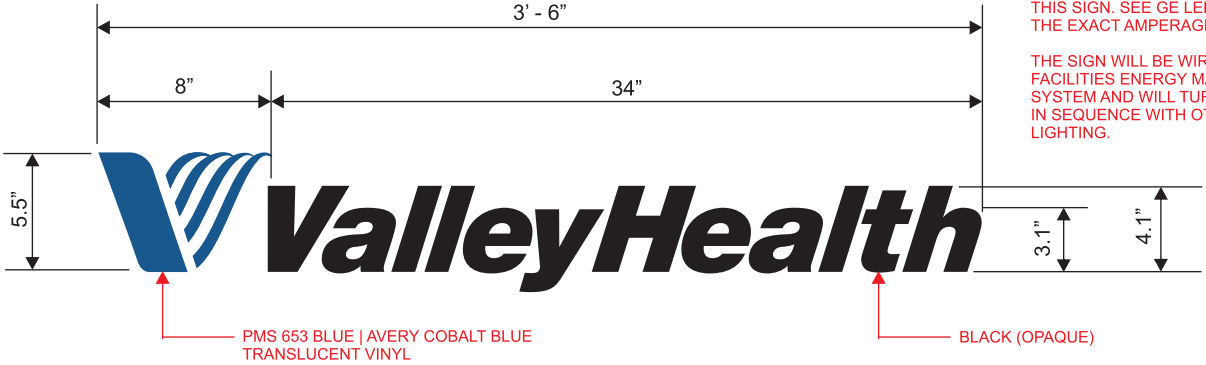
TOP VIEW DETAIL

NOT TO SCALE



LOGO DETAIL

NOT TO SCALE



ELECTRICAL REQUIREMENTS:

ONE (1) 120 VOLT, SINGLE- PHASE  
CIRCUIT WILL BE NEEDED TO POWER  
THIS SIGN. SEE GE LED LAYOUT FOR  
THE EXACT AMPERAGE.

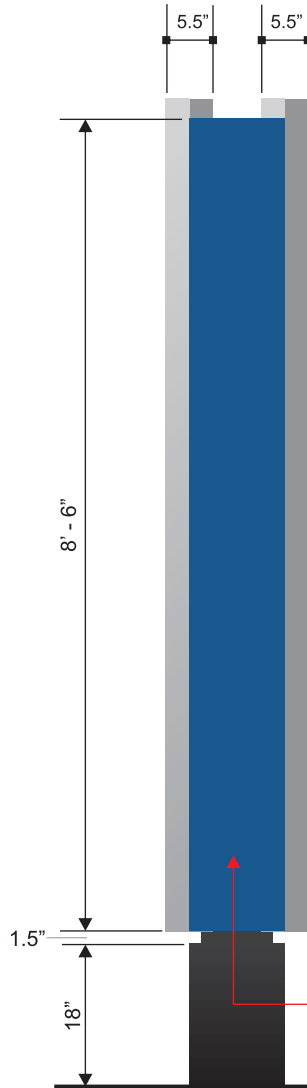
THE SIGN WILL BE WIRED INTO THE  
FACILITIES ENERGY MANAGEMENT  
SYSTEM AND WILL TURN ON AND OFF  
IN SEQUENCE WITH OTHER AREA  
LIGHTING.

GENERAL DESCRIPTION: MANUFACTURE AND INSTALL ONE (1) SINGLE-FACED MONUMENT SIGN. THE SIGN WILL HAVE AN ALL ALUMINUM INTERNAL FRAME. THE CABINET, FACES AND INSET REVEALS WILL BE CONSTRUCTED OF ALUMINUM. THE HEADER PANEL AND SUB-HEADING PANEL WILL HAVE ROUTED LOGO AND TEXT WITH 1/2" THICK PUSH THRU CLEAR ACRYLIC WITH VINYL APPLIED FIRST SURFACE. THE EMERGENCY PANEL WILL BE FLAT WHITE ACRYLIC WITH 3M POPPY RED TRANSLUCENT VINYL APPLIED FIRST SURFACE. THE EMERGENCY TEXT WILL BE THE WHITE ACRYLIC SHOWING THROUGH. INTERNAL ILLUMINATION BY GE TETRA MAX WHITE LED'S (SEE GE LED LAYOUT). ALL ALUMINUM SURFACES WILL BE PRIMED WITH AN EPOXY PRIMER AND THEN PAINTED WITH AKZO-NOBEL POLYURETHANE PAINT. THE VERTICAL BLUE BAR WILL BE LIGHTED INTERNALLY BY GE TETRA BRIGHT BLUE LED'S (SEE GE LAYOUT). THE FRONT, BACK AND LEFT END OF THE VERTICAL BLUE BAR WILL LIGHT AND WILL BE CONSTRUCTED OF CLEAR LEXAN WITH 90 DEGREE BENT EDGES. THE LEXAN BAR WILL HAVE TRANSLUCENT VINYL TO MATCH PMS 653 BLUE APPLIED FIRST SURFACE. THE SIGN WILL BE INSTALLED ON A SINGLE-STEEL POST WHICH WILL BE SET IN CONCRETE (SEE ATTACHED ENGINEERING). THE SIGN WILL MEET U. L. APPROVAL AND WILL BEAR THE REQUIRED LABELS. THE SIGN WILL HAVE AN ALL ALUMINUM BASE.

R. SIDE VIEW DETAIL

NOT TO SCALE

UPON ACCEPTANCE A FULL SET OF COLOR  
SAMPLES WILL BE PROVIDED FOR APPROVAL



SIDE A DETAIL

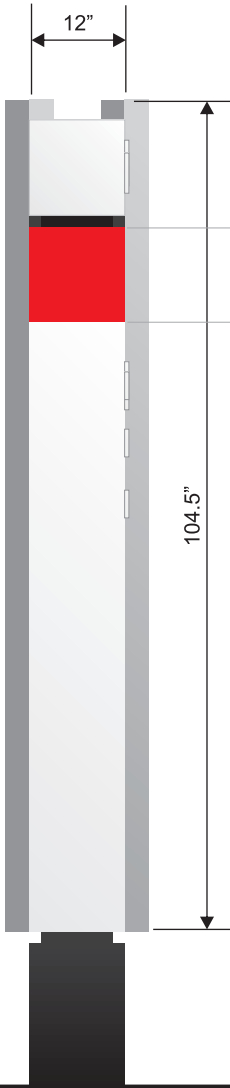
NOT TO SCALE

HEADER PANELS TO BE ALUMINUM WITH ROUTED LOGO & TEXT WITH PUSH THRU 1/2" ACRYLIC. THE EDGES WILL BE CLEAR. THE LOGO WILL HAVE PMS 653 BLUE TRANSLUCENT VINYL APPLIED TO THE 1ST SURFACE. THE TEXT WILL HAVE BLACK VINYL.



L. SIDE VIEW DETAIL

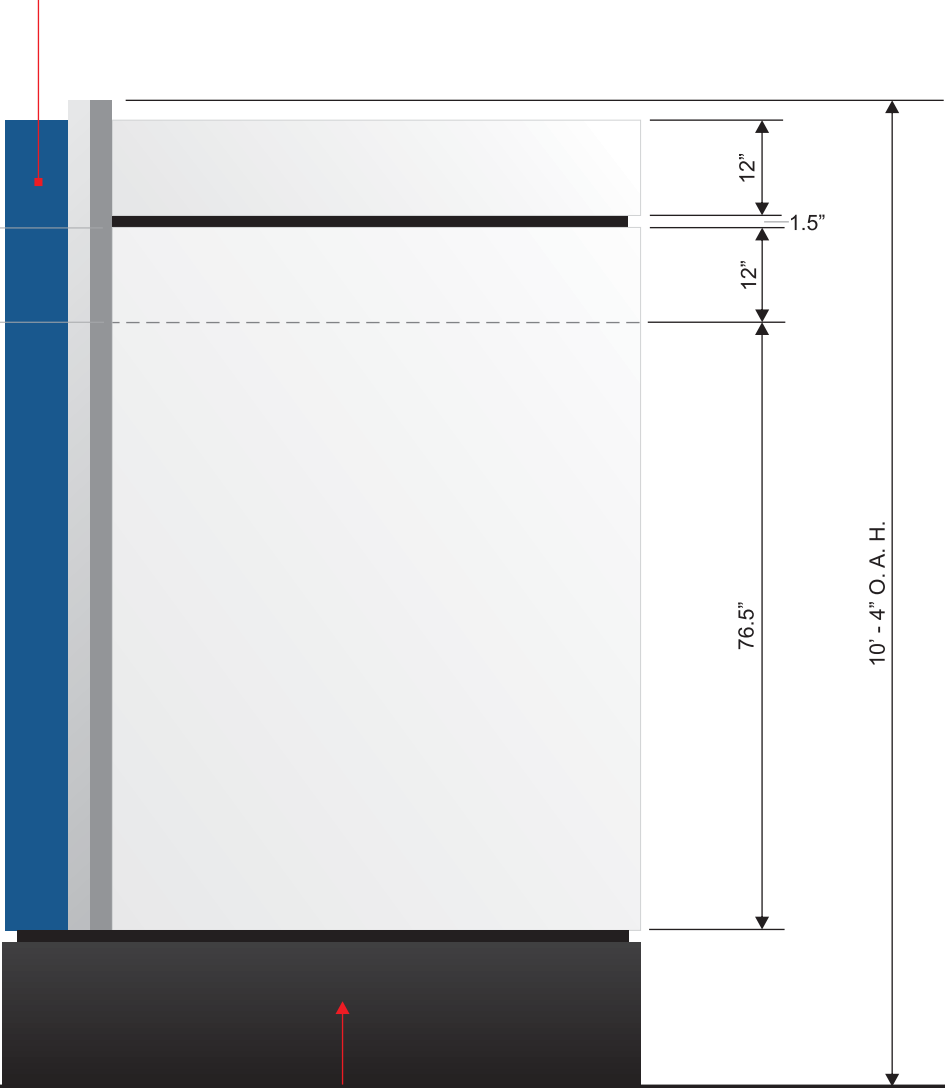
NOT TO SCALE



SIDE B DETAIL

NOT TO SCALE

THE VERTICAL BLUE BAR WILL BE FLAT LEXAN WITH 90 DEGREE BENDS ON THE EDGES. THE VERTICAL BAR WILL HAVE TRANSLUCENT VINYL APPLIED FIRST SURFACE TO MATCH PMS 653 BLUE. THE VERTICAL BAR WILL BE ILLUMINATED INTERNALLY BY BRIGHT BLUE GE LED LIGHTING. THE FRONT, LEFT SIDE AND BACK WILL LIGHT AT NIGHT.



a company you can identify with

DATE

JANUARY 15TH, 2016

SCALE

AS INDICATED

CLIENT

VALLEY HEALTH

PROJECT

SMH CAMPUS SIGNAGE

LOCATION

WOODSTOCK, VA

DRAWING #

VH.SMH.SIGNT.08



Identity America, Inc.

Professional Building  
112 Spruce St. Spruce 4  
Bluefield, VA 24605

Phone: 276.322.2616  
Fax: 276.322.1637

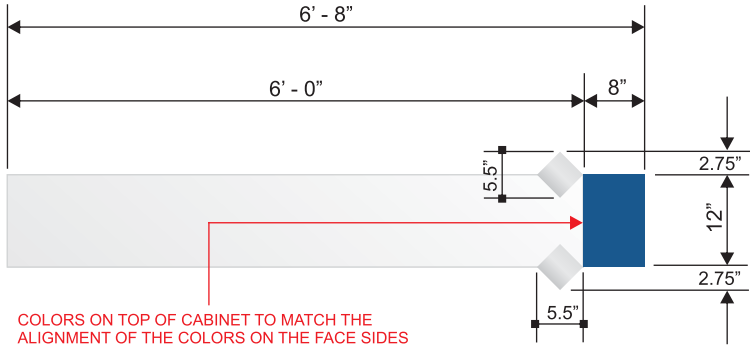
identityamerica.com

COLOR SCHEME:

- WHITE  
AKZO-NOBEL PAINT  
TRANSLUCENT ACRYLIC
- PMS 653 BLUE  
AKZO-NOBEL PAINT  
AVERY COBALT BLUE  
TRANSLUCENT VINYL
- BLACK  
AKZO-NOBEL PAINT  
3M OPAQUE VINYL
- SILVER  
ANODIZED ALUMINUM
- PMS 485 RED  
AKZO-NOBEL PAINT  
3M POPPY RED  
TRANSLUCENT VINYL

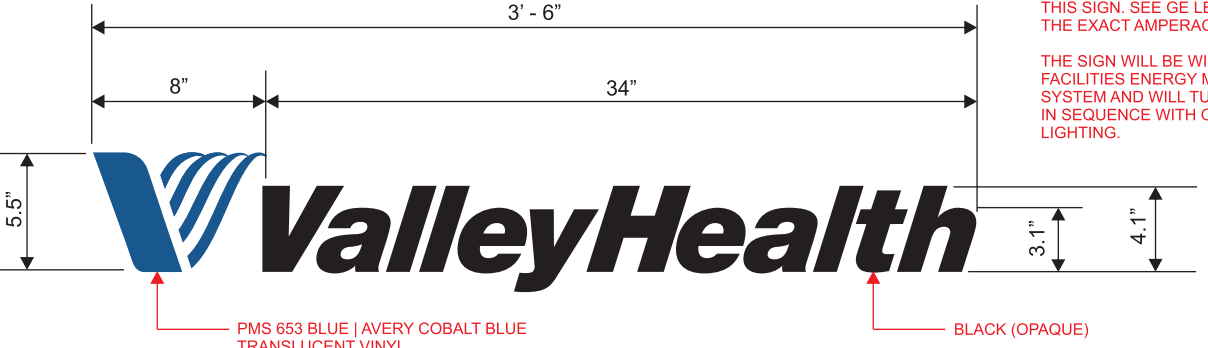
TOP VIEW DETAIL

NOT TO SCALE



LOGO DETAIL

NOT TO SCALE



ELECTRICAL REQUIREMENTS:

ONE (1) 120 VOLT, SINGLE- PHASE  
CIRCUIT WILL BE NEEDED TO POWER  
THIS SIGN. SEE GE LED LAYOUT FOR  
THE EXACT AMPERAGE.

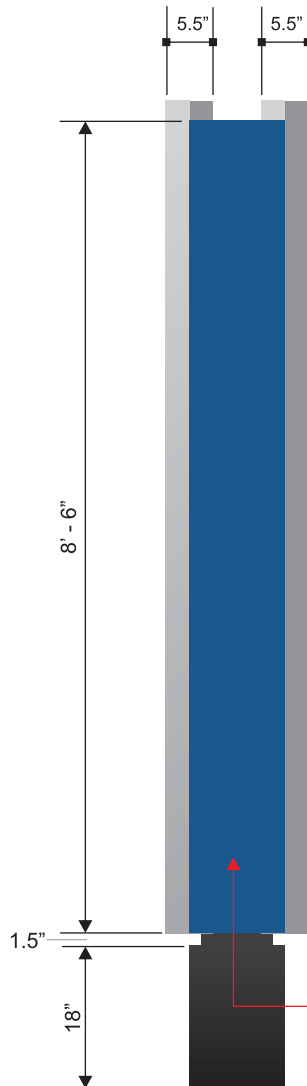
THE SIGN WILL BE WIRED INTO THE  
FACILITIES ENERGY MANAGEMENT  
SYSTEM AND WILL TURN ON AND OFF  
IN SEQUENCE WITH OTHER AREA  
LIGHTING.

GENERAL DESCRIPTION: MANUFACTURE AND INSTALL ONE (1) DOUBLE-FACED MONUMENT SIGN. THE SIGN WILL HAVE AN ALL ALUMINUM INTERNAL FRAME. THE CABINET, FACES AND INSET REVEALS WILL BE CON-  
STRUCTED OF ALUMINUM. THE HEADER PANEL AND SUB-HEADING PANEL WILL HAVE ROUTED LOGO AND TEXT WITH 1/2" THICK PUSH THRU CLEAR ACRYLIC WITH VINYL APPLIED FIRST SURFACE. THE EMERGENCY  
PANEL WILL BE FLAT WHITE ACRYLIC WITH 3M POPPY RED TRANSLUCENT VINYL APPLIED FIRST SURFACE. THE EMERGENCY TEXT WILL BE THE WHITE ACRYLIC SHOWING THROUGH. INTERNAL ILLUMINATION BY GE  
TETRA MAX WHITE LED'S (SEE GE LED LAYOUT). ALL ALUMINUM SURFACES WILL BE PRIMED WITH AN EPOXY PRIMER AND THEN PAINTED WITH AKZO-NOBEL POLYURETHANE PAINT. THE VERTICAL BLUE BAR WILL  
BE LIGHTED INTERNALLY BY GE TETRA BRIGHT BLUE LED'S (SEE GE LAYOUT). THE FRONT, BACK AND LEFT END OF THE VERTICAL BLUE BAR WILL LIGHT AND WILL BE CONSTRUCTED OF CLEAR LEXAN WITH 90  
DEGREE BENT EDGES. THE LEXAN BAR WILL HAVE TRANSLUCENT VINYL TO MATCH PMS 653 BLUE APPLIED FIRST SURFACE. THE SIGN WILL BE INSTALLED ON A SINGLE-STEEL POST WHICH WILL BE SET IN  
CONCRETE (SEE ATTACHED ENGINEERING). THE SIGN WILL MEET U. L. APPROVAL AND WILL BEAR THE REQUIRED LABELS. THE SIGN WILL HAVE AN ALL ALUMINUM BASE.

R. SIDE VIEW DETAIL

NOT TO SCALE

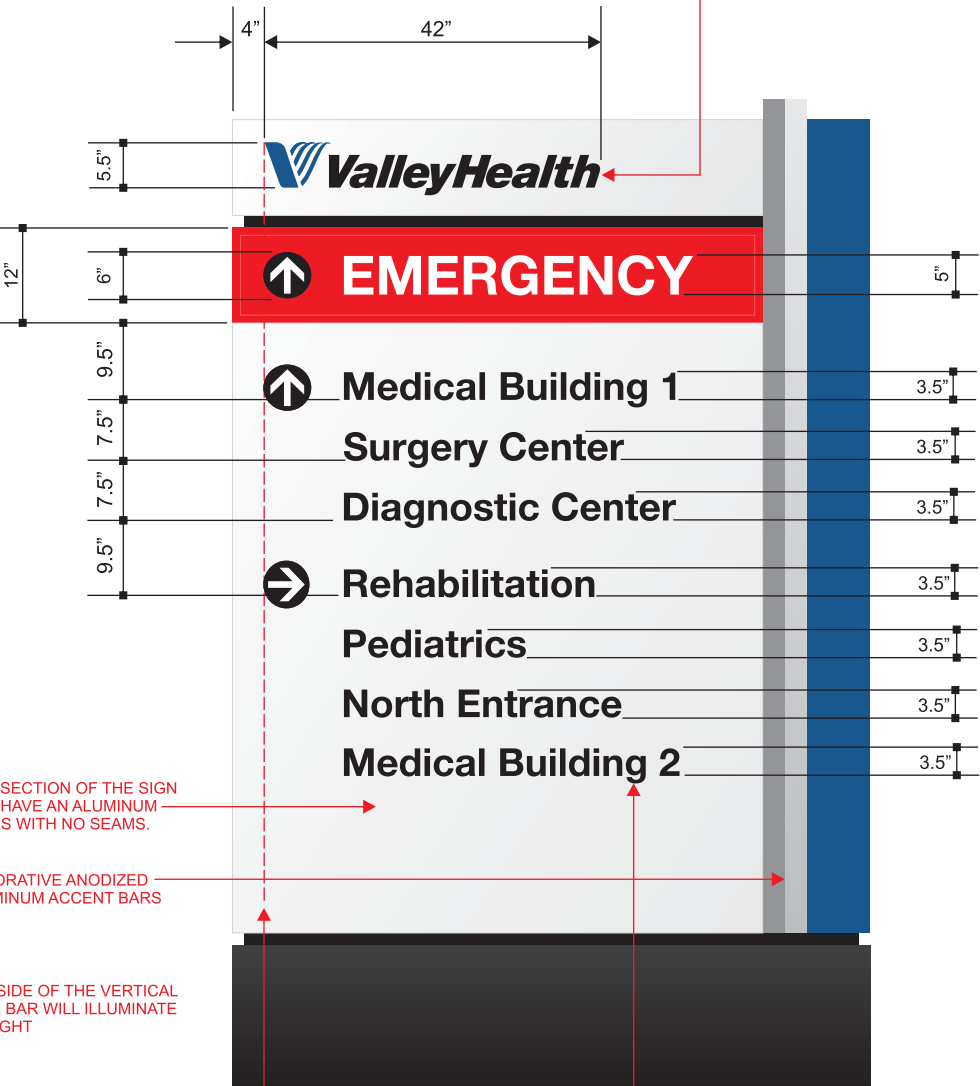
UPON ACCEPTANCE A FULL SET OF COLOR  
SAMPLES WILL BE PROVIDED FOR APPROVAL



SIDE A DETAIL

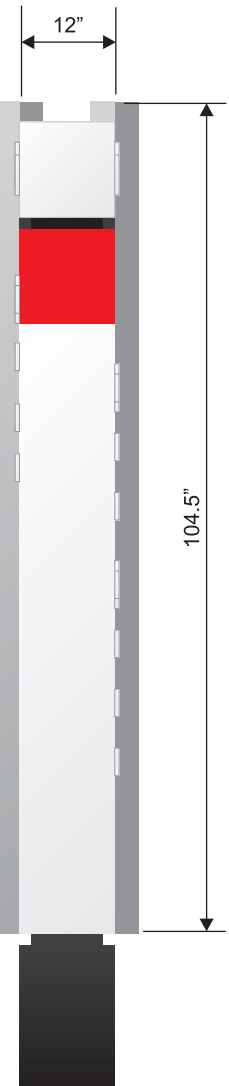
NOT TO SCALE

HEADER PANELS TO BE ALUMINUM WITH ROUTED LOGO & TEXT WITH PUSH THRU 1/2" ACRYLIC. THE EDGES WILL BE CLEAR.  
THE LOGO WILL HAVE PMS 653 BLUE TRANSLUCENT VINYL APPLIED TO THE 1ST SURFACE. THE TEXT WILL HAVE BLACK VINYL.



L. SIDE VIEW DETAIL

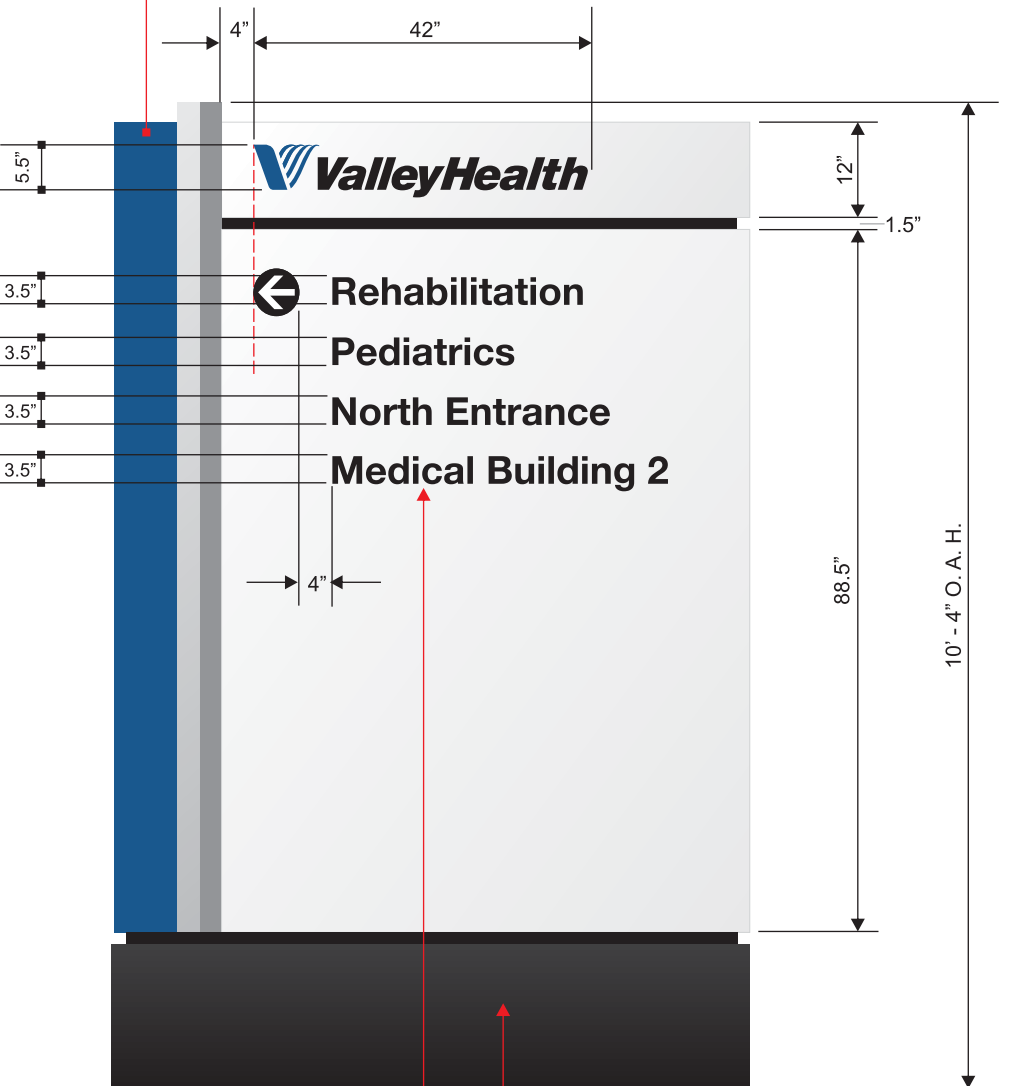
NOT TO SCALE



SIDE B DETAIL

NOT TO SCALE

THE VERTICAL BLUE BAR WILL BE FLAT LEXAN WITH 90 DEGREE BENDS ON THE EDGES. THE VERTICAL BAR WILL  
HAVE TRANSLUCENT VINYL APPLIED FIRST SURFACE TO MATCH PMS 653 BLUE. THE VERTICAL BAR WILL BE ILLUM-  
INATED INTERNALLY BY BRIGHT BLUE GE LED LIGHTING. THE FRONT, LEFT SIDE AND BACK WILL LIGHT AT NIGHT.



a company you can identify with

DATE

JANUARY 15TH, 2016

SCALE

AS INDICATED

CLIENT

VALLEY HEALTH

PROJECT

SMH CAMPUS SIGNAGE

LOCATION

WOODSTOCK, VA

DRAWING #

VH.SMH.SIGNU.09



Identity America, Inc.  
Professional Building  
112 Spruce St. Spruce 4  
Bluefield, VA 24605

Phone: 276.322.2616  
Fax: 276.322.1637

identityamerica.com

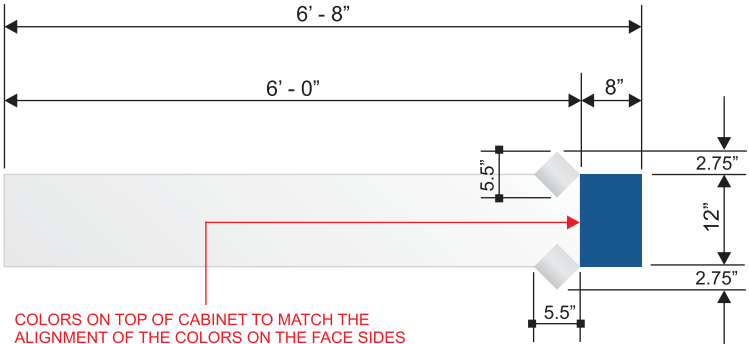


COLOR SCHEME:

- WHITE  
AKZO-NOBEL PAINT  
TRANSLUCENT ACRYLIC
- PMS 653 BLUE  
AKZO-NOBEL PAINT  
AVERY COBALT BLUE  
TRANSLUCENT VINYL
- BLACK  
AKZO-NOBEL PAINT  
3M OPAQUE VINYL
- SILVER  
ANODIZED ALUMINUM

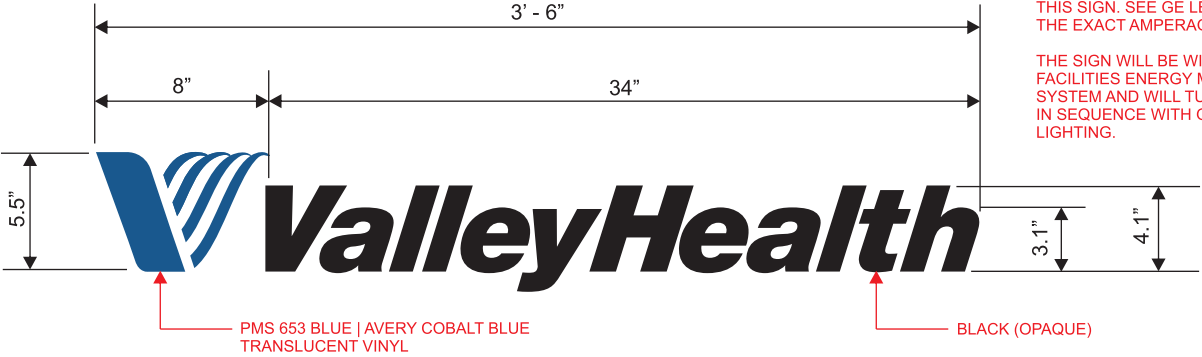
TOP VIEW DETAIL

NOT TO SCALE



LOGO DETAIL

NOT TO SCALE



ELECTRICAL REQUIREMENTS:

ONE (1) 120 VOLT, SINGLE- PHASE  
CIRCUIT WILL BE NEEDED TO POWER  
THIS SIGN. SEE GE LED LAYOUT FOR  
THE EXACT AMPERAGE.

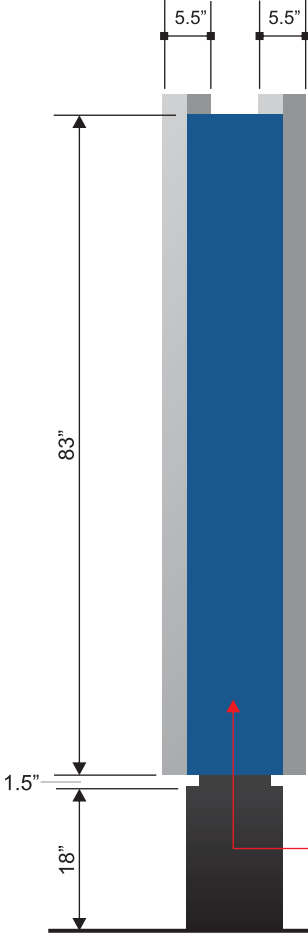
THE SIGN WILL BE WIRED INTO THE  
FACILITIES ENERGY MANAGEMENT  
SYSTEM AND WILL TURN ON AND OFF  
IN SEQUENCE WITH OTHER AREA  
LIGHTING.

GENERAL DESCRIPTION: MANUFACTURE AND INSTALL ONE (1) DOUBLE-FACED MONUMENT SIGN. THE SIGN WILL HAVE AN ALL ALUMINUM INTERNAL FRAME. THE CABINET, FACES AND INSET REVEALS WILL BE CON-  
STRUCTED OF ALUMINUM. THE HEADER PANEL AND SUB-HEADING PANEL WILL HAVE ROUTED LOGO AND TEXT WITH 1/2" THICK PUSH THRU CLEAR ACRYLIC WITH VINYL APPLIED FIRST SURFACE. INTERNAL ILLU-  
INATION BY GE TETRA MAX WHITE LED'S (SEE GE LED LAYOUT). ALL ALUMINUM SURFACES WILL BE PRIMED WITH AN EPOXY PRIMER AND THEN PAINTED WITH AKZO-NOBEL POLYURETHANE PAINT. THE VERTICAL  
BLUE BAR WILL BE LIGHTED INTERNALLY BY GE TETRA BRIGHT BLUE LED'S (SEE GE LAYOUT). THE FRONT, BACK AND LEFT END OF THE VERTICAL BLUE BAR WILL LIGHT AND WILL BE CONSTRUCTED OF CLEAR  
LEXAN WITH 90 DEGREE BENT EDGES. THE LEXAN BAR WILL HAVE TRANSLUCENT VINYL TO MATCH PMS 653 BLUE APPLIED FIRST SURFACE. THE SIGN WILL BE INSTALLED ON A SINGLE-STEEL POST WHICH WILL  
BE SET IN CONCRETE (SEE ATTACHED ENGINEERING). THE SIGN WILL MEET U. L. APPROVAL AND WILL BEAR THE REQUIRED LABELS. THE SIGN WILL HAVE AN ALL ALUMINUM BASE.

R. SIDE VIEW DETAIL

NOT TO SCALE

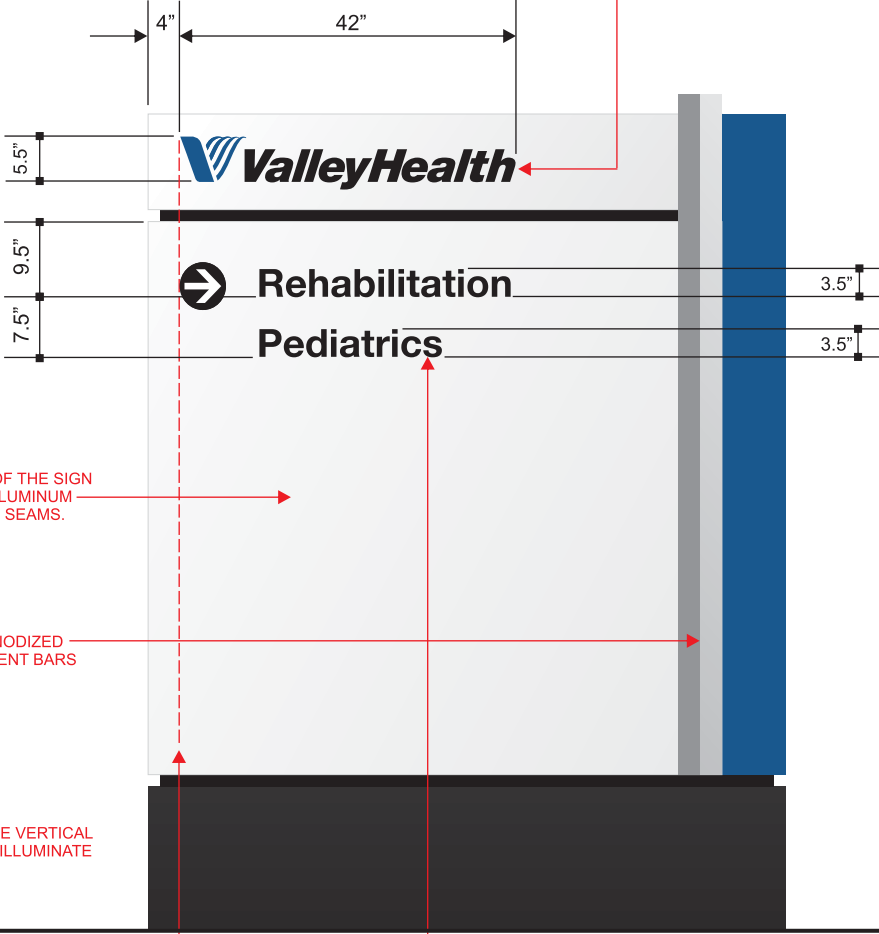
UPON ACCEPTANCE A FULL SET OF COLOR  
SAMPLES WILL BE PROVIDED FOR APPROVAL



SIDE A DETAIL

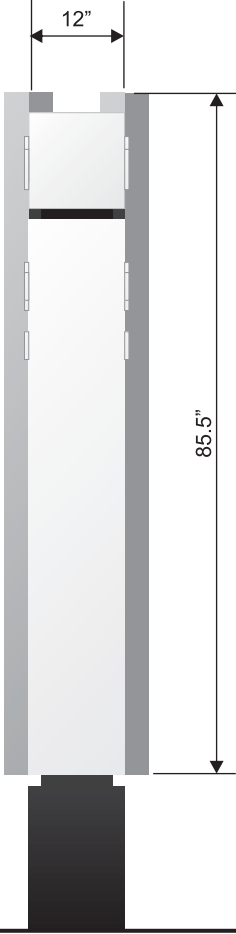
NOT TO SCALE

HEADER PANELS TO BE ALUMINUM WITH ROUTED LOGO & TEXT WITH PUSH THRU 1/2" ACRYLIC. THE EDGES WILL BE CLEAR.  
THE LOGO WILL HAVE PMS 653 BLUE TRANSLUCENT VINYL APPLIED TO THE 1ST SURFACE. THE TEXT WILL HAVE BLACK VINYL.



L. SIDE VIEW DETAIL

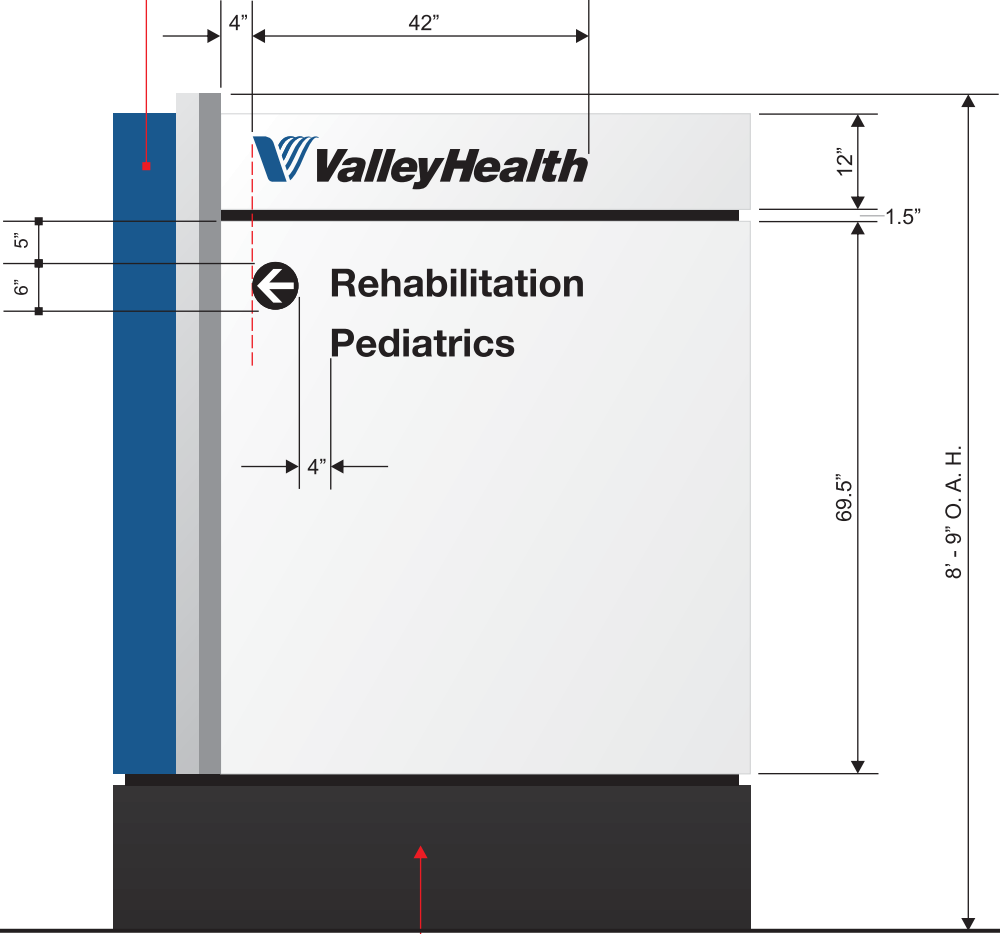
NOT TO SCALE



SIDE B DETAIL

NOT TO SCALE

THE VERTICAL BLUE BAR WILL BE FLAT LEXAN WITH 90 DEGREE BENDS ON THE EDGES. THE VERTICAL BAR WILL  
HAVE TRANSLUCENT VINYL APPLIED FIRST SURFACE TO MATCH PMS 653 BLUE. THE VERTICAL BAR WILL BE ILLU-  
MINATED INTERNALLY BY BRIGHT BLUE GE LED LIGHTING. THE FRONT, LEFT SIDE AND BACK WILL LIGHT AT NIGHT.



THE VALLEYHEALTH LOGO AND THE CIRCLES  
WITH ARROWS TO BE LEFT JUSTIFIED

THE SUB-HEADING PANELS TO BE ALUMINUM WITH ROUTED ARROWS & TEXT WITH PUSH THRU 1/2" ACRYLIC.  
THE EDGES WILL BE CLEAR. THE TEXT AND ARROW WILL HAVE OPAQUE BLACK VINYL APPLIED 1ST SURFACE.

THE SIGN BASE WILL HAVE AN ALUMINUM INTERNAL  
FRAME SHEETED WITH ALUMINUM.



a company you can identify with

DATE

JANUARY 16TH, 2016

SCALE

AS INDICATED

CLIENT

VALLEY HEALTH

PROJECT

SMH CAMPUS SIGNAGE

LOCATION

WOODSTOCK, VA

DRAWING #

VH.SMH.SIGNV.10



**Identity America, Inc.**  
Professional Building  
112 Spruce St. Spruce 4  
Bluefield, VA 24605

Phone: 276.322.2616  
Fax: 276.322.1637

[identityamerica.com](http://identityamerica.com)

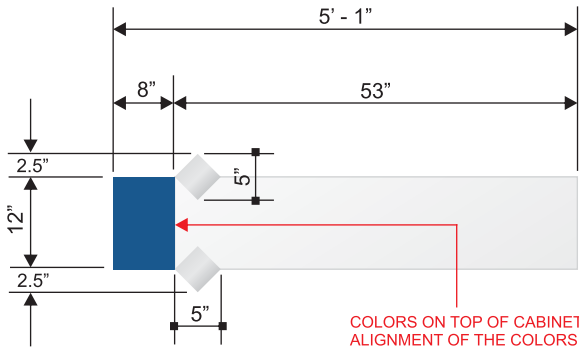
COLOR SCHEME:

- WHITE  
AKZO-NOBEL PAINT
- PMS 653 BLUE  
AKZO-NOBEL PAINT  
AVERY COBALT BLUE  
TRANSLUCENT VINYL
- BLACK  
AKZO-NOBEL PAINT  
3M OPAQUE VINYL
- SILVER  
ANODIZED ALUMINUM

UPON ACCEPTANCE A FULL SET OF COLOR  
SAMPLES WILL BE PROVIDED FOR APPROVAL

TOP VIEW DETAIL

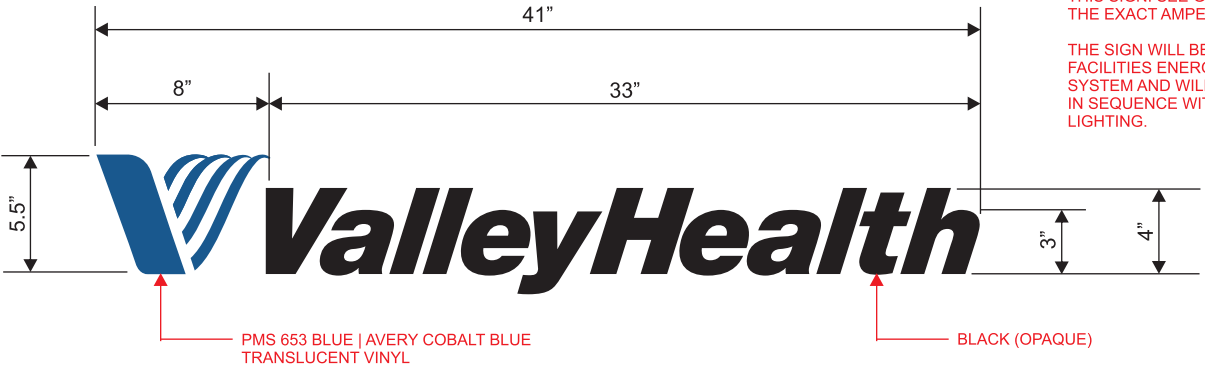
NOT TO SCALE



COLORS ON TOP OF CABINET TO MATCH THE  
ALIGNMENT OF THE COLORS ON THE FACE SIDES

LOGO DETAIL

NOT TO SCALE



ELECTRICAL REQUIREMENTS:

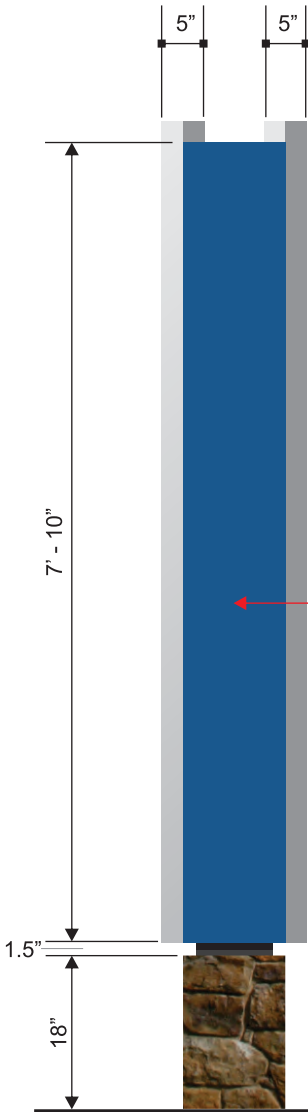
ONE (1) 120 VOLT, SINGLE- PHASE  
CIRCUIT WILL BE NEEDED TO POWER  
THIS SIGN. SEE GE LED LAYOUT FOR  
THE EXACT AMPERAGE.

THE SIGN WILL BE WIRED INTO THE  
FACILITIES ENERGY MANAGEMENT  
SYSTEM AND WILL TURN ON AND OFF  
IN SEQUENCE WITH OTHER AREA  
LIGHTING.

GENERAL DESCRIPTION: MANUFACTURE AND INSTALL ONE (1) SINGLE-FACED MONUMENT SIGN. THE SIGN WILL HAVE AN ALL ALUMINUM INTERNAL FRAME. THE CABINET, FACES AND INSET REVEALS WILL BE CONSTRUCTED OF ALUMINUM. THE HEADER PANEL WILL HAVE ROUTED LOGO AND TEXT WITH 1/2" THICK PUSH THRU CLEAR ACRYLIC WITH 3M VINYL APPLIED FIRST SURFACE. THE SUBHEADING TEXT PANELS WILL BE ALUMINUM WITH ROUTED TEXT WITH 1/2" THICK PUSH THRU CLEAR ACRYLIC WITH OPAQUE BLACK VINYL APPLIED FIRST SURFACE. INTERNAL ILLUMINATION BY GE TETRA MAX WHITE LED'S (SEE GE LED LAYOUT). ALL ALUMINUM SURFACES WILL BE PRIMED WITH AN EPOXY PRIMER AND THEN PAINTED WITH AKZO-NOBEL POLYURETHANE PAINT. THE VERTICAL BLUE BAR WILL BE LIGHTED INTERNALLY BY GE TETRA BRIGHT BLUE LED'S (SEE GE LAYOUT). THE FRONT, BACK AND LEFT END OF THE VERTICAL BLUE BAR WILL LIGHT AND WILL BE CONSTRUCTED OF CLEAR LEXAN WITH 90 DEGREE BENT EDGES. THE LEXAN BAR WILL HAVE TRANSLUCENT VINYL TO MATCH PMS 653 BLUE APPLIED FIRST SURFACE. THE SIGN WILL BE INSTALLED ON A SINGLE-STEEL POST WHICH WILL BE SET IN CONCRETE (SEE ATTACHED ENGINEERING). THE SIGN WILL MEET U. L. APPROVAL AND WILL BEAR THE REQUIRED LABELS. THE SIGN WILL HAVE A DECORATIVE STONE BASE WHICH WILL BE INCLUDED BY THE SIGN MANUFACTURER.

L. SIDE VIEW DETAIL

NOT TO SCALE



THE TOP AND BOTTOM OF  
THE VERTICAL BLUE BAR  
WILL BE ALUMINUM AND  
WILL HAVE A RETAINER TO  
HOLD THE LEXAN IN PLACE

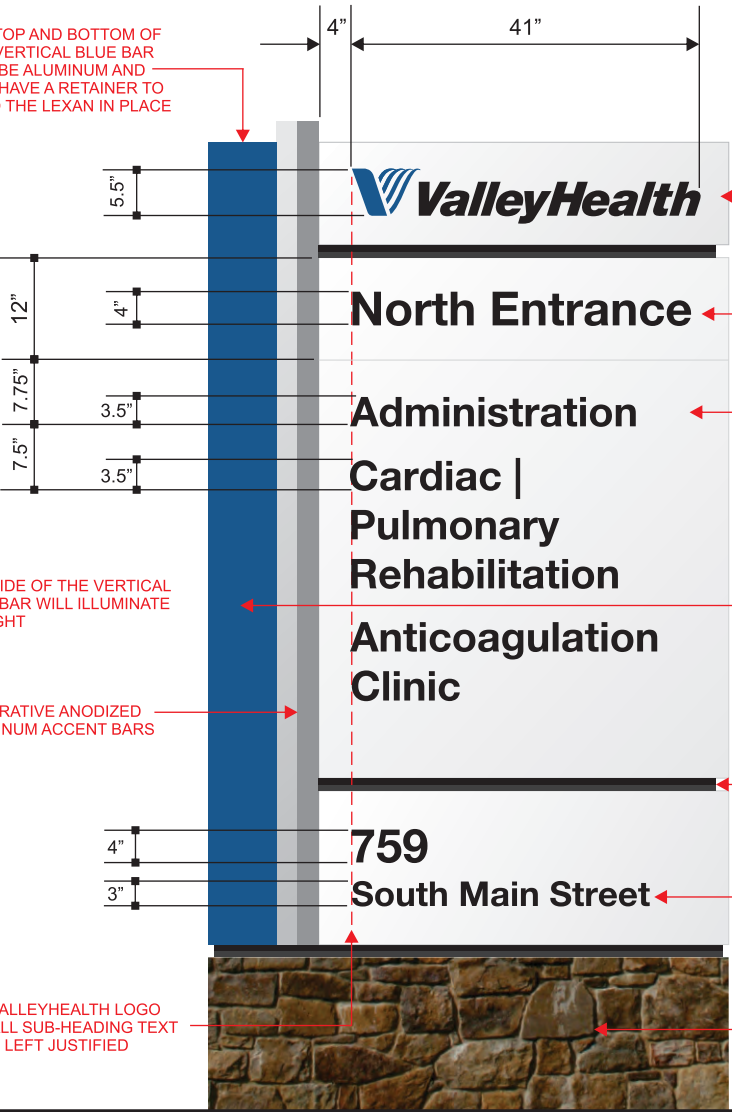
THE SIDE OF THE VERTICAL  
BLUE BAR WILL ILLUMINATE  
AT NIGHT

DECORATIVE ANODIZED  
ALUMINUM ACCENT BARS

THE VALLEYHEALTH LOGO  
AND ALL SUB-HEADING TEXT  
TO BE LEFT JUSTIFIED

SIDE A DETAIL

NOT TO SCALE



HEADER PANELS TO BE ALUMINUM WITH  
ROUTED LOGO & TEXT WITH PUSH THRU  
1/2" ACRYLIC. THE EDGES WILL BE CLEAR.  
THE LOGO WILL HAVE PMS 653 BLUE  
TRANSLUCENT VINYL APPLIED TO THE  
1ST SURFACE. THE TEXT WILL HAVE BLACK  
OPAQUE VINYL APPLIED 1ST SURFACE.

THIS HEADER IS A SEPARATE PANEL FROM  
THE PANEL BELOW IT.

SUB-HEADING TEXT PANEL TO BE ALUMINUM  
WITH ROUTED TEXT WITH PUSH THRU 1/2"  
ACRYLIC. THE EDGES WILL BE CLEAR. THE  
TEXT WILL HAVE BLACK OPAQUE VINYL  
APPLIED 1ST SURFACE. THIS FACE WILL BE  
A ONE PIECE FACE WITH NO SEAMS.

THE VERTICAL BLUE BAR WILL BE FLAT LEXAN  
WITH 90 DEGREE BENDS ON THE EDGES. THE  
VERTICAL BAR WILL HAVE TRANSLUCENT VINYL  
APPLIED FIRST SURFACE TO MATCH PMS 653  
BLUE. THE VERTICAL BAR WILL BE ILLUMINATED  
INTERNALLY BY BRIGHT BLUE GE LED LIGHTING.  
THE FRONT, LEFT SIDE AND BACK WILL LIGHT AT  
NIGHT.

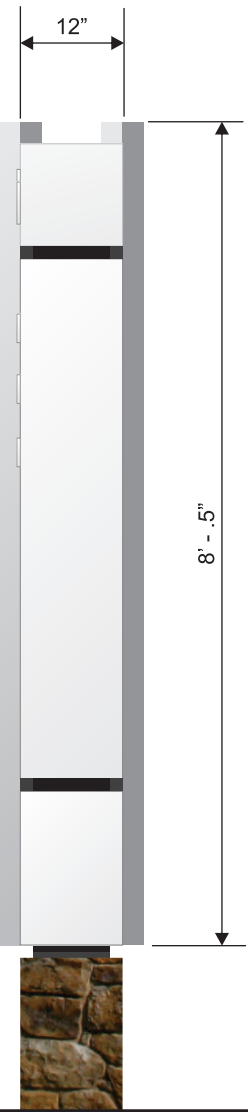
INSET ALUMINUM REVEALS

THE LOWER PANEL WILL BE FLAT ALUMINUM  
AND WILL NOT BE ILLUMINATED WITH LED'S.  
THIS FACE WILL BE A ONE PIECE FACE WITH  
NO SEAMS. THE ADDRESS WILL BE OPAQUE  
BLACK VINYL APPLIED FIRST SURFACE.

THE STONE USED IN THE BASE WILL MATCH THE  
STONE USED IN THE NEW ED/MOB BUILDING.

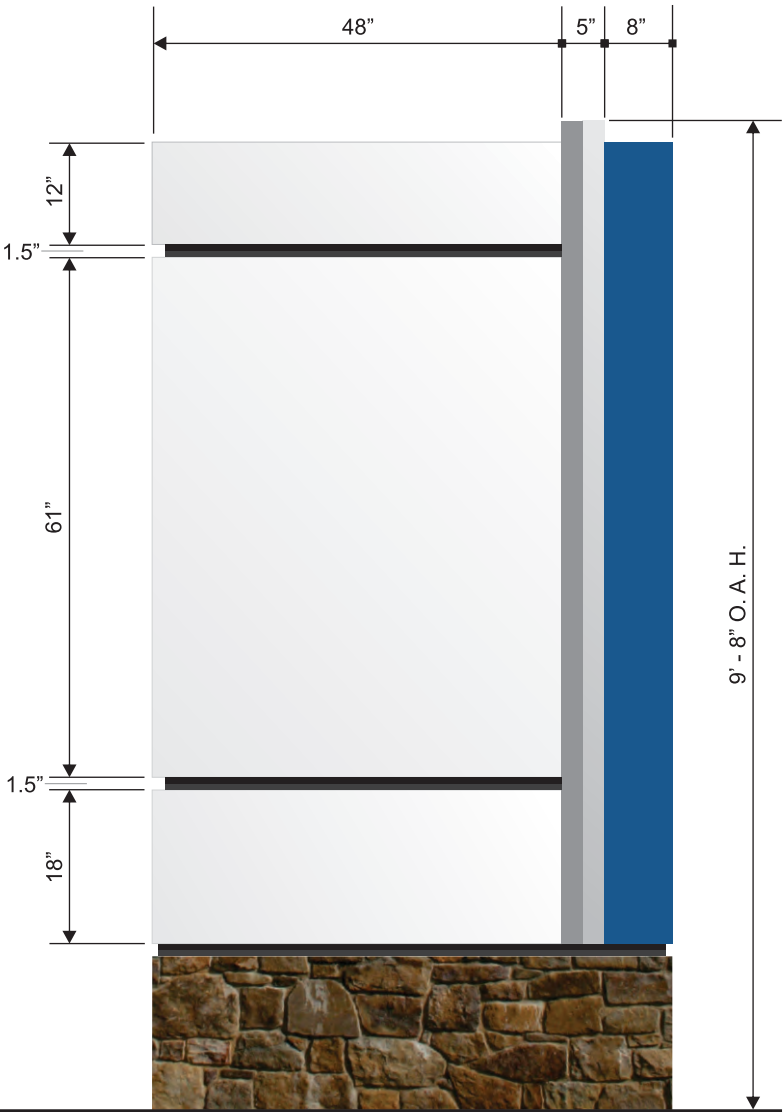
R. SIDE VIEW DETAIL

NOT TO SCALE



SIDE B DETAIL

NOT TO SCALE



a company you can identify with

DATE

JANUARY 14TH, 2016

SCALE

AS INDICATED

CLIENT

VALLEY HEALTH

PROJECT

SMH CAMPUS SIGNAGE

LOCATION

WOODSTOCK, VA

DRAWING #

VH.SMH.SIGNX.11



Identity America, Inc.

Professional Building  
112 Spruce St. Spruce 4  
Bluefield, VA 24605

Phone: 276.322.2616

Fax: 276.322.1637

identityamerica.com

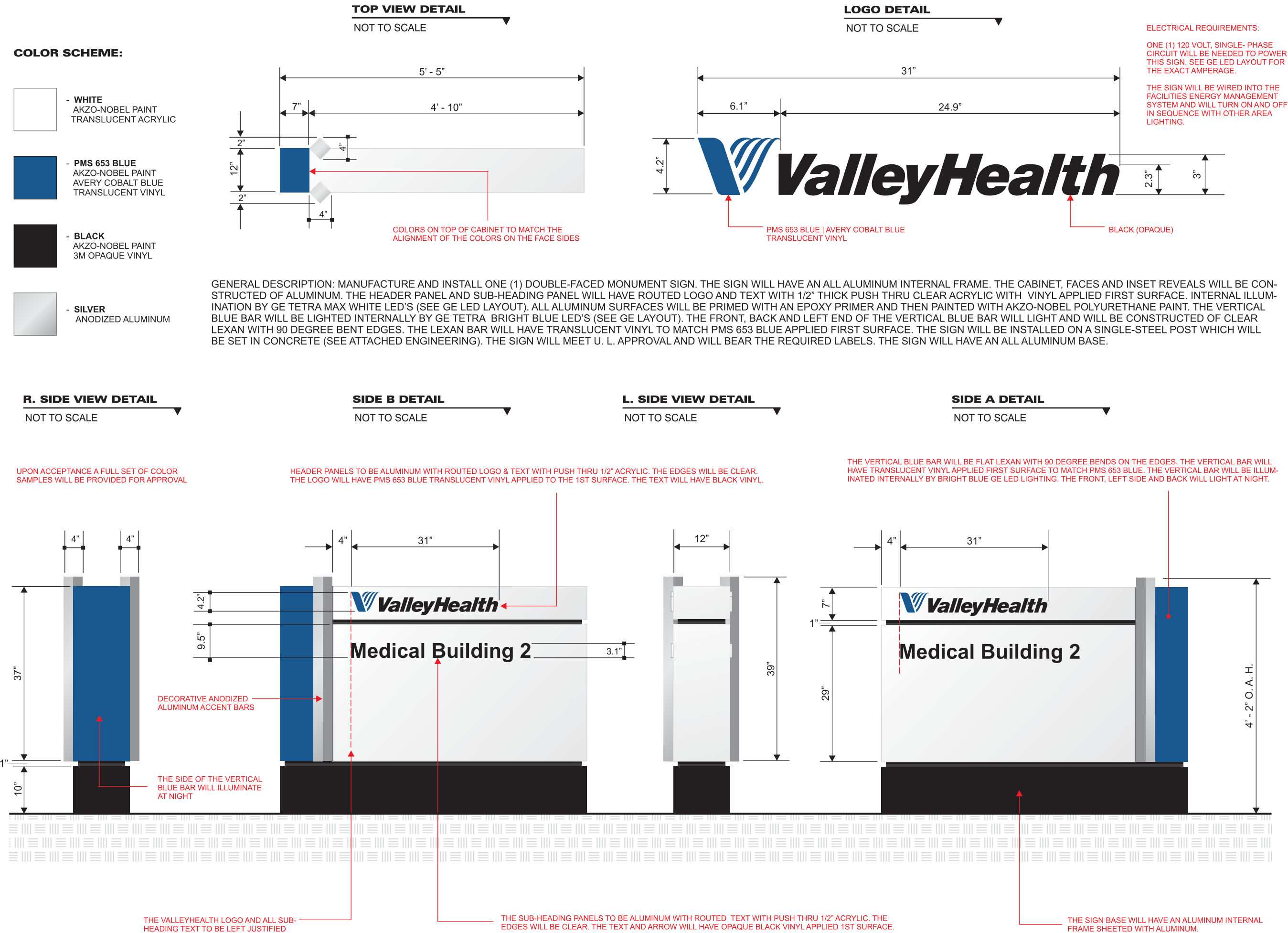




COLOR SCHEME:

- WHITE  
AKZO-NOBEL PAINT  
TRANSLUCENT ACRYLIC
- PMS 653 BLUE  
AKZO-NOBEL PAINT  
AVERY COBALT BLUE  
TRANSLUCENT VINYL
- BLACK  
AKZO-NOBEL PAINT  
3M OPAQUE VINYL
- SILVER  
ANODIZED ALUMINUM

GENERAL DESCRIPTION: MANUFACTURE AND INSTALL ONE (1) DOUBLE-FACED MONUMENT SIGN. THE SIGN WILL HAVE AN ALL ALUMINUM INTERNAL FRAME. THE CABINET, FACES AND INSET REVEALS WILL BE CONSTRUCTED OF ALUMINUM. THE HEADER PANEL AND SUB-HEADING PANEL WILL HAVE ROUTED LOGO AND TEXT WITH 1/2" THICK PUSH THRU CLEAR ACRYLIC WITH VINYL APPLIED FIRST SURFACE. INTERNAL ILLUMINATION BY GE TETRA MAX WHITE LED'S (SEE GE LED LAYOUT). ALL ALUMINUM SURFACES WILL BE PRIMED WITH AN EPOXY PRIMER AND THEN PAINTED WITH AKZO-NOBEL POLYURETHANE PAINT. THE VERTICAL BLUE BAR WILL BE LIGHTED INTERNALLY BY GE TETRA BRIGHT BLUE LED'S (SEE GE LAYOUT). THE FRONT, BACK AND LEFT END OF THE VERTICAL BLUE BAR WILL BE CONSTRUCTED OF CLEAR LEXAN WITH 90 DEGREE BENT EDGES. THE LEXAN BAR WILL HAVE TRANSLUCENT VINYL TO MATCH PMS 653 BLUE APPLIED FIRST SURFACE. THE SIGN WILL BE INSTALLED ON A SINGLE-STEEL POST WHICH WILL BE SET IN CONCRETE (SEE ATTACHED ENGINEERING). THE SIGN WILL MEET U. L. APPROVAL AND WILL BEAR THE REQUIRED LABELS. THE SIGN WILL HAVE AN ALL ALUMINUM BASE.



a company you can identify with

DATE

JANUARY 18TH, 2016

SCALE

AS INDICATED

CLIENT

VALLEY HEALTH

PROJECT

SMH CAMPUS SIGNAGE

LOCATION

WOODSTOCK, VA

DRAWING #

VH.SMH.SIGNZ.13



Identity America, Inc.

Professional Building  
112 Spruce St. Spruce 4  
Bluefield, VA 24605

Phone: 276.322.2616  
Fax: 276.322.1637

identityamerica.com