

- MULTI LEVEL ARCHITECTURAL SIGNS
- ALL ALUMINUM INTERNAL STRUCTURES
- ALL ALUMINUM MAIN BODY & ENDS
- ALL ALUMINUM SECOND LEVEL
- PRIMED WITH AN EPOXY PRIMER
- FINISHED WITH POLYURETHANE PAINT

- ROUTED COPY AND LOGO
- 1/2" CLEAR ACRYLIC PUSH THRU COPY
- PREMIUM 3M TRANS. VINYL GRAPHICS
- GE TETRA INTERNAL LED LIGHTING
- GE TETRA LED LIGHTING HALO GLOW
- COMPLETE U. L. APPROVAL

- ALL ALUMINUM INSET REVEALS
- CHANGEABLE DIRECTIONAL PANELS
- ENGINEERED SUPPORT STRUCTURE
- FULLY ENGINEERED CONCRETE FOOTERS
- STONE BASE MATCHED TO FACILITY
- PRODUCTION DRAWINGS UPON APPROVAL

- STATE OF THE ART MANUFACTURING
- FULLY LICENSED & INSURED INSTALLATION
- COMPLETE PROJECT MANAGEMENT
- COORDINATION WITH GENERAL CONTRACTOR
- ONE YEAR WARRANTY ON SIGNS
- FIVE YEAR WARRANTY ON GE COMPONENTS

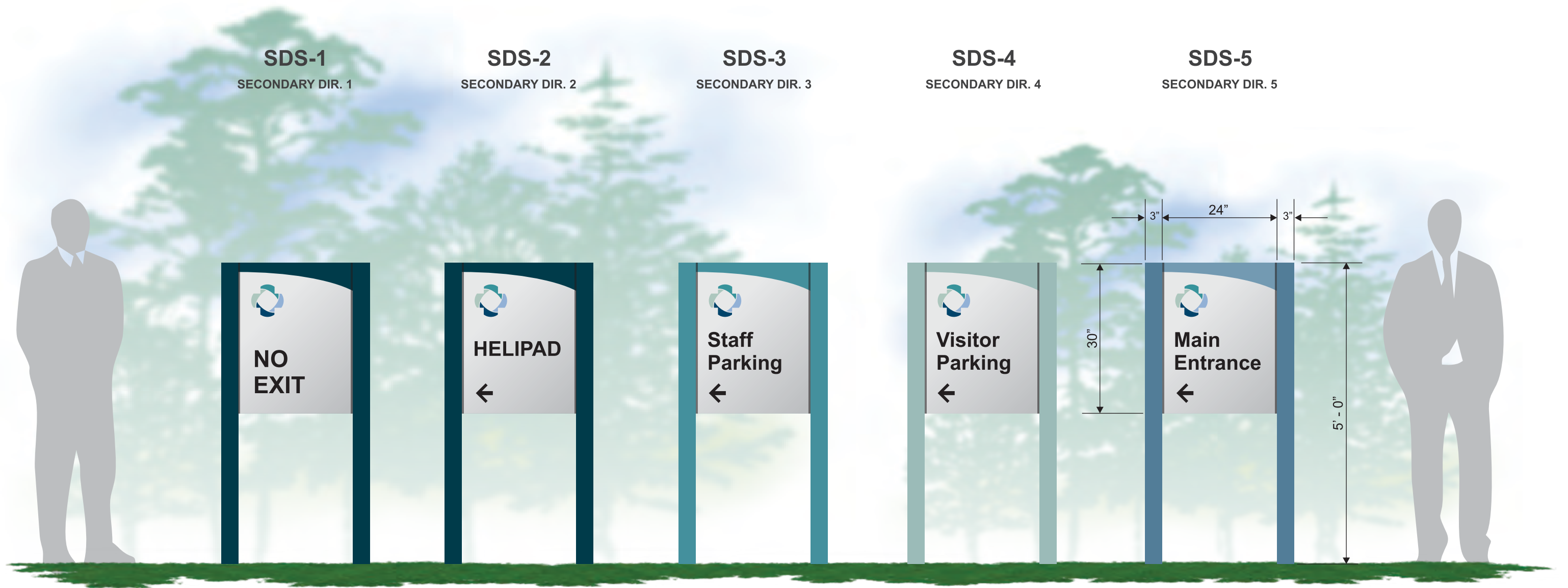


- NON ILLUMINATED DIRECTIONAL SIGNS
- ALL ALUMINUM EXTRUSION CONSTRUCTION
- POST AND PANEL SIGN SYSTEM
- ENGINEER GRADE CONSTRUCTION
- PRIMED WITH AN EPOXY PRIMER
- FINISHED WITH POLYURETHANE PAINT

- PMS COLOR MATCH PAINTED LOGOS
- 3/4" THICK MAIN BODY OF SIGN
- 3M REFLECTIVE VINYL COPY
- EXTRUSION CAPS TO FINISH POSTS
- FACES PAINTED BRIGHT SILVER
- TOP PAINTED TO MATCH PMS COLORS

- POSTS PAINTED TO MATCH PMS COLORS
- ENGINEERED MAIN BODY OF SIGNS
- ENGINEERED EXTRUSION POSTS
- FULLY ENGINEERED CONCRETE FOOTERS
- SEE SITE PLAN FOR SIGN PLACEMENT
- PRODUCTION DRAWINGS UPON APPROVAL

- STATE OF THE ART MANUFACTURING
- FULLY LICENSED & INSURED INSTALLATION
- COMPLETE PROJECT MANAGEMENT
- COORDINATION WITH GENERAL CONTRACTOR
- ONE YEAR WARRANTY ON SIGNS
- EIGHT YEAR WARRANTY ON 3M VINYL



- NON ILLUMINATED DIRECTIONAL SIGNS
- ALL ALUMINUM EXTRUSION CONSTRUCTION
- POST AND PANEL SIGN SYSTEM
- ENGINEER GRADE CONSTRUCTION
- PRIMED WITH AN EPOXY PRIMER
- FINISHED WITH POLYURETHANE PAINT

- PMS COLOR MATCH PAINTED LOGOS
- 3/4" THICK MAIN BODY OF SIGN
- 3M REFLECTIVE VINYL COPY
- EXTRUSION CAPS TO FINISH POSTS
- FACES PAINTED BRIGHT SILVER
- TOP PAINTED TO MATCH PMS COLORS

- POSTS PAINTED TO MATCH PMS COLORS
- ENGINEERED MAIN BODY OF SIGNS
- ENGINEERED EXTRUSION POSTS
- FULLY ENGINEERED CONCRETE FOOTERS
- SEE SITE PLAN FOR SIGN PLACEMENT
- PRODUCTION DRAWINGS UPON APPROVAL

- STATE OF THE ART MANUFACTURING
- FULLY LICENSED & INSURED INSTALLATION
- COMPLETE PROJECT MANAGEMENT
- COORDINATION WITH GENERAL CONTRACTOR
- ONE YEAR WARRANTY ON SIGNS
- EIGHT YEAR WARRANTY ON 3M VINYL

**FRONT VIEW DETAIL**

NOT TO SCALE



**EXTERIOR SIGN STANDARDS**



**GENERAL DESCRIPTION:**

MANUFACTURE AND INSTALL ONE SET OF REVERSE CHANNEL LED ILLUMINATED LETTERS AND LOGO. THE LETTERS AND LOGO WILL BE FABRICATED AND WILL HAVE ALUMINUM FACES AND RETURNS. THE BACKS OF THE LETTERS WILL BE CLEAR POLYCARBONATE. THE LETTERS WILL BE LIGHTED WITH GE TETRA MINIMAX BRIGHT WHITE LED LIGHTING SYSTEM AND WILL CAST A HALO GLOW BEHIND THE LETTERS AND LOGO. THE LOGO WILL HAVE AN ALUMINUM BACKER PANEL TO ENHANCE THE ELEMENTS OF THE LOGO.

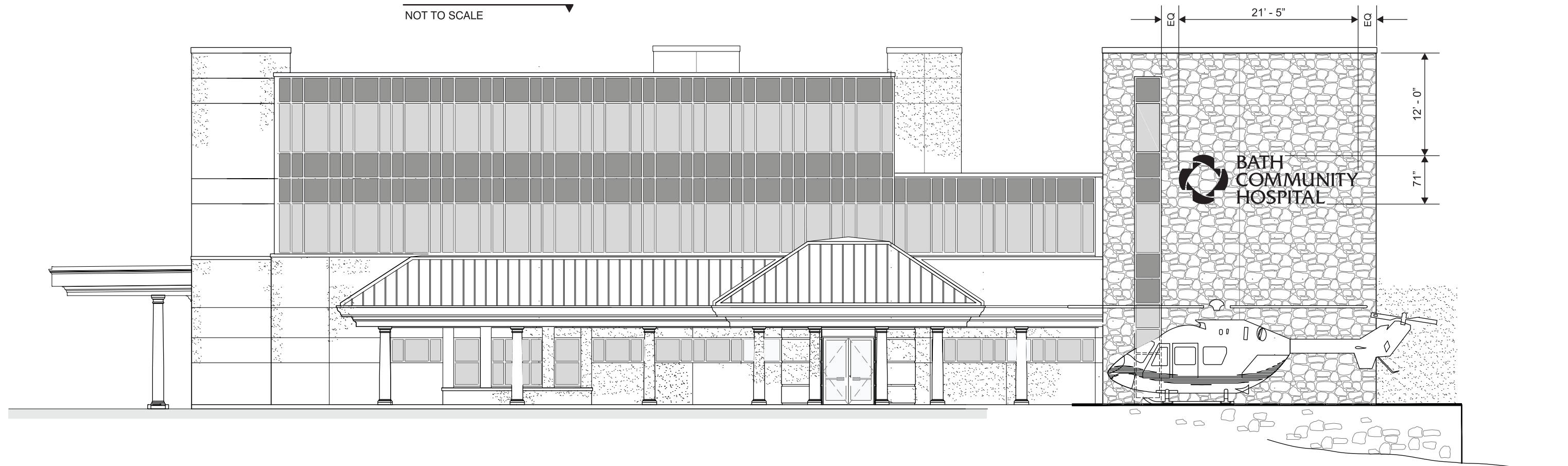
THE LETTERS WILL MEET U. L. APPROVAL AND ALL WIRING WILL MEET THE STANDARDS AS SET FORTH BY THE N. E. C. ALL SECONDARY WIRING AND THE POWER SUPPLIES WILL BE BEHIND THE WALL INSIDE OF THE BUILDING (OUT OF VIEW FROM BOTH OUTSIDE AND INSIDE).

**ELECTRICAL REQUIREMENTS:**

THE LETTERS AND LOGO WILL REQUIRE ONE (1) 120 VOLT, 20 AMP SINGLE-PHASE ELECTRICAL CIRCUIT. THE LETTERS & LOGO WILL BE WIRED INTO THE HOSPITAL'S ENERGY MANAGEMENT SYSTEM AND WILL TURN ON AND OFF IN CORRELATION WITH OTHER AREA LIGHTING. CUSTOMER TO PROVIDE THE PROPER ELECTRICAL CIRCUIT BEHIND THE WALL WHERE INDICATED.

**NORTH ELEVATION**

NOT TO SCALE

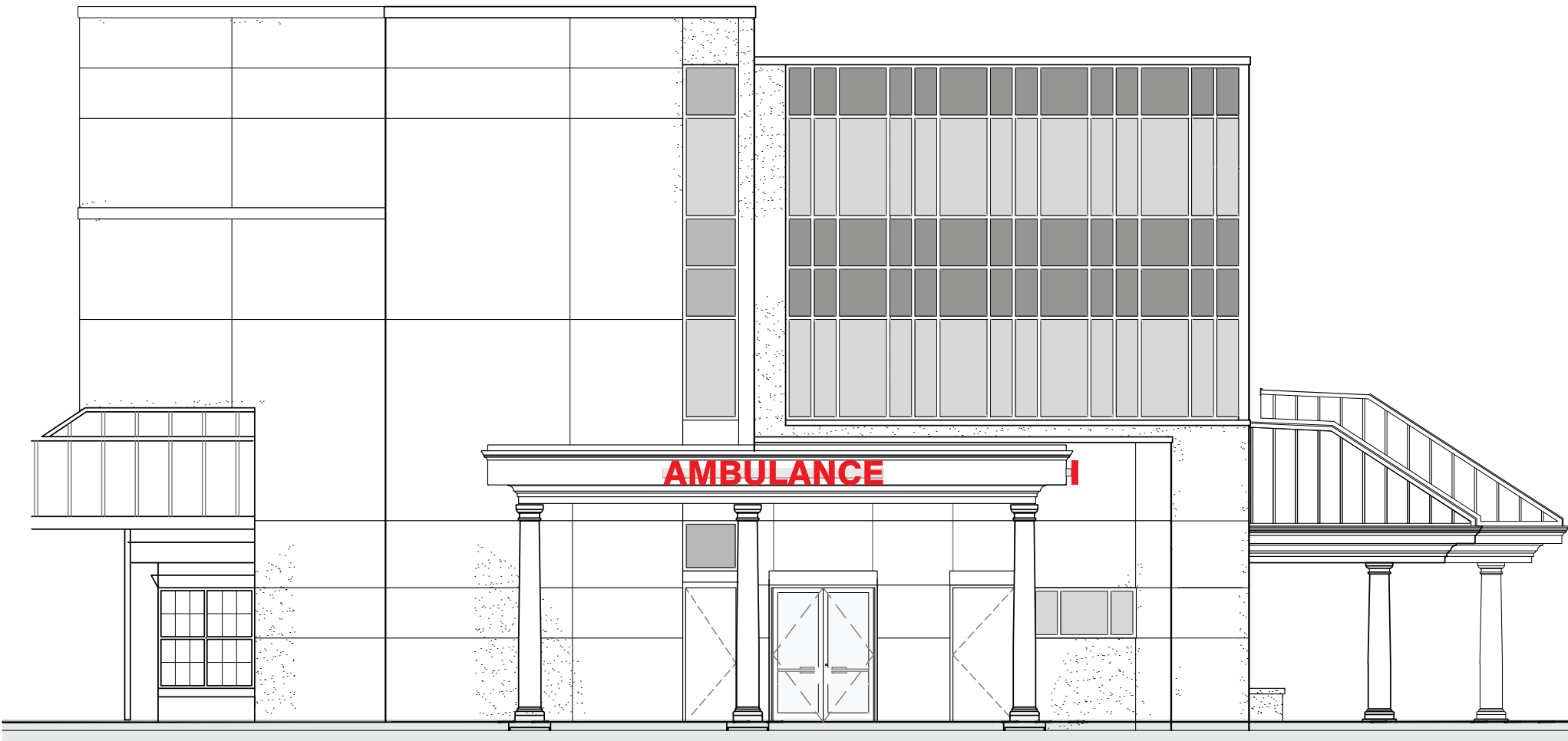


**PARTIAL ELEVATION**

NOT TO SCALE



**EXTERIOR SIGN STANDARDS**



**GENERAL NOTES:**

THE CHANNEL LETTERS WILL BE PLACED ON THE TWO SIDES OF THE CANOPY AND WILL BE POSITIONED AS FOLLOWS. THE LETTERS WILL BE CENTERED BOTH HORIZONTALLY AND VERTICALLY ON THE SIGN BAND AS SHOWN.

**ELECTRICAL REQUIREMENTS:**

ONE (1) 120 VOLT, 20 AMP SINGLE-PHASE ELECTRICAL CIRCUIT WILL BE REQUIRED TO POWER ALL THREE SETS OF CHANNEL LETTERS. THE LETTERS WILL BE WIRED INTO THE HOSPITAL'S ENERGY MANAGEMENT SYSTEM AND WILL TURN ON AND OFF IN CORRELATION WITH OTHER AREA LIGHTING AS REQUIRED.

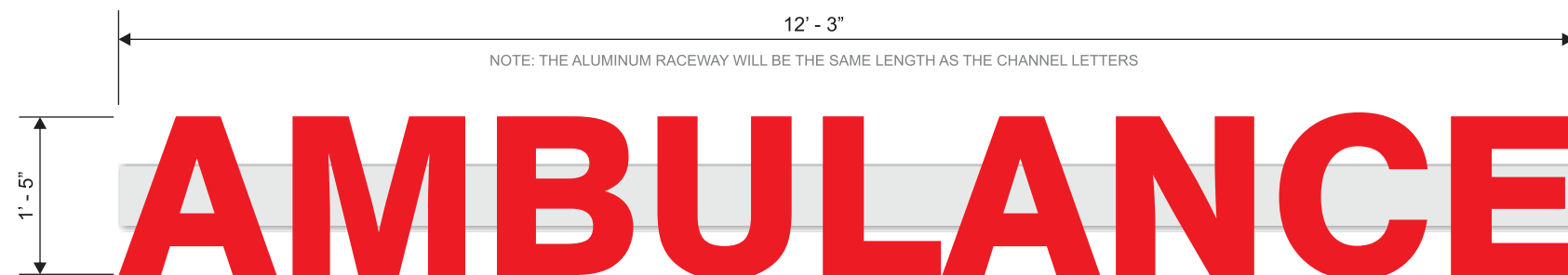
**PERMITTING & LICENSING:**

IDENTITY AMERICA, INC. WILL OBTAIN ALL NECESSARY PERMITS AND LICENSES FROM ALL JURISDICTIONS AS REQUIRED AND WILL MAINTAIN SUCH FOR THE DURATION OF THE PROJECT.

GENERAL NOTE: THE ABOVE ELEVATION SHOWS HOW THE CHANNEL LETTERS WILL APPEAR ON THE EAST ELEVATION. THERE WILL BE TWO (2) SETS OF LETTERS (FRONT & R. SIDE).

**FRONT VIEW DETAIL**

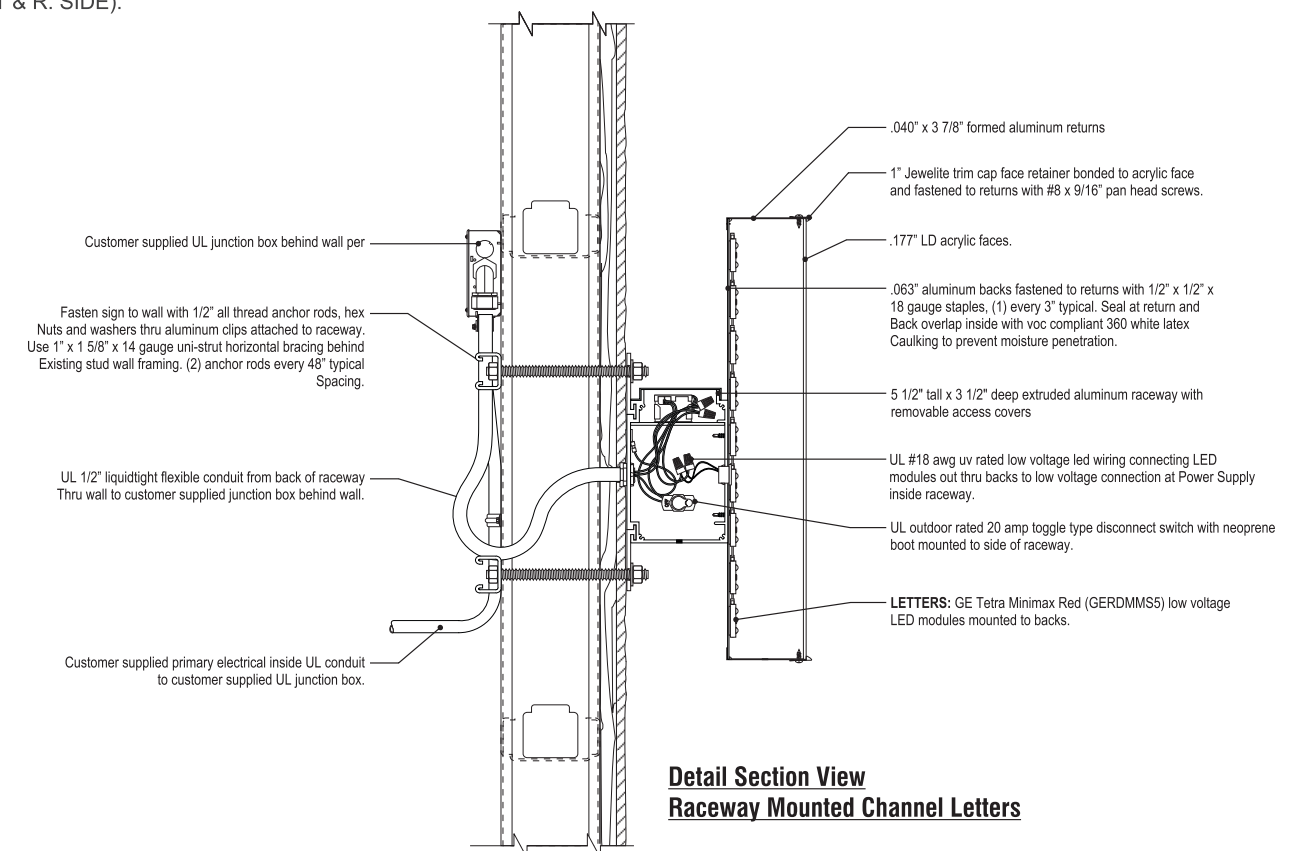
NOT TO SCALE



NOTE: THE ALUMINUM RACEWAY WILL BE THE SAME LENGTH AS THE CHANNEL LETTERS

GENERAL DESCRIPTION: MANUFACTURE AND INSTALL TWO (2) SETS OF ILLUMINATED "AMBULANCE" CHANNEL LETTERS. THE LETTERS WILL HAVE RED TRANSLUCENT PRE-PIGMENTED ACRYLIC FACES. THE FACE PERIMETERS WILL BE BORDERED WITH TRIM CAP. THE RETURNS AND BACKS OF THE LETTERS WILL BE CONSTRUCTED OF ALUMINUM. THE LETTERS WILL BE LIGHTED INTERNALLY WITH GE TETRA MINIMAX BRIGHT RED LED LIGHTING SYSTEM. THE LETTERS WILL BE MOUNTED ON ALUMINUM RACEWAYS WHICH WILL CONTAIN ALL POWER SUPPLIES AND ALL SECONDARY WIRING BETWEEN LETTERS. THE RACEWAY WILL BE PAINTED TO MATCH THE COLOR OF THE SIGN BAND ON THE CANOPY.

THE LETTERS WILL MEET U. L. APPROVAL AND ALL WIRING WILL MEET THE GUIDELINES AS SET FORTH BY THE N. E. C. THE CUSTOMER WILL PROVIDED THE PROPER ELECTRICAL CIRCUIT AS NOTED. THE PRIMARY CIRCUITS WILL BE RAN TO JUNCTION BOXES PLACED ON THE BACK SIDE OF THE CANOPY FACADES ON THE FRONT AND RIGHT SIDE AS NOTED.



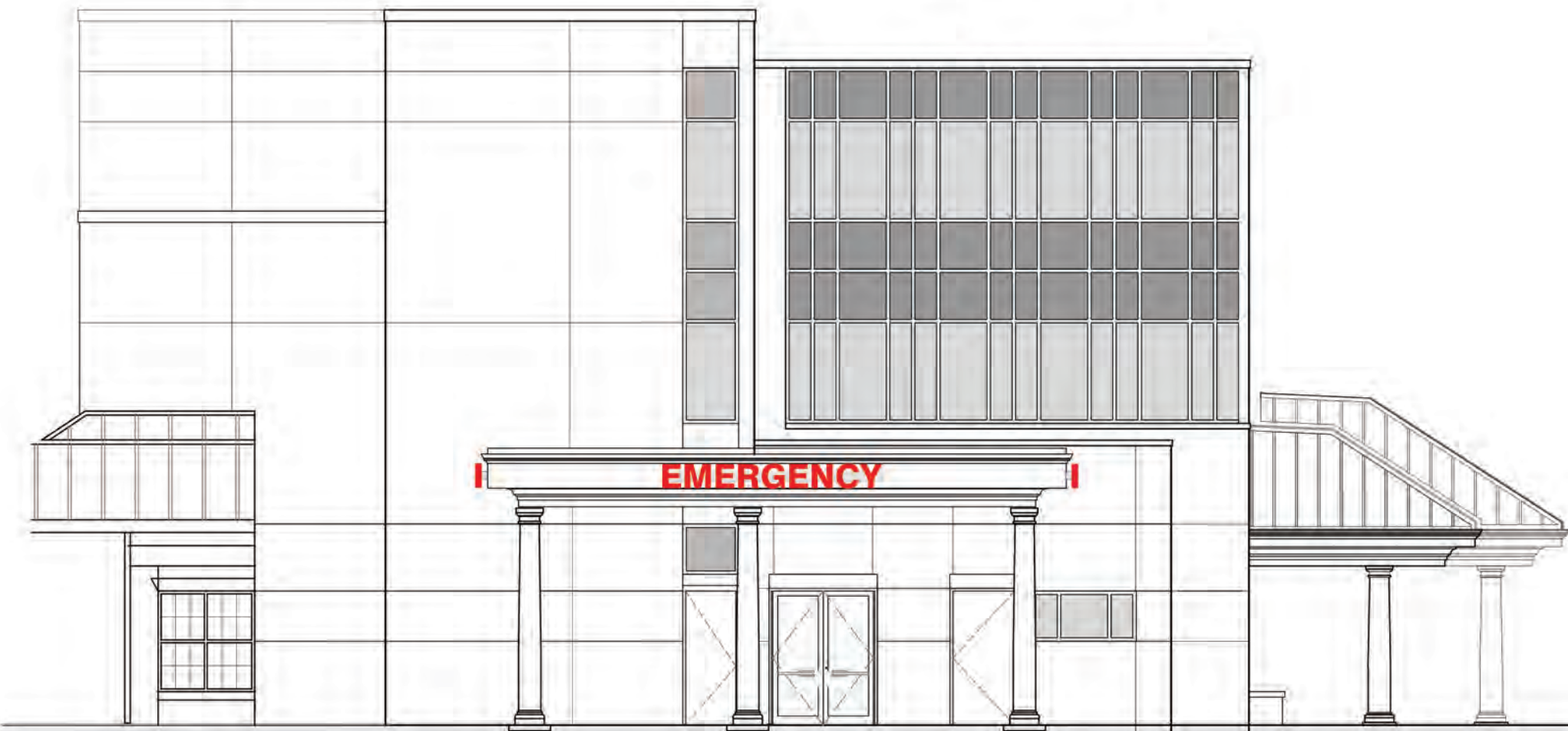
**Detail Section View  
Raceway Mounted Channel Letters**

**PARTIAL ELEVATION**

NOT TO SCALE



**EXTERIOR SIGN STANDARDS**



**GENERAL NOTES:**

THE CHANNEL LETTERS WILL BE PLACED ON THE THREE SIDES OF THE CANOPY AND WILL BE POSITIONED AS FOLLOWS. THE LETTERS WILL BE CENTERED BOTH HORIZONTALLY AND VERTICALLY ON THE SIGN BAND AS SHOWN.

**ELECTRICAL REQUIREMENTS:**

ONE (1) 120 VOLT, 20 AMP SINGLE-PHASE ELECTRICAL CIRCUIT WILL BE REQUIRED TO POWER ALL THREE SETS OF CHANNEL LETTERS. THE LETTERS WILL BE WIRED INTO THE HOSPITAL'S ENERGY MANAGEMENT SYSTEM AND WILL TURN ON AND OFF IN CORRELATION WITH OTHER AREA LIGHTING AS REQUIRED.

**PERMITTING & LICENSING:**

IDENTITY AMERICA, INC. WILL OBTAIN ALL NECESSARY PERMITS AND LICENSES FROM ALL JURISDICTIONS AS REQUIRED AND WILL MAINTAIN SUCH FOR THE DURATION OF THE PROJECT.

GENERAL NOTE: THE ABOVE ELEVATION SHOWS HOW THE CHANNEL LETTERS WILL APPEAR ON THE EAST ELEVATION. THERE WILL BE THREE (3) SETS OF LETTERS (ONE ON EACH SIDE).

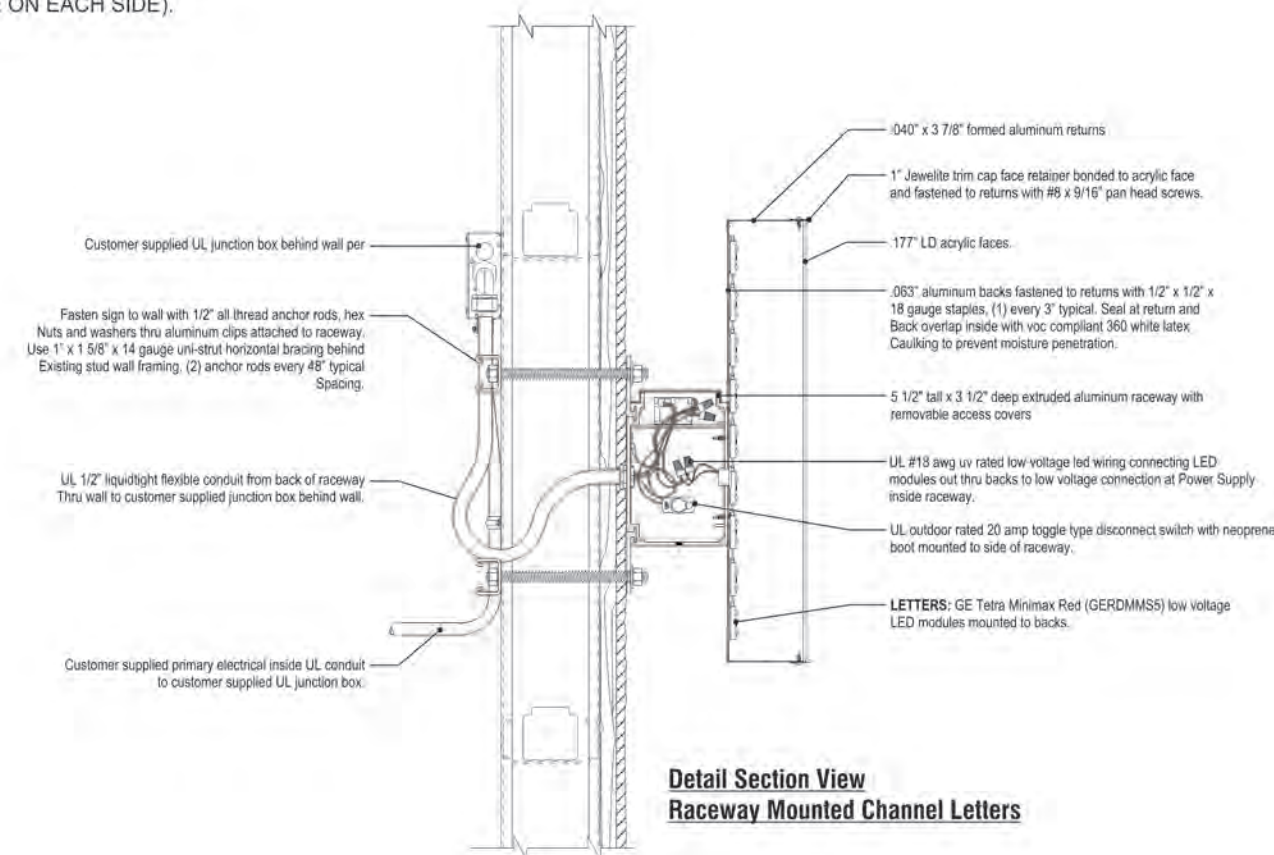
**FRONT VIEW DETAIL**

NOT TO SCALE



GENERAL DESCRIPTION: MANUFACTURE AND INSTALL THREE (3) SETS OF ILLUMINATED "EMERGENCY" CHANNEL LETTERS. THE LETTERS WILL HAVE RED TRANSLUCENT PRE-PIGMENTED ACRYLIC FACES. THE FACE PERIMETERS WILL BE BORDERED WITH TRIM CAP. THE RETURNS AND BACKS OF THE LETTERS WILL BE CONSTRUCTED OF ALUMINUM. THE LETTERS WILL BE LIGHTED INTERNALLY WITH GE TETRA MINIMAX BRIGHT RED LED LIGHTING SYSTEM. THE LETTERS WILL BE MOUNTED ON ALUMINUM RACEWAYS WHICH WILL CONTAIN ALL POWER SUPPLIES AND ALL SECONDARY WIRING BETWEEN LETTERS. THE RACEWAY WILL BE PAINTED TO MATCH THE COLOR OF THE SIGN BAND ON THE CANOPY.

THE LETTERS WILL MEET U. L. APPROVAL AND ALL WIRING WILL MEET THE GUIDELINES AS SET FORTH BY THE N. E. C. THE CUSTOMER WILL PROVIDED THE PROPER ELECTRICAL CIRCUIT AS NOTED. THE PRIMARY CIRCUITS WILL BE RAN TO JUNCTION BOXES PLACED ON THE BACK SIDE OF THE CANOPY FACADES ON ALL THREE SIDES AS NOTED.



**Detail Section View  
Raceway Mounted Channel Letters**